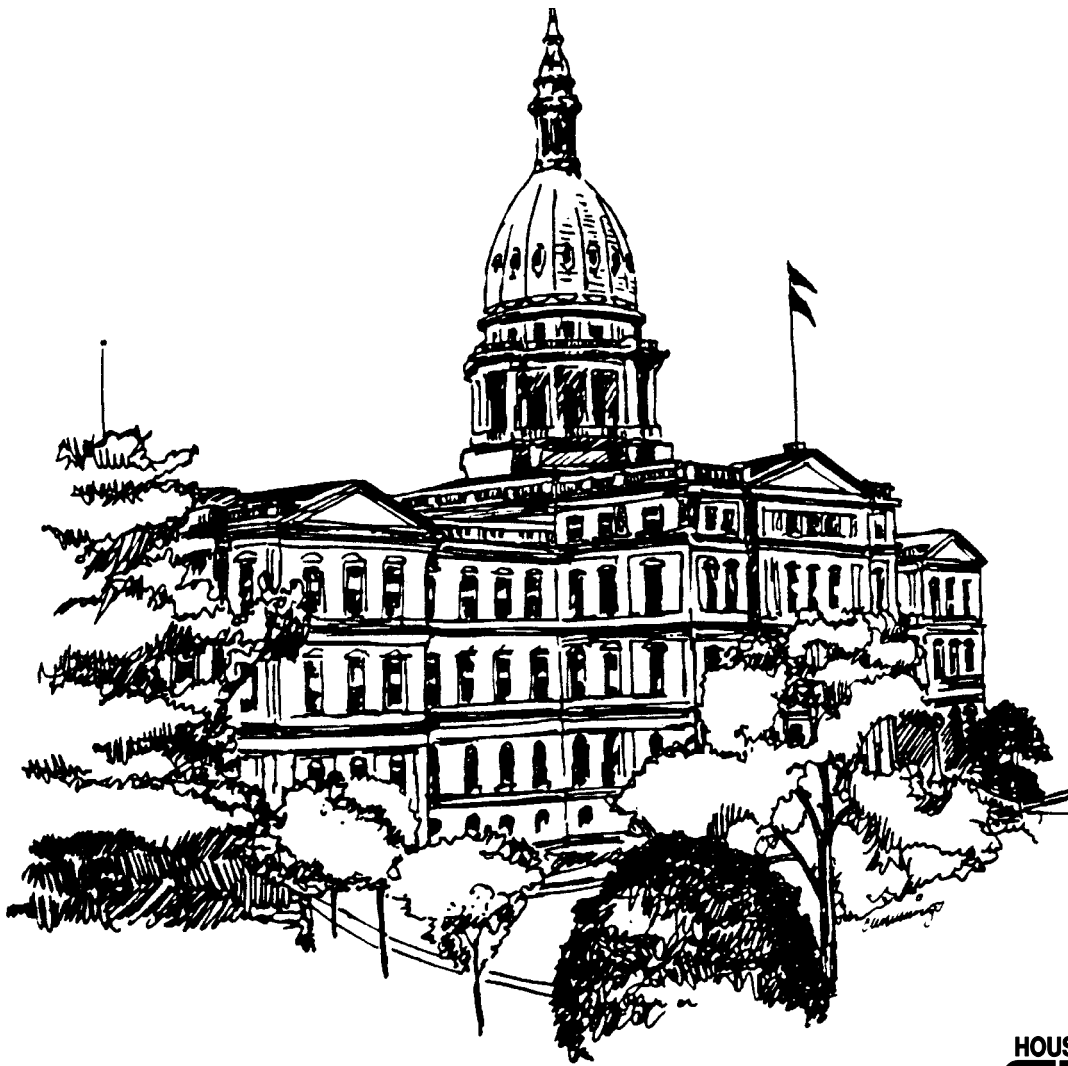


REVENUE SHARING PAYMENTS TO LOCAL GOVERNMENTS

FY 1999-2000 Actual
FY 2000-01 Estimated
FY 2001-02 Governor's Recommendation



HOUSE
FISCAL
AGENCY

Mitchell E. Bean, Director
June 2001

HOUSE FISCAL AGENCY GOVERNING COMMITTEE

Representatives:

Marc Shulman, Chair
Rick Johnson
Bruce Patterson

A. T. Frank, Vice Chair
Kwame Kilpatrick
Gilda Jacobs

MICHIGAN HOUSE OF REPRESENTATIVES APPROPRIATIONS COMMITTEE

Representatives:

Marc Shulman, Chair
Charles LaSata, Vice Chair
Cameron Brown
Sandra Caul
Patricia Godchaux
Mark Jansen
Ron Jelinek
Jerry Kooiman
David Mead
Mickey Mortimer
Gary Newell
John Pappageorge
Mike Pumford
Scott Shackleton
Tony Stamas

John Stewart
Laura Toy
Jerry Vander Roest
A. T. Frank, Minority Vice Chair
Richard Brown
Hansen Clarke
Patricia Lockwood
Steve Pestka
Clarence Phillips
James Plakas
Triette Reeves
Keith Stallworth
Michael Switalski
Gretchen Whitmer

STATE OF MICHIGAN
HOUSE OF REPRESENTATIVES



HOUSE FISCAL AGENCY

MITCHELL E. BEAN, DIRECTOR

P.O. BOX 30014
LANSING, MICHIGAN 48909-7514
PHONE: (517)373-8080 FAX: (517)373-5874
www.house.state.mi.us/hfa

GOVERNING COMMITTEE

MARC SHULMAN, CHAIR A. T. FRANK, V-C
RICK JOHNSON KWAME KILPATRICK
BRUCE PATTERSON GILDA JACOBS

August 24, 2001

TO: Members of the House of Representatives

FROM: Mitchell E. Bean, Director

REGARDING: Revenue Sharing Payments to Local Governments

This publication provides information on Michigan's revenue sharing payments made to local units. Statutory and constitutional appropriations for FYs 1999-2000, 2000-01, and 2001-02—under current law and based on current enacted estimates—are discussed in the **Overview**. In addition, historical background is provided for formula changes in revenue sharing payments since FY 1972-73.

Appendices A and B provide detail for revenue sharing special census payments (A) and general revenue sharing payments to local units (B). Estimates shown in this document are based on the May 2001 Consensus Revenue Estimating Conference agreement. Minor differences in these estimates from other estimates are attributable to rounding.

Jim Stansell, HFA Economist, provided the information presented in this report. Jeanne Dee, Administrative Assistant, prepared the report for publication.

I am available, as is Jim Stansell, to answer questions regarding revenue sharing payments. Please do not hesitate to call if we can be of further assistance.

Mitchell E. Bean, Director

TABLE OF CONTENTS

Overview	1
FY 1972-73 through FY 1997-98: Revenue Sharing Historical Overview	2
FY 1998-99 through FY 2001-02: Revenue Sharing Appropriations and Distribution Formulas	4
Appendix A: Revenue Sharing Special Census Payments	10
Appendix B: General Revenue Sharing Payments to Local Units	12

OVERVIEW

Revenue sharing payments are state funds appropriated to approximately 1,880 local units to spend as unrestricted revenue. Total revenue sharing appropriations for FY 1999-2000 and FY 2000-01, and the enacted estimate for FY 2001-02, are shown in Table 1.

In FY 1999-2000, \$1,462.2 million was distributed. In FY 2000-01, \$1,555.4 million was distributed, which represents an increase of \$93.2 million. In FY 2001-02, revenue sharing payments to cities, villages, and townships (CVTs) and counties will total \$1,577.8 million, based on the May 2001 consensus estimated sales tax collections and the subsequent enacted appropriation. Revenue sharing payments for FY 2001-02 were reduced by \$50.0 million from the full funding level, but are expected to increase by \$22.3 million, or 1.4%, from FY 2000-01.

Table 1
CONSTITUTIONAL AND STATUTORY REVENUE SHARING APPROPRIATIONS
(Millions of Dollars)

	Enacted Final FY 1999-2000	Enacted Final FY 2000-01	Enacted Estimate FY 2001-02	Change from FY 2000-01 to FY 2001-02	
				Amount	Percent
Constitutional Share	\$628.4	\$642.8	\$672.6	\$29.9	4.6%
Detroit	69.6	61.6	64.5	2.9	4.7%
Other CVTs	558.8	581.2	608.2	27.0	4.6%
Statutory Share	\$833.7	\$912.7	\$905.2	(\$7.5)	-0.8%
Counties	214.3	228.7	226.8	(1.9)	-0.8%
Detroit	264.3	272.3	269.4	(2.9)	-1.1%
Other CVTs	355.1	411.7	408.9	(2.8)	-0.7%
Totals	\$1,462.1	\$1,555.5	\$1,577.8	\$22.3	1.4%
Counties	214.3	228.7	226.8	(1.9)	-0.8%
Detroit	333.9	333.9	333.9	0.0	0.0%
Other CVTs	914.0	992.8	1,017.1	24.2	2.4%
Cities	558.3	577.8	585.8	8.0	1.4%
Villages	30.9	33.7	34.7	1.0	3.0%
Townships	324.7	381.3	396.6	15.3	4.0%

NOTE: Due to rounding, numbers may not add exactly.

In its most basic form, the revenue sharing process can be divided into two components: appropriation of funding and distribution of that funding. Appropriation of funding is based on both constitutional and statutory formulas. The Legislature may adjust statutory distribution formulas, but not constitutional formulas, to achieve a desired level of funding to local units of government. Actual distribution of the funding, as set forth in 1998 PA 532, tends to be more complex. Two major sections that follow contain an historical overview and a description of the formulas currently used to fund and to distribute revenue sharing payments.

FY 1972-73 THROUGH FY 1997-98: REVENUE SHARING HISTORICAL OVERVIEW

Revenue Sharing: FY 1972-73 — FY 1995-96

From the early 1970s through FY 1995-96, no substantial changes to the distribution formulas were made in Michigan's revenue sharing program. However, reductions from the statutory levels occurred in the 1990s, as discussed below.

Prior to FY 1996-97, revenue sharing sources included sales tax, income tax, single business tax, and intangibles tax revenue. Sales tax revenue was constitutionally earmarked to cities, villages, and townships (CVTs), while the other sources were statutorily earmarked to all local units. Of the total revenue sharing funds available, approximately 40% came from sales tax revenue, 35% from income tax revenue, and 25% from single business tax revenue. Intangibles tax revenue has not been paid since FY 1992-93.

Economic and state budget pressures in the early 1990s resulted in revenue sharing reductions from the statutory levels. These reductions, referred to as freeze lag reductions, began in FY 1990-91 and lasted through FY 1996-97 as depicted in Table 2. The reductions in FY 1998-99 and FY 1999-2000 (discussed later in this document) are a result of the appropriations cap in total revenue sharing payments.

Table 2
REVENUE SHARING REDUCTIONS FROM THE STATUTORY LEVEL
FY 1990-91 through FY 2001-02
(Millions of Dollars)

FY 1990-91	\$10.7
FY 1991-92	\$112.2 **
FY 1992-93	\$45.5
FY 1993-94	\$54.5
FY 1994-95	\$67.0
FY 1995-96	\$81.3
FY 1996-97	\$84.6
FY 1997-98	\$0.0
FY 1998-99	\$23.6
FY 1999-2000	\$58.6
FY 2000-01	\$0.0
FY 2001-02*	\$50.0

**Consensus estimates based on enacted appropriations.*

***Due to different fiscal year periods (state vs local), this was a state, but not a local, reduction. As a result of forward funding, \$112.2 was shifted into the state's next fiscal year, but was postponed for local units.*

Three distribution methods were used to distribute revenue sharing payments to local units: per capita, relative tax effort (RTE), and inventory reimbursement.

PER CAPITA FORMULA was based purely on population.

RELATIVE TAX EFFORT (RTE) FORMULA was based on the amount of revenue each local unit raised compared to the statewide average. This approach was based on the concept that local governments which impose the highest tax burdens need the most assistance to meet their spending needs.

INVENTORY REIMBURSEMENT FORMULA was based on each local unit's millage rate and the 1975 state equalized value of business inventory.

These three distribution formulas were used to make revenue sharing payments to CVTs, while the counties received payments through the per capita formula and the inventory reimbursement formula. Of the total revenue sharing dollars distributed, approximately 55% was disbursed under the per capita formula, 35% under the RTE formula, and 10% under the inventory reimbursement formula.

Revenue Sharing: FY 1996-97—FY 1997-98

A transition period occurred with Michigan's revenue sharing program in FY 1996-97 and FY 1997-98. The key components of this period are discussed below.

In FY 1996-97, the income tax, single business tax, and intangibles tax revenues were eliminated as statutory revenue sharing sources and were replaced with an additional 21.3% of sales tax revenue at the 4% rate. The statutory earmarking of sales tax revenue replaced the previous taxes at a rate that built in the continued statutory reductions. In addition to the statutory earmarking, 15% of the sales tax revenue at the 4% rate continued to be constitutionally earmarked. Beginning in FY 1996-97, the total amount for state revenue sharing payments was limited to the total amount appropriated for this purpose in the general government appropriations bills.

In FY 1997-98, minor distributional changes were implemented. The total distributed in FY 1997-98 under the RTE formula was capped at the FY 1996-97 level, with the growth above that level distributed on a per capita basis to CVTs.

Revenue Sharing: FY 1998-99 to Present

Beginning in FY 1998-99, local revenue sharing underwent significant changes in both the appropriation guidelines and the distribution mechanism. These changes were contained in 1998 PA 532; discussion of these changes follows.

FY 1998-99 THROUGH FY 2001-02: REVENUE SHARING APPROPRIATIONS AND DISTRIBUTION FORMULAS

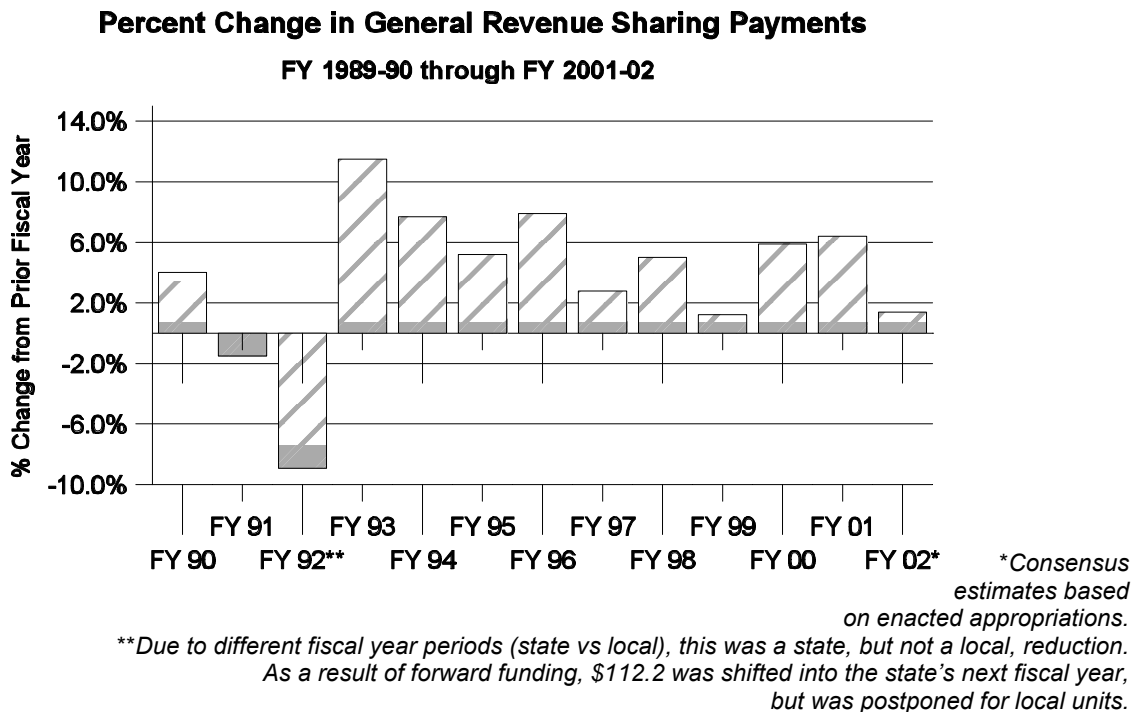
Revenue Sharing Sources/Appropriations

The sources of revenue sharing payments are a constitutional earmarking and a statutory earmarking of sales tax revenue, subject to the appropriations process. The constitutional earmark is 15% of sales tax revenue at a 4% rate, while the statutory earmark is 21.3% of sales tax revenue at a 4% rate.

During the budget process, however, the appropriation is set based on estimates for the next fiscal year. Thus, the actual total appropriation will differ from the sum of the final or actual constitutional earmark and the statutory earmark. As a result, the actual constitutional earmark will be paid first, and the difference between the total appropriation and the constitutional piece will be the statutory distribution.

Figure 1 depicts the percentage in general revenue sharing payments from FY 1989-90 through FY 2001-02. The average increase during this period is 3.7%.

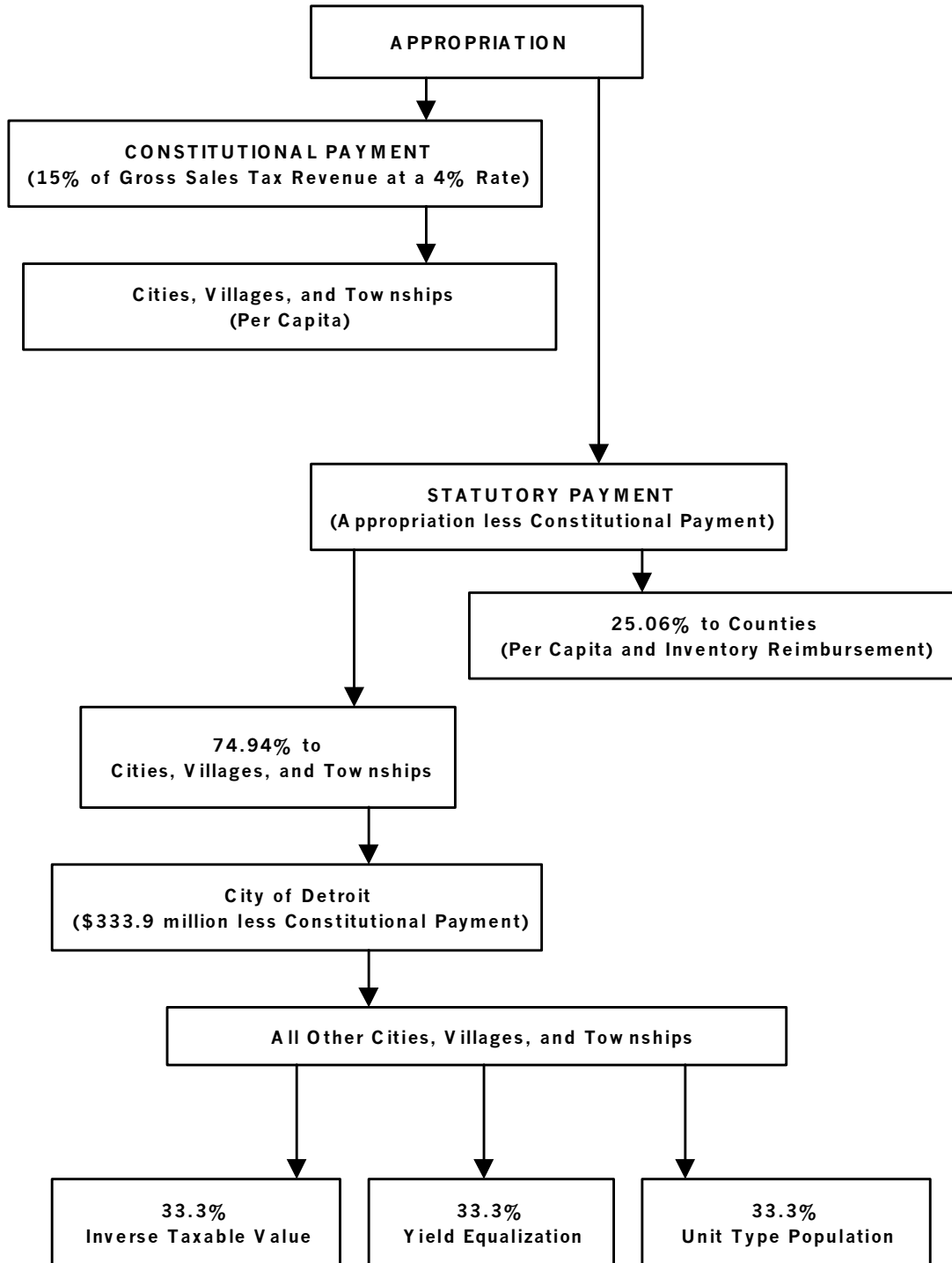
Figure 1



Revenue Sharing Distributions

Figure 2 is a flow chart of the distribution of revenue sharing appropriations when the new formulas contained in 1998 PA 532 are fully phased in. A more complete description follows.

**Figure 2
Revenue Sharing Distribution when 1998 PA 532 is Fully Phased In (FY 2006-07)**



Constitutional Distribution

PER CAPITA

The constitutional distribution is made to cities, villages, and townships on a per capita or a pure population basis.

Statutory Distribution

The statutory revenue sharing formulas, as specified in the State Revenue Sharing Act of 1971, as amended, sunset June 30, 2007.

COUNTIES

Counties receive 25.06% of the statutory distributions as specified in the appropriation. Approximately \$30.0 million is distributed under the inventory reimbursement formula described in the historical overview. The remaining amount, or over 85%, is distributed based entirely on population.

CITIES, VILLAGES, TOWNSHIPS (CVTs)

Cities, villages, and townships receive 74.94% of the statutory distributions. The City of Detroit is set, or frozen, at total revenue sharing payments of \$333.9 million until the sunset date (June 30, 2007). If sales tax revenue declines in a fiscal year, then the revenue sharing payment to the City of Detroit will decline by the same percent as the decline in sales tax revenue. The remainder of the statutory funding is phased in at a rate of 10% per fiscal year as indicated in Table 3. These formulas, used to distribute payments to all other CVTs, are described as follows.

Table 3

REVENUE SHARING STATUTORY FORMULA PHASE-IN SCHEDULE

	<u>FY 1999-2000</u>	<u>FY 2000-01</u>	<u>FY 2001-02</u>
<u>Old Formulas</u>			
FY 1997-98 Pro-rata Distribution	80%	70%	60%
<u>New Formulas: Each Weighted 1/3</u>			
1/3 Inverse Taxable Value			
1/3 Yield Equalization	20%	30%	40%
1/3 Unit Type Population Group			

INVERSE TAXABLE VALUE

This formula is the statewide taxable value per capita divided by each CVT's taxable value per capita. Local units with a relatively high taxable value per person receive lower inverse taxable value payments, while local units with a relatively low taxable value per person receive higher inverse taxable value payments.

YIELD EQUALIZATION

This method equalizes the return for each mill levied, up to a maximum of 20 mills. Local units with comparatively low taxable value per person receive yield equalization payments, while local units with comparatively high taxable value per person receive no yield equalization payments. Typically, about one-half of all CVTs receive yield equalization payments.

UNIT TYPE — POPULATION GROUP

Under this method of distribution, local unit populations are weighted according to the schedule in Table 4. Townships with populations greater than or equal to 20,000 are weighted as cities. Townships that provide certain fire, police, water, and sewer services and have a population between 10,000 and 20,000 are also weighted as cities. The higher the weight factor, the higher the payment; the lower the weight factor, the lower the payment.

Table 4
UNIT TYPE POPULATION WEIGHT FACTOR

<u>Population</u>	<u>Unit Type Factor</u>		
	<u>City</u>	<u>Village</u>	<u>Township</u>
0 - 5,000	2.50	1.50	1.00
5,001 - 10,000	3.00	1.80	1.20
10,001 - 20,000	3.60	2.16	1.44 / 3.60
20,001 - 40,000	4.32	2.16	4.32
40,001 - 80,000	5.18	2.16	5.18
80,001 - 160,000	6.22	2.16	6.22
160,001 - 320,000	7.46	2.16	7.46
320,001 - 640,000	8.96	2.16	8.96
Greater than 640,000	10.75	2.16	10.75

FY 1997-98 DISTRIBUTION

This formula is the pro-rata share for each CVT of the FY 1997-98 statutory distribution. This formula is being phased out at a rate of 10% per fiscal year.

EIGHT PERCENT CAP

The State Revenue Sharing Act of 1971, as amended, stipulates that the total revenue sharing payment to any city, village, or township (CVT) cannot increase by more than 8% of the total payment received in the preceding fiscal year. Local units that are subject to the 8% cap are eligible to participate in a process in which the funds in excess of the cap are redistributed to those CVTs that realized the smallest percentage gain to provide a floor, or minimum percentage change, in their total revenue sharing payments. The floor, which varies from year to year, is determined by the total appropriation and the amount of revenue sharing payments in excess of the 8% cap that is available for redistribution.

The 8% cap was applied to all CVTs in FY 1998-99 and in FY 1999-2000. However, beginning in FY 2000-01, if a CVT's population increase between the 1990 and the 2000 decennial census is at least 10%, then the 8% cap does not apply. Examination of official

2000 Census population figures reveals that almost one-half of the local units meet or exceed 10% population growth.

MULTIPLE COUNTY UNITS

There are 23 cities and villages in Michigan that overlap county lines; these are referred to as split units in Appendix B. Even though each of these units exists in more than one county, the Department of Treasury treats each one as a joint entity. For example, the city of Holland straddles both Allegan and Ottawa counties. For revenue sharing purposes, however, Holland is treated as a single city.

APPENDIX A

REVENUE SHARING SPECIAL CENSUS PAYMENTS

Special census payments are General Fund/General Purpose (GF/GP) appropriations to cities, villages, and townships that have significant population increases between the federal decennial census counts. These estimates are not included in the figures in Appendix B.

REVENUE SHARING SPECIAL CENSUS PAYMENTS

<u>County</u>	<u>City/Village/Township</u>	<u>Local Unit</u>	<u>1990 Population</u>	<u>Special Census Population</u>	<u>Actual FY 1998-99</u>	<u>Actual FY 1999-2000</u>
Allegan	Township	Gun Plain	4,754	5,503	\$44,423	46,435
Allegan	City	Wayland	2,751	3,240	45,989	50,602
Clare	Township	Freeman	613	824	16,022	16,374
Crawford	Township	Beaver Creek	1,175	1,409	14,196	14,769
Eaton	City	Pottersville	1,523	1,803	24,631	26,935
Genesee	Township	Argentine	4,651	5,849	75,525	79,149
Genesee	Township	Gaines	4,964	5,746	45,812	48,115
Grand Traverse	Township	East Bay	8,307	9,755	87,734	91,698
Grand Traverse	Township	Green Lake	3,677	4,492	50,256	52,520
Grand Traverse	Village	Kingsley	738	1,123	34,812	37,446
Grand Traverse	Township	Long Lake	5,977	7,390	89,949	94,235
Grand Traverse	Township	Paradise	1,770	2,097	19,796	20,707
Kalamazoo	Township	Prairie Ronde	1,365	1,925	36,964	38,530
Kalamazoo	Township	Texas	7,711	9,975	146,296	152,519
Kent	Township	Alpine	9,863	12,039	138,734	145,088
Kent	Township	Caledonia	5,369	6,289	57,564	59,743
Kent	Township	Cannon	7,928	9,910	131,417	136,838
Kent	Township	Courtland	3,950	4,931	64,896	67,639
Kent	Township	Gaines	14,533	17,256	173,894	182,454
Kent	Township	Oakfield	3,842	4,495	38,441	40,316
Kent	Township	Plainfield	24,946	28,750	234,505	247,790
Kent	City	Rockford	3,750	4,373	49,852	58,887
Lake	Township	Cherry Valley	248	368	7,896	8,272
Lake	Township	Elk	580	853	18,489	19,203
Lake	Township	Lake	700	982	18,897	19,624
Lake	Township	Yates	585	747	12,569	13,017
Leelanau	Township	Elmwood	3,427	3,959	31,241	32,464
Livingston	Township	Conway	1,818	2,404	39,972	41,665
Livingston	Township	Deerfield	3,000	3,649	40,996	42,731
Livingston	Township	Genoa	10,820	12,744	120,074	124,964
Livingston	Township	Green Oak	11,604	14,924	221,258	229,965
Livingston	Township	Hamburg	13,083	16,709	237,584	247,594
Livingston	Township	Handy	2,840	3,438	37,581	39,017
Livingston	Township	Hartland	6,860	8,387	97,684	101,484
Livingston	Township	Howell	4,294	4,969	42,606	43,950
Livingston	Township	Iosco	1,567	2,347	55,346	57,560
Livingston	Township	Marion	4,918	5,824	55,581	57,897
Livingston	Township	Tyrone	6,854	8,061	70,205	73,321
Macomb	Township	Lenox	3,069	4,359	\$90,140	\$93,211
Mecosta	Township	Morton	1,729	2,175	29,534	30,584
Montcalm	Township	Reynolds	1,677	2,202	34,903	36,420

REVENUE SHARING SPECIAL CENSUS PAYMENTS

<u>County</u>	<u>City/Village/Township</u>	<u>Local Unit</u>	<u>1990 Population</u>	<u>Special Census Population</u>	<u>Actual FY 1998-99</u>	<u>Actual FY 1999-2000</u>
Newaygo	Township	Ensley	1,984	2,376	25,719	26,945
Oakland	Township	Commerce	22,156	26,217	267,841	281,306
Oakland	Township	Independence	23,717	27,939	316,726	330,867
Oakland	City	Novi	32,998	40,533	622,470	663,514
Oakland	Township	Orion	21,019	24,627	255,148	266,611
Oakland	Township	Oxford	9,004	10,606	128,188	130,590
Oakland	City	South Lyon	6,479	7,805	125,412	135,462
Oakland	City	Wixom	8,550	11,495	256,451	314,904
Ottawa	Township	Allendale	8,022	9,512	96,256	101,823
Ottawa	Township	Grand Haven	9,710	11,622	140,727	145,487
Ottawa	Township	Holland	17,523	20,236	197,213	204,311
Ottawa	Township	Olive	2,866	3,742	64,691	67,036
Ottawa	Township	Park	13,541	15,937	154,335	160,605
Ottawa	Township	Port Sheldon	2,929	3,750	53,669	55,435
Ottawa	Township	Zeeland	4,472	5,786	104,596	108,014
Roscommon	Township	Markey	1,768	2,306	39,134	40,517
Roscommon	Village	Roscommon	858	1,067	18,285	20,919
Saginaw	Township	Tittabawassee	4,627	5,503	59,369	61,888
Washtenaw	Township	Pittsfield	17,650	23,469	513,561	531,677
Washtenaw	Township	Scio	9,578	11,072	91,089	93,814
Washtenaw	City	Saline	6,663	7,692	91,048	112,236
Wayne	Township	Canton	57,040	67,809	844,969	883,812
Wayne	Township	Northville	17,313	19,658	217,343	226,907
Wexford	Township	Cherry Grove	1,763	2,105	20,913	21,852
Wexford	Township	Haring	2,501	2,916	24,882	25,926
Total Payments					\$7,614,299	\$8,034,190
Number Certified					66	66

APPENDIX B

GENERAL REVENUE SHARING PAYMENTS TO LOCAL UNITS

GENERAL REVENUE SHARING PAYMENTS TO LOCAL UNITS

APPENDIX B

Local Unit		2000		FY 1999-2000	FY 2000-01 Year-to-Date		FY 2001-02 Year-to-Date	
Type	Name	Population	% Change	Enacted Final	Enacted Final	% Change	Enacted Estimate	% Change
Alcona County		11,703	15.47%	206,080	239,197	16.1%	236,969	-0.9%
Township	Alcona	1,089	20.20%	69,857	80,655	15.5%	83,878	4.0%
Township	Caledonia	1,203	21.88%	75,361	88,377	17.3%	92,030	4.1%
Township	Curtis	1,378	22.16%	95,812	111,691	16.6%	115,600	3.5%
Township	Greenbush	1,499	9.18%	102,995	110,751	7.5%	115,527	4.3%
Township	Gustin	668	0.30%	52,484	52,045	-0.8%	54,057	3.9%
Township	Harrisville	1,411	12.61%	91,020	103,066	13.2%	107,910	4.7%
Township	Hawes	967	13.10%	62,139	69,446	11.8%	72,614	4.6%
Township	Haynes	724	31.88%	40,793	52,405	28.5%	54,729	4.4%
Township	Mikado	1,043	22.42%	66,824	83,193	24.5%	86,955	4.5%
Township	Millen	463	11.03%	31,418	34,655	10.3%	36,148	4.3%
Township	Mitchell	396	36.55%	21,296	27,989	31.4%	29,210	4.4%
City	Harrisville	498	-4.60%	55,790	54,377	-2.5%	54,554	0.3%
Village	Lincoln	364	8.01%	32,277	33,170	2.8%	33,962	2.4%
Alger County		9,439	7.46%	189,407	204,122	7.8%	202,325	-0.9%
Township	Au Train	1,172	11.94%	88,111	96,135	9.1%	99,492	3.5%
Township	Burt	480	-5.51%	43,680	42,573	-2.5%	41,658	-2.1%
Township	Grand Island	45	114.29%	1,603	3,237	101.9%	3,388	4.7%
Township	Limestone	407	21.86%	24,603	30,689	24.7%	32,136	4.7%
Township	Mathias	571	1.42%	43,496	45,666	5.0%	47,676	4.4%
Township	Munising	2,707	34.54%	149,393	207,942	39.2%	218,044	4.9%
Township	Onota	310	27.05%	21,736	25,535	17.5%	26,280	2.9%
Township	Rock River	982	-2.87%	77,827	78,561	0.9%	82,228	4.7%
City	Munising	2,534	-8.72%	374,702	365,210	-2.5%	363,613	-0.4%
Village	Chatham	231	-13.81%	26,223	25,559	-2.5%	25,423	-0.5%
Allegan County		105,580	17.03%	2,048,951	2,371,649	15.7%	2,351,545	-0.8%
Township	Allegan	4,050	1.86%	310,674	331,962	6.9%	345,905	4.2%
Township	Casco	3,019	5.71%	244,202	252,988	3.6%	261,325	3.3%
Township	Cheshire	2,335	18.71%	156,394	196,325	25.5%	205,042	4.4%
Township	Clyde	2,104	5.15%	167,416	180,809	8.0%	191,900	6.1%
Township	Dorr	6,579	20.65%	423,728	521,676	23.1%	543,783	4.2%
Township	Fillmore	2,756	1.70%	220,210	221,919	0.8%	231,290	4.2%
Township	Ganges	2,524	18.83%	174,386	199,685	14.5%	206,750	3.5%
Township	Gun Plain	5,637	18.57%	368,325	437,860	18.9%	456,477	4.3%
Township	Heath	3,100	34.96%	183,587	246,833	34.5%	256,448	3.9%
Township	Hopkins	2,079	18.53%	143,901	167,685	16.5%	174,130	3.8%
Township	Laketown	5,561	19.21%	384,461	441,766	14.9%	457,676	3.6%
Township	Lee	4,114	53.97%	241,401	422,446	75.0%	445,480	5.5%
Township	Leighton	3,652	19.00%	251,335	292,989	16.6%	302,734	3.3%
Township	Manlius	2,634	48.31%	151,570	219,222	44.6%	225,751	3.0%
Township	Martin	2,079	2.67%	178,405	183,229	2.7%	189,243	3.3%
Township	Monterey	2,065	34.62%	130,857	175,242	33.9%	181,646	3.7%
Township	Otsego	4,854	1.68%	382,551	398,773	4.2%	415,141	4.1%
Township	Overisel	2,594	11.62%	264,962	272,053	2.7%	275,408	1.2%

GENERAL REVENUE SHARING PAYMENTS TO LOCAL UNITS

APPENDIX B

Local Unit		2000		FY 1999-2000	FY 2000-01 Year-to-Date		FY 2001-02 Year-to-Date	
Type	Name	Population	% Change	Enacted Final	Enacted Final	% Change	Enacted Estimate	% Change
Township	Salem	3,486	28.73%	264,060	328,048	24.2%	334,285	1.9%
Township	Saugatuck	2,376	26.65%	162,341	190,532	17.4%	196,349	3.1%
Township	Trowbridge	2,519	8.20%	178,403	192,675	8.0%	208,089	8.0%
Township	Valley	1,831	59.91%	87,707	140,094	59.7%	145,887	4.1%
Township	Watson	2,086	9.96%	150,323	162,349	8.0%	175,337	8.0%
Township	Wayland	3,013	17.28%	192,487	230,508	19.8%	240,625	4.4%
City	Allegan	4,753	6.12%	661,452	677,803	2.5%	684,554	1.0%
City	Fennville	1,459	42.62%	130,664	180,652	38.3%	185,274	2.6%
City	Holland				<i>Split Unit: See Holland in Ottawa County</i>			
City	Otsego	3,933	-0.25%	526,556	513,217	-2.5%	500,968	-2.4%
City	Plainwell	3,933	-3.06%	527,361	522,069	-1.0%	517,220	-0.9%
City	Saugatuck	1,065	11.64%	121,768	122,112	0.3%	122,635	0.4%
City	South Haven				<i>Split Unit: See South Haven in Van Buren County</i>			
City	Wayland	3,939	43.18%	344,618	503,014	46.0%	508,238	1.0%
Village	Douglas	1,214	16.73%	118,996	124,584	4.7%	125,902	1.1%
Village	Hopkins	592	-0.67%	59,336	64,083	8.0%	67,089	4.7%
Village	Martin	435	-5.84%	50,371	50,536	0.3%	51,702	2.3%
Alpena County		31,278	2.32%	757,742	777,769	2.6%	771,814	-0.8%
Township	Alpena	9,788	1.94%	713,708	745,508	4.5%	780,624	4.7%
Township	Green	1,205	10.05%	81,316	89,384	9.9%	93,541	4.7%
Township	Long Rapids	1,019	-0.20%	78,794	82,173	4.3%	86,132	4.8%
Township	Maple Ridge	1,715	13.28%	112,692	134,076	19.0%	141,098	5.2%
Township	Ossineke	1,761	6.60%	126,633	134,333	6.1%	140,260	4.4%
Township	Sanborn	2,152	-2.00%	164,886	168,771	2.4%	177,338	5.1%
Township	Wellington	296	10.04%	20,486	22,355	9.1%	23,308	4.3%
Township	Wilson	2,074	9.04%	141,788	153,131	8.0%	165,381	8.0%
City	Alpena	11,268	-0.43%	1,711,767	1,748,576	2.2%	1,775,772	1.6%
Antrim County		23,086	27.05%	380,157	481,331	26.6%	476,935	-0.9%
Township	Banks	1,330	21.46%	87,434	102,442	17.2%	106,425	3.9%
Township	Central Lake	1,264	30.98%	83,729	101,242	20.9%	104,486	3.2%
Township	Chestonia	546	36.16%	31,540	42,713	35.4%	44,419	4.0%
Township	Custer	988	56.83%	50,551	73,651	45.7%	76,514	3.9%
Township	Echo	928	21.15%	57,217	70,527	23.3%	73,639	4.4%
Township	Elk Rapids	1,041	39.17%	59,452	77,129	29.7%	80,055	3.8%
Township	Forest Home	1,366	47.36%	76,561	103,687	35.4%	107,489	3.7%
Township	Helena	878	4.90%	69,068	69,641	0.8%	71,874	3.2%
Township	Jordan	875	50.09%	45,812	68,044	48.5%	71,356	4.9%
Township	Kearney	1,092	26.10%	75,717	88,123	16.4%	90,657	2.9%
Township	Mancelona	2,692	49.31%	146,352	208,877	42.7%	217,774	4.3%
Township	Milton	2,072	41.14%	112,448	150,618	33.9%	156,834	4.1%
Township	Star	745	29.57%	45,298	56,894	25.6%	59,233	4.1%
Township	Torch Lake	1,159	52.10%	57,440	82,669	43.9%	86,184	4.3%
Township	Warner	389	35.54%	22,987	29,786	29.6%	31,015	4.1%
Village	Bellaire	1,140	4.59%	137,555	144,529	5.1%	143,536	-0.7%
Village	Central Lake	990	3.77%	99,802	107,786	8.0%	111,691	3.6%
Village	Elk Rapids	1,700	4.55%	182,016	178,781	-1.8%	180,788	1.1%
Village	Ellsworth	483	15.55%	46,331	58,655	26.6%	60,756	3.6%
Village	Mancelona	1,408	2.77%	166,380	179,690	8.0%	192,750	7.3%

GENERAL REVENUE SHARING PAYMENTS TO LOCAL UNITS

APPENDIX B

Local Unit		2000		FY 1999-2000	FY 2000-01 Year-to-Date		FY 2001-02 Year-to-Date	
Type	Name	Population	% Change	Enacted Final	Enacted Final	% Change	Enacted Estimate	% Change
Arenac County		16,991	14.13%	317,152	361,819	14.1%	358,585	-0.9%
Township	Adams	550	31.89%	31,880	43,158	35.4%	45,319	5.0%
Township	Arenac	992	7.71%	68,050	73,494	8.0%	79,374	8.0%
Township	Au Gres	1,007	0.00%	79,333	78,882	-0.6%	82,004	4.0%
Township	Clayton	1,101	21.26%	72,135	90,403	25.3%	94,377	4.4%
Township	Deep River	1,711	10.10%	122,848	137,300	11.8%	143,275	4.4%
Township	Lincoln	1,012	8.47%	69,291	74,834	8.0%	80,821	8.0%
Township	Mason	882	15.29%	56,981	69,776	22.5%	73,581	5.5%
Township	Moffatt	1,121	43.72%	67,376	90,500	34.3%	93,877	3.7%
Township	Sims	1,091	30.50%	64,139	80,520	25.5%	83,890	4.2%
Township	Standish	2,026	4.16%	144,751	156,331	8.0%	167,255	7.0%
Township	Turner	423	5.49%	29,553	31,240	5.7%	32,712	4.7%
Township	Whitney	1,033	5.30%	74,334	77,099	3.7%	80,355	4.2%
City	Au Gres	1,028	22.67%	103,730	112,869	8.8%	114,183	1.2%
City	Omer	337	-12.47%	44,795	46,612	4.1%	47,953	2.9%
City	Standish	1,813	32.34%	202,717	256,797	26.7%	259,686	1.1%
Village	Sterling	533	2.50%	44,977	48,575	8.0%	52,461	8.0%
Village	Turner	139	-12.03%	16,968	18,325	8.0%	19,363	5.7%
Village	Twining	192	13.61%	20,390	25,084	23.0%	26,004	3.7%
Baraga County		8,444	6.89%	177,101	189,438	7.0%	187,831	-0.8%
Township	Arvon	482	14.22%	33,477	37,140	10.9%	38,544	3.8%
Township	Baraga	1,962	22.55%	134,794	167,248	24.1%	173,734	3.9%
Township	Covington	569	-12.60%	51,592	50,285	-2.5%	48,750	-3.1%
Township	L'Anse	1,819	12.77%	126,305	139,999	10.8%	145,938	4.2%
Township	Spurr	227	-1.73%	21,869	21,315	-2.5%	21,066	-1.2%
Village	Baraga	1,285	4.39%	142,570	153,976	8.0%	166,294	8.0%
Village	L'Anse	2,100	-2.37%	255,716	269,811	5.5%	281,084	4.2%
Barry County		56,720	13.37%	1,066,653	1,209,245	13.4%	1,198,445	-0.9%
Township	Assyria	1,912	6.28%	133,353	144,021	8.0%	154,673	7.4%
Township	Baltimore	1,845	8.47%	126,038	136,121	8.0%	147,011	8.0%
Township	Barry	3,489	9.37%	269,747	291,327	8.0%	312,928	7.4%
Township	Carlton	2,298	13.54%	157,248	184,633	17.4%	192,716	4.4%
Township	Castleton	1,886	5.60%	139,040	149,251	7.3%	155,606	4.3%
Township	Hastings	2,930	3.53%	208,907	225,356	7.9%	236,856	5.1%
Township	Hope	3,283	9.69%	233,634	252,325	8.0%	272,511	8.0%
Township	Irving	2,271	52.42%	114,145	173,691	52.2%	181,360	4.4%
Township	Johnstown	3,067	4.60%	226,929	243,048	7.1%	254,040	4.5%
Township	Maple Grove	1,376	2.92%	104,279	112,138	7.5%	117,139	4.5%
Township	Orangeville	3,321	15.31%	221,982	257,385	15.9%	268,453	4.3%
Township	Prairieville	3,175	-6.86%	273,364	266,439	-2.5%	265,369	-0.4%
Township	Rutland	3,646	30.35%	219,327	284,382	29.7%	296,185	4.2%
Township	Thornapple	3,964	21.60%	248,440	296,151	19.2%	308,098	4.0%
Township	Woodland	1,634	4.81%	122,726	128,313	4.6%	133,493	4.0%
Township	Yankee Springs	4,219	41.72%	218,607	306,372	40.1%	320,551	4.6%
City	Hastings	7,060	8.23%	904,280	958,077	5.9%	970,657	1.3%
Village	Freeport	444	-3.06%	44,614	47,429	6.3%	48,828	2.9%
Village	Middleville	2,721	38.40%	220,623	293,799	33.2%	298,161	1.5%

GENERAL REVENUE SHARING PAYMENTS TO LOCAL UNITS

APPENDIX B

Local Unit		2000		FY 1999-2000	FY 2000-01 Year-to-Date		FY 2001-02 Year-to-Date	
Type	Name	Population	% Change	Enacted Final	Enacted Final	% Change	Enacted Estimate	% Change
Village	Nashville	1,684	1.81%	193,774	209,276	8.0%	226,018	8.0%
Village	Woodland	495	6.22%	48,617	52,506	8.0%	56,706	8.0%
Bay County		110,061	-1.41%	2,772,133	2,762,464	-0.3%	2,741,507	-0.8%
Township	Bangor	15,547	-3.00%	1,397,828	1,400,346	0.2%	1,454,349	3.9%
Township	Beaver	2,806	-0.14%	231,054	241,868	4.7%	252,431	4.4%
Township	Frankenlust	2,530	10.92%	174,151	191,251	9.8%	199,133	4.1%
Township	Fraser	3,375	-8.29%	275,893	268,904	-2.5%	276,145	2.7%
Township	Garfield	1,775	2.25%	142,164	153,537	8.0%	161,590	5.2%
Township	Gibson	1,245	14.22%	84,745	101,973	20.3%	107,287	5.2%
Township	Hampton	9,902	4.01%	843,641	849,325	0.7%	875,013	3.0%
Township	Kawkawlin	5,104	5.15%	363,097	392,145	8.0%	414,172	5.6%
Township	Merritt	1,510	0.00%	123,943	123,579	-0.3%	128,500	4.0%
Township	Monitor	10,037	5.54%	722,395	774,684	7.2%	810,424	4.6%
Township	Mt Forest	1,405	-3.57%	115,298	117,300	1.7%	122,553	4.5%
Township	Pinconning	2,608	-1.47%	198,685	204,240	2.8%	214,389	5.0%
Township	Portsmouth	3,619	-7.63%	311,682	303,786	-2.5%	314,485	3.5%
Township	Williams	4,492	5.00%	354,929	367,675	3.6%	380,722	3.5%
City	Auburn	2,011	8.41%	206,012	222,493	8.0%	234,659	5.5%
City	Bay City	36,721	-5.48%	6,100,532	6,428,120	5.4%	6,511,366	1.3%
City	Essexville	3,766	-7.88%	483,668	471,416	-2.5%	477,451	1.3%
City	Midland				<i>Split Unit: See Midland in Midland County</i>			
City	Pinconning	1,386	7.36%	166,085	179,372	8.0%	186,332	3.9%
Benzie County		15,979	31.08%	261,239	338,883	29.7%	335,841	-0.9%
Township	Almira	2,535	106.10%	100,689	192,263	90.9%	200,161	4.1%
Township	Benzonia	1,957	27.49%	117,303	143,975	22.7%	149,958	4.2%
Township	Blaine	491	15.80%	32,630	36,798	12.8%	38,293	4.1%
Township	Colfax	438	48.47%	22,649	33,041	45.9%	34,397	4.1%
Township	Crystal Lake	960	26.48%	56,762	69,105	21.7%	72,035	4.2%
Township	Gilmore	393	24.37%	23,665	28,762	21.5%	30,004	4.3%
Township	Homestead	1,779	50.13%	90,156	135,587	50.4%	141,534	4.4%
Township	Inland	1,587	44.80%	81,366	121,892	49.8%	127,046	4.2%
Township	Joyfield	777	24.12%	46,480	59,209	27.4%	62,073	4.8%
Township	Lake	635	25.00%	36,899	44,482	20.6%	46,417	4.4%
Township	Platte	342	35.18%	18,717	25,383	35.6%	26,447	4.2%
Township	Weldon	220	44.74%	11,628	15,829	36.1%	16,466	4.0%
City	Frankfort	1,513	-2.13%	189,672	184,867	-2.5%	180,344	-2.4%
Village	Benzonia	519	15.59%	51,060	58,115	13.8%	59,545	2.5%
Village	Beulah	344	-16.30%	43,512	42,410	-2.5%	40,273	-5.0%
Village	Elberta	457	-4.39%	61,083	64,840	6.2%	65,928	1.7%
Village	Honor	299	2.40%	28,700	30,123	5.0%	30,687	1.9%
Village	Lake Ann	276	26.03%	15,491	20,036	29.3%	20,991	4.8%
Village	Thompsonville	457	9.86%	42,670	46,084	8.0%	49,771	8.0%
Berrien County		162,262	0.65%	3,781,753	3,833,663	1.4%	3,802,768	-0.8%
Township	Bainbridge	3,132	9.32%	211,140	228,031	8.0%	246,273	8.0%
Township	Baroda	2,022	-2.51%	187,661	182,907	-2.5%	184,877	1.1%
Township	Benton	16,404	-4.42%	1,822,181	1,836,970	0.8%	1,899,682	3.4%
Township	Berrien	4,603	4.54%	334,214	360,678	7.9%	376,945	4.5%

GENERAL REVENUE SHARING PAYMENTS TO LOCAL UNITS

APPENDIX B

Local Unit		2000		FY 1999-2000	FY 2000-01 Year-to-Date		FY 2001-02 Year-to-Date	
Type	Name	Population	% Change	Enacted Final	Enacted Final	% Change	Enacted Estimate	% Change
Township	Bertrand	2,380	6.82%	172,537	184,048	6.7%	191,709	4.2%
Township	Buchanan	3,510	3.24%	263,033	278,738	6.0%	290,044	4.1%
Township	Chikaming	3,678	-1.05%	283,826	276,636	-2.5%	285,759	3.3%
Township	Coloma	5,217	1.83%	460,676	473,778	2.8%	490,517	3.5%
Township	Galien	1,018	2.31%	76,340	78,064	2.3%	81,342	4.2%
Township	Hagar	3,964	-3.62%	302,466	296,809	-1.9%	311,076	4.8%
Township	Lake	3,148	26.58%	205,123	240,887	17.4%	249,244	3.5%
Township	Lincoln	12,761	3.13%	1,015,109	1,070,366	5.4%	1,114,250	4.1%
Township	New Buffalo	2,047	-2.94%	154,988	151,062	-2.5%	153,300	1.5%
Township	Niles	13,325	3.87%	1,121,851	1,211,599	8.0%	1,270,646	4.9%
Township	Oronoko	7,981	1.13%	680,187	707,195	4.0%	734,798	3.9%
Township	Pipestone	2,290	8.89%	160,266	173,087	8.0%	186,934	8.0%
Township	Royalton	3,888	24.02%	239,904	291,397	21.5%	304,096	4.4%
Township	St Joseph	9,182	3.45%	744,023	758,424	1.9%	784,495	3.4%
Township	Sodus	2,139	3.58%	177,054	187,111	5.7%	195,142	4.3%
Township	Three Oaks	1,120	-3.95%	88,210	85,975	-2.5%	87,249	1.5%
Township	Watervliet	3,392	15.93%	243,792	284,562	16.7%	294,589	3.5%
Township	Weesaw	2,065	-2.32%	167,257	165,849	-0.8%	172,839	4.2%
City	Benton Harbor	11,182	-12.76%	2,460,292	2,657,115	8.0%	2,742,241	3.2%
City	Bridgman	2,428	13.46%	266,954	274,843	3.0%	277,145	0.8%
City	Buchanan	4,681	-6.27%	841,117	839,524	-0.2%	847,143	0.9%
City	Coloma	1,595	-5.00%	223,742	228,462	2.1%	230,792	1.0%
City	New Buffalo	2,200	-5.05%	246,381	240,140	-2.5%	232,739	-3.1%
City	Niles	12,204	-2.04%	1,746,235	1,854,196	6.2%	1,898,758	2.4%
City	St Joseph	8,598	-5.07%	1,465,998	1,428,861	-2.5%	1,356,870	-5.0%
City	Watervliet	1,843	-1.29%	267,060	288,425	8.0%	305,044	5.8%
Village	Baroda	858	30.59%	71,602	95,269	33.1%	98,992	3.9%
Village	Berrien Springs	1,862	-3.37%	213,487	215,908	1.1%	221,199	2.5%
Village	Eau Claire	656	32.79%	79,719	97,064	21.8%	98,301	1.3%
Village	Galien	593	-0.50%	58,923	63,637	8.0%	68,439	7.5%
Village	Grand Beach	221	51.37%	13,228	17,688	33.7%	18,230	3.1%
Village	Michiana	200	21.95%	15,400	17,098	11.0%	17,515	2.4%
Village	Shoreham	860	16.69%	54,494	64,021	17.5%	67,071	4.8%
Village	Stevensville	1,191	-3.17%	122,657	119,707	-2.4%	122,796	2.6%
Village	Three Oaks	1,829	2.41%	212,252	229,232	8.0%	239,165	4.3%
Branch County		44,644	9.62%	954,269	1,039,983	9.0%	1,031,482	-0.8%
Township	Algansee	2,061	10.87%	137,195	155,825	13.6%	163,212	4.7%
Township	Batavia	1,546	1.58%	113,401	121,027	6.7%	127,317	5.2%
Township	Bethel	1,421	11.10%	94,965	110,541	16.4%	116,250	5.2%
Township	Bronson	1,358	10.59%	90,652	103,670	14.4%	108,722	4.9%
Township	Butler	1,362	14.36%	88,177	105,365	19.5%	110,259	4.6%
Township	California	909	14.05%	59,267	71,522	20.7%	75,327	5.3%
Township	Coldwater	4,709	41.88%	246,790	362,577	46.9%	380,148	4.8%
Township	Gilead	753	9.45%	50,771	54,833	8.0%	59,220	8.0%
Township	Girard	1,916	6.44%	132,885	143,516	8.0%	152,327	6.1%
Township	Kinderhook	1,614	24.92%	94,618	117,060	23.7%	122,354	4.5%
Township	Matteson	1,285	4.39%	91,467	98,784	8.0%	104,346	5.6%
Township	Noble	518	8.14%	35,294	38,118	8.0%	41,167	8.0%
Township	Ovid	2,432	15.64%	154,525	177,552	14.9%	185,513	4.5%

GENERAL REVENUE SHARING PAYMENTS TO LOCAL UNITS

APPENDIX B

Local Unit		2000		FY 1999-2000	FY 2000-01 Year-to-Date		FY 2001-02 Year-to-Date	
Type	Name	Population	% Change	Enacted Final	Enacted Final	% Change	Enacted Estimate	% Change
Township	Quincy	2,710	16.66%	173,695	202,861	16.8%	211,987	4.5%
Township	Sherwood	1,960	-1.51%	148,026	152,942	3.3%	160,735	5.1%
Township	Union	1,351	11.10%	93,851	103,606	10.4%	107,906	4.2%
City	Bronson	2,421	3.37%	347,182	374,957	8.0%	396,358	5.7%
City	Coldwater	10,523	2.09%	1,224,837	1,265,223	3.3%	1,265,486	0.0%
Village	Quincy	1,701	1.25%	233,795	252,499	8.0%	271,744	7.6%
Village	Sherwood	324	1.25%	29,492	31,851	8.0%	34,399	8.0%
Village	Union City	1,804	2.09%	207,809	224,434	8.0%	242,389	8.0%
Calhoun County		137,572	1.40%	3,155,000	3,218,893	2.0%	3,192,698	-0.8%
Township	Albion	1,200	-4.46%	110,342	107,547	-2.5%	107,624	0.1%
Township	Athens	1,460	-4.26%	121,090	118,023	-2.5%	121,297	2.8%
Township	Bedford	9,411	-2.05%	798,922	847,570	6.1%	887,796	4.7%
Township	Burlington	1,490	1.22%	109,225	113,831	4.2%	119,361	4.9%
Township	Clarence	2,032	-0.93%	151,266	152,778	1.0%	160,060	4.8%
Township	Clarendon	1,114	1.27%	81,635	85,031	4.2%	90,175	6.0%
Township	Convis	1,666	-4.20%	128,395	126,658	-1.4%	132,760	4.8%
Township	Eckford	1,282	5.34%	95,338	100,148	5.0%	104,397	4.2%
Township	Emmett	11,979	11.29%	886,875	1,024,795	15.6%	1,067,002	4.1%
Township	Fredonia	1,723	-1.03%	141,448	143,680	1.6%	149,009	3.7%
Township	Homer	1,159	3.76%	82,521	85,542	3.7%	89,388	4.5%
Township	Lee	1,257	-1.87%	94,792	95,711	1.0%	100,464	5.0%
Township	Leroy	3,240	7.07%	228,661	246,954	8.0%	261,681	6.0%
Township	Marengo	2,131	19.65%	139,928	170,734	22.0%	178,653	4.6%
Township	Marshall	2,922	11.31%	205,770	226,425	10.0%	235,967	4.2%
Township	Newton	2,493	23.11%	156,791	194,287	23.9%	202,927	4.4%
Township	Pennfield	8,913	6.44%	726,267	784,368	8.0%	834,930	6.4%
Township	Sheridan	2,116	-1.08%	189,714	193,346	1.9%	200,607	3.8%
Township	Tekonsha	1,022	0.59%	75,171	75,997	1.1%	79,417	4.5%
City	Albion	9,144	-9.16%	1,448,288	1,549,147	7.0%	1,585,330	2.3%
City	Battle Creek	53,057	-0.86%	7,969,005	7,964,925	-0.1%	8,052,514	1.1%
City	Marshall	7,459	8.48%	954,309	949,315	-0.5%	951,539	0.2%
City	Springfield	5,189	-7.04%	1,002,006	1,017,642	1.6%	1,013,832	-0.4%
Village	Athens	1,111	12.22%	108,129	133,121	23.1%	138,100	3.7%
Village	Burlington	405	37.76%	31,431	49,440	57.3%	52,008	5.2%
Village	Homer	1,851	5.29%	218,822	236,328	8.0%	255,234	8.0%
Village	Tekonsha	712	-2.86%	76,876	81,244	5.7%	83,747	3.1%
Village	Union City							
<i>Split Unit: See Union City in Branch County</i>								
Cass County		51,035	3.20%	1,071,557	1,112,568	3.8%	1,102,851	-0.9%
Township	Calvin	2,041	12.58%	137,172	157,994	15.2%	165,236	4.6%
Township	Howard	6,309	-1.08%	486,057	501,885	3.3%	525,408	4.7%
Township	Jefferson	2,401	13.68%	160,318	186,713	16.5%	194,893	4.4%
Township	Lagrange	1,600	1.01%	122,582	122,377	-0.2%	127,305	4.0%
Township	Marcellus	1,550	12.65%	109,439	121,199	10.7%	126,074	4.0%
Township	Mason	2,514	2.61%	187,585	202,406	7.9%	211,426	4.5%
Township	Milton	2,646	15.85%	173,664	205,852	18.5%	213,584	3.8%
Township	Newberg	1,703	4.67%	128,167	138,228	7.8%	144,240	4.3%
Township	Ontwa	4,718	6.02%	366,713	384,026	4.7%	397,706	3.6%
Township	Penn	1,473	-3.09%	115,972	113,034	-2.5%	115,048	1.8%

GENERAL REVENUE SHARING PAYMENTS TO LOCAL UNITS

APPENDIX B

Local Unit		2000		FY 1999-2000	FY 2000-01 Year-to-Date		FY 2001-02 Year-to-Date	
Type	Name	Population	% Change	Enacted Final	Enacted Final	% Change	Enacted Estimate	% Change
Township	Pokagon	2,199	0.50%	167,553	174,542	4.2%	182,591	4.6%
Township	Porter	3,794	-1.63%	290,878	287,108	-1.3%	299,403	4.3%
Township	Silver Creek	3,491	16.06%	220,373	254,295	15.4%	266,041	4.6%
Township	Volinia	1,174	13.76%	80,793	92,777	14.8%	96,796	4.3%
Township	Wayne	2,861	3.25%	206,063	221,327	7.4%	232,584	5.1%
City	Dowagiac	6,147	-5.59%	911,300	966,666	6.1%	987,444	2.1%
City	Niles							
								<i>Split Unit: See Niles in Berrien County</i>
Village	Cassopolis	1,671	-7.06%	251,039	256,626	2.2%	261,777	2.0%
Village	Edwardsburg	1,147	0.44%	124,608	134,577	8.0%	145,343	8.0%
Village	Marcellus	1,162	-2.60%	145,276	156,898	8.0%	169,450	8.0%
Village	Vandalia	429	20.17%	39,009	58,709	50.5%	61,776	5.2%
Charlevoix County		26,075	21.54%	474,738	570,725	20.2%	565,762	-0.9%
Township	Bay	1,068	29.45%	62,130	77,398	24.6%	80,660	4.2%
Township	Boyne Valley	845	15.28%	64,418	69,896	8.5%	71,791	2.7%
Township	Chandler	230	26.37%	13,914	16,880	21.3%	17,595	4.2%
Township	Charlevoix	1,697	67.03%	88,076	131,166	48.9%	135,825	3.6%
Township	Evangeline	773	19.66%	49,346	57,283	16.1%	59,610	4.1%
Township	Eveline	1,560	41.82%	89,121	117,397	31.7%	121,708	3.7%
Township	Hayes	1,893	43.74%	100,261	137,990	37.6%	143,746	4.2%
Township	Hudson	639	32.85%	39,098	49,645	27.0%	51,558	3.9%
Township	Marion	1,492	32.04%	88,210	113,565	28.7%	118,361	4.2%
Township	Melrose	1,388	25.50%	86,919	104,878	20.7%	108,996	3.9%
Township	Norwood	714	38.37%	37,902	51,501	35.9%	53,825	4.5%
Township	Peaine	244	90.63%	12,048	19,179	59.2%	19,776	3.1%
Township	St James	307	11.23%	28,609	29,063	1.6%	29,503	1.5%
Township	South Arm	1,844	30.04%	107,741	137,940	28.0%	143,975	4.4%
Township	Wilson	2,022	45.36%	112,102	165,401	47.5%	172,625	4.4%
City	Boyne City	3,503	0.72%	484,140	471,876	-2.5%	455,414	-3.5%
City	Charlevoix	2,979	-3.93%	350,742	341,857	-2.5%	329,628	-3.6%
City	East Jordan	2,507	11.92%	325,864	350,137	7.4%	350,309	0.0%
Village	Boyne Falls	370	0.27%	40,891	44,162	8.0%	44,735	1.3%
Cheboygan County		26,413	23.52%	454,998	559,079	22.9%	554,051	-0.9%
Township	Aloha	1,041	47.24%	54,898	78,237	42.5%	81,655	4.4%
Township	Beaugrand	1,157	15.24%	78,571	90,750	15.5%	94,512	4.1%
Township	Benton	3,080	28.98%	179,401	230,104	28.3%	240,529	4.5%
Township	Burt	654	22.70%	39,145	46,425	18.6%	48,418	4.3%
Township	Ellis	519	50.43%	27,070	39,299	45.2%	40,940	4.2%
Township	Forest	1,080	16.25%	68,923	84,230	22.2%	88,776	5.4%
Township	Grant	947	38.05%	53,349	71,738	34.5%	74,841	4.3%
Township	Hebron	303	50.00%	15,576	22,868	46.8%	23,831	4.2%
Township	Inverness	2,278	16.05%	154,162	176,562	14.5%	183,870	4.1%
Township	Koehler	1,168	61.77%	52,814	84,271	59.6%	88,318	4.8%
Township	Mackinaw	257	31.12%	14,739	18,351	24.5%	19,103	4.1%
Township	Mentor	781	50.77%	39,069	58,992	51.0%	61,835	4.8%
Township	Mullett	1,284	22.64%	81,140	96,139	18.5%	100,032	4.0%
Township	Munro	679	32.62%	38,077	49,278	29.4%	51,469	4.4%
Township	Nunda	632	27.16%	38,659	47,742	23.5%	49,692	4.1%
Township	Tuscarora	3,091	34.57%	194,231	244,147	25.7%	252,694	3.5%

GENERAL REVENUE SHARING PAYMENTS TO LOCAL UNITS

APPENDIX B

Local Unit		2000		FY 1999-2000	FY 2000-01 Year-to-Date		FY 2001-02 Year-to-Date	
Type	Name	Population	% Change	Enacted Final	Enacted Final	% Change	Enacted Estimate	% Change
Township	Walker	292	14.06%	18,937	22,811	20.5%	23,959	5.0%
Township	Waverly	472	27.22%	28,361	34,892	23.0%	36,381	4.3%
Township	Wilmot	760	41.53%	40,606	59,329	46.1%	62,213	4.9%
City	Cheboygan	5,260	5.58%	713,144	770,196	8.0%	799,700	3.8%
Village	Mackinaw City	859	-1.83%	113,599	110,721	-2.5%	105,142	-5.0%
Village	Wolverine	359	26.86%	31,571	44,377	40.6%	46,038	3.7%
Chippewa County		36,248	11.18%	680,866	759,622	11.6%	752,721	-0.9%
Township	Bay Mills	1,214	54.26%	58,081	90,528	55.9%	94,673	4.6%
Township	Bruce	1,940	20.50%	121,159	152,342	25.7%	159,602	4.8%
Township	Chippewa	238	-14.70%	20,912	20,382	-2.5%	19,592	-3.9%
Township	Dafter	1,304	20.41%	82,034	103,427	26.1%	108,515	4.9%
Township	De Tour	473	18.55%	33,306	37,337	12.1%	38,587	3.3%
Township	Drummond	992	18.80%	69,200	77,827	12.5%	80,460	3.4%
Township	Hulbert	211	1.44%	19,030	19,008	-0.1%	19,390	2.0%
Township	Kinross	5,686	24.28%	374,362	587,058	56.8%	629,649	7.3%
Township	Pickford	1,584	16.47%	113,947	137,646	20.8%	143,502	4.3%
Township	Raber	670	17.75%	46,567	53,284	14.4%	55,273	3.7%
Township	Rudyard	1,315	3.54%	107,462	116,059	8.0%	122,453	5.5%
Township	Soo	2,652	22.49%	162,221	200,024	23.3%	209,397	4.7%
Township	Sugar Island	683	54.88%	39,083	55,362	41.7%	57,229	3.4%
Township	Superior	1,329	34.24%	81,482	110,670	35.8%	115,193	4.1%
Township	Trout Lake	465	8.39%	32,070	34,636	8.0%	36,274	4.7%
Township	Whitefish	588	13.73%	39,457	43,578	10.4%	45,303	4.0%
City	Sault Ste Marie	14,483	-1.33%	1,963,978	2,121,096	8.0%	2,183,958	3.0%
Village	De Tour	421	3.44%	41,594	41,580	0.0%	42,404	2.0%
Clare County		31,170	25.08%	563,895	692,881	22.9%	686,946	-0.9%
Township	Arthur	667	22.61%	43,128	53,845	24.8%	56,264	4.5%
Township	Franklin	809	34.83%	47,282	62,788	32.8%	65,608	4.5%
Township	Freeman	1,118	82.38%	51,632	86,305	67.2%	89,730	4.0%
Township	Frost	1,159	40.31%	60,717	85,920	41.5%	89,958	4.7%
Township	Garfield	1,968	33.24%	112,749	147,868	31.1%	154,502	4.5%
Township	Grant	3,034	15.10%	194,674	232,351	19.4%	243,007	4.6%
Township	Greenwood	1,059	47.49%	56,328	81,009	43.8%	84,814	4.7%
Township	Hamilton	1,988	28.59%	116,480	152,273	30.7%	159,702	4.9%
Township	Hatton	923	37.15%	49,581	70,255	41.7%	73,852	5.1%
Township	Hayes	4,916	29.00%	293,043	407,934	39.2%	428,852	5.1%
Township	Lincoln	1,758	40.30%	105,990	138,198	30.4%	143,173	3.6%
Township	Redding	526	17.41%	33,529	40,231	20.0%	42,242	5.0%
Township	Sheridan	1,588	51.09%	75,523	122,306	61.9%	129,592	6.0%
Township	Summerfield	453	43.35%	28,760	37,681	31.0%	38,945	3.4%
Township	Surrey	2,700	13.92%	199,150	221,679	11.3%	229,478	3.5%
Township	Winterfield	483	30.19%	31,701	38,333	20.9%	39,665	3.5%
City	Clare	3,173	4.44%	407,216	434,464	6.7%	443,066	2.0%
City	Harrison	2,026	12.31%	196,877	229,474	16.6%	230,771	0.6%
Village	Farwell	855	0.47%	94,628	98,911	4.5%	100,999	2.1%
Clinton County		64,666	11.73%	1,198,339	1,344,397	12.2%	1,332,085	-0.9%
Township	Bath	7,541	18.07%	583,410	685,466	17.5%	703,798	2.7%

GENERAL REVENUE SHARING PAYMENTS TO LOCAL UNITS

APPENDIX B

Local Unit		2000		FY 1999-2000	FY 2000-01 Year-to-Date		FY 2001-02 Year-to-Date	
Type	Name	Population	% Change	Enacted Final	Enacted Final	% Change	Enacted Estimate	% Change
Township	Bengal	1,174	18.71%	78,175	92,062	17.8%	96,090	4.4%
Township	Bingham	2,776	13.86%	187,237	216,140	15.4%	226,057	4.6%
Township	Dallas	1,187	-2.63%	95,322	92,907	-2.5%	95,634	2.9%
Township	Dewitt	12,143	16.22%	920,123	1,093,509	18.8%	1,132,859	3.6%
Township	Duplain	1,274	-0.31%	95,052	94,941	-0.1%	99,066	4.3%
Township	Eagle	2,211	8.86%	155,014	167,415	8.0%	175,327	4.7%
Township	Essex	1,169	17.25%	73,557	86,351	17.4%	90,325	4.6%
Township	Greenbush	2,115	4.29%	150,296	160,627	6.9%	168,347	4.8%
Township	Lebanon	663	6.08%	47,821	51,237	7.1%	53,646	4.7%
Township	Olive	2,322	9.43%	156,858	169,407	8.0%	182,960	8.0%
Township	Ovid	1,978	18.94%	128,877	150,660	16.9%	157,234	4.4%
Township	Riley	1,767	14.52%	118,023	136,194	15.4%	142,021	4.3%
Township	Victor	3,275	17.64%	205,709	247,337	20.2%	259,068	4.7%
Township	Watertown	4,162	11.55%	326,025	349,958	7.3%	360,796	3.1%
Township	Westphalia	1,381	4.70%	103,669	107,189	3.4%	111,372	3.9%
City	Dewitt	4,702	18.62%	411,904	472,077	14.6%	487,936	3.4%
City	East Lansing				<i>Split Unit: See East Lansing in Ingham County</i>			
City	St Johns	7,398	0.27%	845,531	876,665	3.7%	899,604	2.6%
Village	Eagle	130	8.33%	10,354	11,182	8.0%	12,077	8.0%
Village	Elsie	1,055	10.24%	119,982	138,687	15.6%	141,674	2.2%
Village	Fowler	1,136	21.24%	90,389	111,695	23.6%	115,677	3.6%
Village	Hubbardston				<i>Split Unit: See Hubbardston in Ionia County</i>			
Village	Maple Rapids	643	-5.44%	73,798	79,702	8.0%	82,947	4.1%
Village	Ovid	1,514	4.99%	164,604	177,772	8.0%	186,655	5.0%
Village	Westphalia	876	12.31%	73,024	82,717	13.3%	85,480	3.3%
Crawford County		14,083	17.09%	273,232	316,410	15.8%	313,729	-0.8%
Township	Beaver Creek	1,486	26.47%	86,336	106,970	23.9%	112,235	4.9%
Township	Frederic	1,382	7.38%	100,964	107,601	6.6%	111,984	4.1%
Township	Grayling	6,362	17.25%	400,309	476,914	19.1%	500,518	4.9%
Township	Lovells	578	37.62%	31,873	42,076	32.0%	43,886	4.3%
Township	Maple Forest	498	22.36%	31,309	37,947	21.2%	39,529	4.2%
Township	South Branch	1,842	33.48%	112,568	144,083	28.0%	149,746	3.9%
City	Grayling	1,935	0.16%	307,138	299,358	-2.5%	291,962	-2.5%
Delta County		38,469	1.87%	841,205	862,566	2.5%	855,241	-0.8%
Township	Baldwin	748	3.03%	59,136	60,056	1.6%	62,221	3.6%
Township	Bark River	1,650	6.59%	119,065	128,590	8.0%	138,877	8.0%
Township	Bay De Noc	329	2.81%	25,049	25,354	1.2%	26,300	3.7%
Township	Brampton	1,090	-4.22%	87,565	89,872	2.6%	94,272	4.9%
Township	Cornell	557	5.29%	40,603	43,851	8.0%	46,063	5.0%
Township	Ensign	780	16.59%	51,697	60,359	16.8%	63,121	4.6%
Township	Escanaba	3,587	7.40%	247,125	266,895	8.0%	288,247	8.0%
Township	Fairbanks	321	3.88%	23,114	23,960	3.7%	25,000	4.3%
Township	Ford River	2,241	11.94%	147,878	171,990	16.3%	180,187	4.8%
Township	Garden	577	12.04%	41,162	44,869	9.0%	46,505	3.6%
Township	Maple Ridge	808	-2.53%	65,392	66,490	1.7%	69,489	4.5%
Township	Masonville	1,877	9.83%	126,526	136,648	8.0%	147,388	7.9%
Township	Nahma	499	1.63%	37,440	37,645	0.5%	39,188	4.1%
Township	Wells	5,044	-2.23%	366,661	359,077	-2.1%	377,983	5.3%

GENERAL REVENUE SHARING PAYMENTS TO LOCAL UNITS

APPENDIX B

Local Unit		2000		FY 1999-2000	FY 2000-01 Year-to-Date		FY 2001-02 Year-to-Date	
Type	Name	Population	% Change	Enacted Final	Enacted Final	% Change	Enacted Estimate	% Change
City	Escanaba	13,089	-4.05%	1,754,044	1,857,670	5.9%	1,903,942	2.5%
City	Gladstone	5,032	10.13%	559,913	677,318	21.0%	694,857	2.6%
Village	Garden	240	-10.45%	25,080	25,819	2.9%	26,658	3.3%
Dickinson County		27,424	2.48%	570,390	588,764	3.2%	583,543	-0.9%
Township	Breen	479	3.23%	39,032	40,540	3.9%	42,377	4.5%
Township	Breitung	5,930	8.15%	439,570	464,356	5.6%	483,603	4.1%
Township	Felch	726	2.98%	53,749	56,082	4.3%	58,656	4.6%
Township	Norway	1,639	23.70%	105,648	132,494	25.4%	138,291	4.4%
Township	Sagola	1,169	0.26%	93,313	92,655	-0.7%	96,280	3.9%
Township	Waucedah	800	15.44%	52,304	60,112	14.9%	62,818	4.5%
Township	West Branch	67	-16.25%	6,059	5,906	-2.5%	5,608	-5.0%
City	Iron Mountain	8,106	-4.12%	1,086,232	1,093,764	0.7%	1,120,104	2.4%
City	Kingsford	5,549	1.26%	718,174	763,555	6.3%	783,099	2.6%
City	Norway	2,959	1.68%	342,181	369,555	8.0%	394,478	6.7%
Eaton County		103,537	11.54%	2,105,439	2,336,173	11.0%	2,316,459	-0.8%
Township	Bellevue	1,779	15.74%	113,951	132,276	16.1%	138,363	4.6%
Township	Benton	2,712	7.28%	190,487	205,726	8.0%	218,197	6.1%
Township	Brookfield	1,429	7.36%	98,347	106,215	8.0%	113,931	7.3%
Township	Carmel	2,626	7.93%	179,897	194,289	8.0%	209,832	8.0%
Township	Chester	1,778	10.99%	118,528	135,305	14.2%	141,997	4.9%
Township	Delta Charter	29,682	13.60%	2,433,074	2,727,722	12.1%	2,816,307	3.2%
Township	Eaton	4,278	22.51%	257,778	323,788	25.6%	342,039	5.6%
Township	Eaton Rapids	3,821	27.24%	221,433	286,654	29.5%	300,261	4.7%
Township	Hamlin	2,953	25.61%	173,728	223,529	28.7%	234,520	4.9%
Township	Kalamo	1,742	4.62%	123,672	133,566	8.0%	142,086	6.4%
Township	Oneida	3,703	17.41%	242,065	282,543	16.7%	295,431	4.6%
Township	Roxand	1,346	2.51%	108,736	110,327	1.5%	114,249	3.6%
Township	Sunfield	1,586	7.45%	109,250	117,990	8.0%	123,982	5.1%
Township	Vermontville	1,311	17.05%	86,812	101,444	16.9%	105,736	4.2%
Township	Walton	2,011	16.31%	128,727	154,907	20.3%	161,903	4.5%
Township	Windsor	5,998	15.06%	404,896	463,733	14.5%	483,729	4.3%
City	Charlotte	8,280	3.07%	993,440	1,072,915	8.0%	1,098,007	2.3%
City	Eaton Rapids	5,330	13.53%	486,102	569,105	17.1%	589,897	3.7%
City	Grand Ledge	7,795	1.86%	843,275	910,737	8.0%	931,811	2.3%
City	Lansing							
City	Olivet	1,758	9.60%	189,278	204,420	8.0%	220,774	8.0%
City	Potterville	2,168	42.35%	176,411	267,562	51.7%	274,475	2.6%
Village	Bellevue	1,365	-2.57%	148,771	160,673	8.0%	173,527	8.0%
Village	Dimondale	1,342	7.62%	113,935	123,050	8.0%	131,670	7.0%
Village	Mulliken	557	-5.59%	53,253	55,211	3.7%	57,407	4.0%
Village	Sunfield	591	-3.11%	63,439	66,844	5.4%	69,091	3.4%
Village	Vermontville	789	1.68%	90,481	97,719	8.0%	105,537	8.0%
Emmet County		31,343	25.58%	531,516	663,192	24.8%	657,224	-0.9%
Township	Bear Creek	5,269	51.89%	261,274	384,147	47.0%	401,146	4.4%
Township	Bliss	572	18.43%	35,531	42,502	19.6%	44,384	4.4%
Township	Carp Lake	807	35.18%	47,660	62,029	30.1%	64,549	4.1%
Township	Center	499	11.38%	34,147	38,137	11.7%	39,788	4.3%

Split Unit: See Lansing in Ingham County

GENERAL REVENUE SHARING PAYMENTS TO LOCAL UNITS

APPENDIX B

Local Unit		2000		FY 1999-2000	FY 2000-01 Year-to-Date		FY 2001-02 Year-to-Date	
Type	Name	Population	% Change	Enacted Final	Enacted Final	% Change	Enacted Estimate	% Change
Township	Cross Village	294	46.27%	15,181	21,047	38.6%	21,931	4.2%
Township	Friendship	844	42.81%	44,917	61,366	36.6%	63,952	4.2%
Township	Littlefield	1,998	22.35%	123,239	148,833	20.8%	155,423	4.4%
Township	Little Traverse	2,426	34.40%	132,746	173,180	30.5%	180,733	4.4%
Township	Maple River	1,062	59.94%	48,676	77,336	58.9%	81,075	4.8%
Township	Mc Kinley	668	15.97%	42,737	49,652	16.2%	51,821	4.4%
Township	Pleasantview	881	134.93%	27,590	61,200	121.8%	63,950	4.5%
Township	Readmond	493	31.82%	28,806	36,079	25.2%	37,525	4.0%
Township	Resort	2,479	19.87%	157,909	183,142	16.0%	190,454	4.0%
Township	Springvale	1,727	32.85%	97,513	128,406	31.7%	134,127	4.5%
Township	Wawatam	165	71.88%	7,224	11,600	60.6%	12,096	4.3%
Township	West Traverse	1,448	49.59%	71,007	101,506	43.0%	106,006	4.4%
City	Harbor Springs	1,567	1.75%	138,936	137,470	-1.1%	141,146	2.7%
City	Petoskey	6,048	0.07%	732,872	714,307	-2.5%	701,007	-1.9%
Village	Alanson	785	15.95%	70,775	84,070	18.8%	86,789	3.2%
Village	Mackinaw City				<i>Split Unit: See Mackinaw City in Cheboygan County</i>			
Village	Pellston	771	32.25%	76,467	108,500	41.9%	111,610	2.9%
Genesee County		435,804	1.30%	10,399,954	10,594,272	1.9%	10,511,291	-0.8%
Township	Argentine	6,521	40.21%	342,645	491,409	43.4%	514,311	4.7%
Township	Atlas	5,904	27.38%	353,145	441,179	24.9%	460,032	4.3%
Township	Clayton	7,461	2.43%	564,928	595,083	5.3%	619,551	4.1%
Township	Davison	17,722	20.80%	1,230,073	1,562,185	27.0%	1,627,068	4.2%
Township	Fenton	12,968	28.74%	785,940	989,086	25.8%	1,029,570	4.1%
Township	Flint	33,651	-1.24%	3,027,127	3,074,524	1.6%	3,183,084	3.5%
Township	Flushing	10,230	10.92%	753,114	863,681	14.7%	898,317	4.0%
Township	Forest	3,795	4.55%	269,062	284,099	5.6%	296,964	4.5%
Township	Gaines	6,125	23.39%	368,061	469,175	27.5%	491,609	4.8%
Township	Genesee	24,125	0.13%	2,339,635	2,526,806	8.0%	2,728,950	8.0%
Township	Grand Blanc	29,827	17.47%	2,353,724	2,726,521	15.8%	2,817,869	3.4%
Township	Montrose	6,336	1.60%	499,123	539,053	8.0%	566,710	5.1%
Township	Mt Morris	23,725	-5.85%	2,622,137	2,831,908	8.0%	2,928,038	3.4%
Township	Mundy	12,191	5.73%	1,043,146	1,077,052	3.3%	1,107,118	2.8%
Township	Richfield	8,170	12.36%	590,324	682,664	15.6%	710,170	4.0%
Township	Thetford	8,277	-0.67%	623,094	656,234	5.3%	689,935	5.1%
Township	Vienna	13,108	-0.77%	1,106,038	1,188,254	7.4%	1,234,370	3.9%
City	Burton	30,308	10.46%	2,704,036	3,163,906	17.0%	3,270,145	3.4%
City	Clio	2,483	-5.55%	326,458	350,281	7.3%	360,371	2.9%
City	Davison	5,536	-2.76%	705,331	750,219	6.4%	767,922	2.4%
City	Fenton	10,582	25.47%	926,879	1,072,843	15.7%	1,094,653	2.0%
City	Flint	124,646	-11.40%	23,817,145	24,040,991	0.9%	24,561,201	2.2%
City	Flushing	8,348	-2.27%	892,837	895,151	0.3%	919,033	2.7%
City	Grand Blanc	8,242	6.21%	848,547	865,538	2.0%	881,121	1.8%
City	Montrose	1,619	-10.60%	219,870	232,416	5.7%	238,388	2.6%
City	Mt Morris	3,194	-2.98%	417,793	451,216	8.0%	487,313	8.0%
City	Swartz Creek	5,102	5.17%	585,662	585,234	-0.1%	588,052	0.5%
City	Linden	2,861	18.86%	253,770	303,385	19.6%	308,392	1.7%
Village	Gaines	366	-14.29%	47,514	47,861	0.7%	49,039	2.5%
Village	Goodrich	1,353	47.71%	87,616	116,726	33.2%	120,249	3.0%
Village	Lennon				<i>Split Unit: See Lennon in Shiawassee County</i>			

GENERAL REVENUE SHARING PAYMENTS TO LOCAL UNITS

APPENDIX B

Local Unit		2000		FY 1999-2000	FY 2000-01 Year-to-Date		FY 2001-02 Year-to-Date	
Type	Name	Population	% Change	Enacted Final	Enacted Final	% Change	Enacted Estimate	% Change
Village	Otisville	882	21.82%	85,321	111,966	31.2%	115,609	3.3%
Village	Otter Lake				<i>Split Unit: See Otter Lake in Lapeer County</i>			
Gladwin County		25,988	18.81%	460,017	546,014	18.7%	541,066	-0.9%
Township	Beaverton	1,815	8.62%	134,010	144,731	8.0%	156,309	8.0%
Township	Bentley	859	14.38%	59,299	71,361	20.3%	74,851	4.9%
Township	Billings	2,715	17.79%	177,499	209,224	17.9%	217,983	4.2%
Township	Bourret	471	17.75%	32,774	37,283	13.8%	38,617	3.6%
Township	Buckeye	1,333	39.00%	73,026	104,458	43.0%	109,508	4.8%
Township	Butman	1,947	63.89%	89,258	140,692	57.6%	146,973	4.5%
Township	Clement	994	20.92%	65,097	76,321	17.2%	79,423	4.1%
Township	Gladwin	1,044	13.97%	70,509	83,919	19.0%	87,777	4.6%
Township	Grim	129	29.00%	7,333	9,373	27.8%	9,805	4.6%
Township	Grout	1,869	14.94%	125,141	153,069	22.3%	160,577	4.9%
Township	Hay	1,402	19.52%	93,206	111,226	19.3%	116,332	4.6%
Township	Sage	2,617	20.21%	166,561	204,776	22.9%	214,689	4.8%
Township	Secord	1,140	24.73%	70,128	84,589	20.6%	88,078	4.1%
Township	Sherman	1,029	29.27%	60,960	79,387	30.2%	83,113	4.7%
Township	Tobacco	2,552	14.49%	174,098	199,363	14.5%	207,493	4.1%
City	Beaverton	1,106	-3.83%	160,597	173,445	8.0%	176,504	1.8%
City	Gladwin	2,966	10.01%	359,456	417,610	16.2%	423,991	1.5%
Gogebic County		17,146	-4.05%	371,689	360,784	-2.9%	357,520	-0.9%
Township	Bessemer	1,270	-7.57%	127,938	124,697	-2.5%	128,643	3.2%
Township	Erwin	357	-25.16%	43,290	42,193	-2.5%	40,067	-5.0%
Township	Ironwood	2,330	1.17%	192,037	197,780	3.0%	205,652	4.0%
Township	Marenisco	840	7.14%	74,887	76,672	2.4%	78,376	2.2%
Township	Wakefield	364	-19.47%	37,217	36,274	-2.5%	34,446	-5.0%
Township	Watersmeet	1,472	40.46%	87,142	113,828	30.6%	117,913	3.6%
City	Bessemer	2,135	-5.70%	289,875	313,065	8.0%	334,346	6.8%
City	Ironwood	6,293	-8.12%	1,021,031	1,102,713	8.0%	1,131,981	2.7%
City	Wakefield	2,085	-10.05%	295,624	319,274	8.0%	344,816	8.0%
Grand Traverse County		77,522	20.96%	1,416,942	1,696,211	19.7%	1,681,451	-0.9%
Township	Acme	4,332	25.67%	263,000	321,254	22.1%	334,480	4.1%
Township	Blair	6,448	22.84%	439,541	553,671	26.0%	574,786	3.8%
Township	East Bay	9,919	19.41%	642,493	760,662	18.4%	792,823	4.2%
Township	Fife Lake	990	16.75%	67,228	77,137	14.7%	80,086	3.8%
Township	Garfield	13,840	31.61%	875,949	1,098,321	25.4%	1,138,407	3.6%
Township	Grant	947	27.11%	54,938	70,006	27.4%	73,261	4.6%
Township	Green Lake	5,009	36.23%	270,429	367,989	36.1%	385,277	4.7%
Township	Long Lake	7,648	27.96%	438,188	563,124	28.5%	589,436	4.7%
Township	Mayfield	1,271	31.44%	71,404	95,717	34.0%	100,231	4.7%
Township	Paradise	2,722	53.79%	131,151	205,248	56.5%	214,374	4.4%
Township	Peninsula	5,265	21.31%	345,915	402,199	16.3%	417,268	3.7%
Township	Union	417	63.53%	18,715	30,097	60.8%	31,547	4.8%
Township	Whitewater	2,467	35.18%	139,255	182,329	30.9%	190,082	4.3%
City	Traverse City	14,461	-4.07%	1,826,991	1,780,710	-2.5%	1,734,672	-2.6%
Village	Fife Lake	466	18.27%	41,002	50,342	22.8%	51,521	2.3%
Village	Kingsley	1,469	99.05%	75,320	158,534	110.5%	165,567	4.4%

GENERAL REVENUE SHARING PAYMENTS TO LOCAL UNITS

APPENDIX B

Local Unit		2000		FY 1999-2000	FY 2000-01 Year-to-Date		FY 2001-02 Year-to-Date	
Type	Name	Population	% Change	Enacted Final	Enacted Final	% Change	Enacted Estimate	% Change
Gratiot County		40,818	5.44%	878,841	928,163	5.6%	920,392	-0.8%
Township	Arcada	1,708	2.89%	126,084	133,479	5.9%	139,877	4.8%
Township	Bethany	2,096	57.24%	98,756	162,207	64.3%	170,860	5.3%
Township	Elba	868	-0.46%	66,838	67,514	1.0%	70,454	4.4%
Township	Emerson	966	-2.82%	77,058	75,848	-1.6%	79,194	4.4%
Township	Fulton	1,974	14.70%	127,267	149,006	17.1%	156,208	4.8%
Township	Hamilton	491	0.41%	39,089	40,804	4.4%	42,740	4.7%
Township	Lafayette	656	-3.95%	54,591	53,208	-2.5%	54,271	2.0%
Township	Newark	1,149	0.97%	84,295	87,345	3.6%	91,296	4.5%
Township	New Haven	1,016	4.53%	73,721	79,223	7.5%	82,988	4.8%
Township	North Shade	706	-6.86%	56,033	54,614	-2.5%	55,655	1.9%
Township	North Star	996	-5.59%	81,042	79,138	-2.3%	82,606	4.4%
Township	Pine River	2,451	18.75%	163,761	197,069	20.3%	207,095	5.1%
Township	Seville	2,375	7.13%	165,350	178,578	8.0%	192,864	8.0%
Township	Sumner	1,911	6.23%	147,454	159,250	8.0%	171,990	8.0%
Township	Washington	909	-11.66%	76,514	74,576	-2.5%	74,640	0.1%
Township	Wheeler	1,446	-10.63%	119,934	116,896	-2.5%	112,788	-3.5%
City	Alma	9,275	2.67%	1,309,999	1,413,086	7.9%	1,450,627	2.7%
City	Ithaca	3,064	2.30%	399,174	431,108	8.0%	455,381	5.6%
City	St Louis	4,457	9.70%	486,751	525,691	8.0%	567,746	8.0%
Village	Ashley	526	1.54%	56,233	60,732	8.0%	65,591	8.0%
Village	Breckenridge	1,339	2.37%	164,799	177,983	8.0%	192,222	8.0%
Village	Perrinton	439	11.70%	39,816	50,538	26.9%	52,698	4.3%
Hillsdale County		46,497	7.14%	944,241	1,014,199	7.4%	1,005,347	-0.9%
Township	Adams	1,984	8.59%	135,131	145,941	8.0%	157,178	7.7%
Township	Allen	1,406	16.10%	92,677	107,376	15.9%	112,205	4.5%
Township	Amboy	1,224	25.15%	71,578	89,897	25.6%	94,039	4.6%
Township	Cambria	2,546	7.34%	175,286	189,309	8.0%	202,488	7.0%
Township	Camden	1,152	3.41%	84,306	87,256	3.5%	90,943	4.2%
Township	Fayette	1,013	11.69%	68,914	74,631	8.3%	77,548	3.9%
Township	Hillsdale	1,965	10.33%	131,435	147,531	12.2%	155,637	5.5%
Township	Jefferson	3,141	1.88%	228,482	243,861	6.7%	255,697	4.9%
Township	Litchfield	969	1.25%	75,261	78,093	3.8%	81,449	4.3%
Township	Moscow	1,445	6.80%	100,110	108,119	8.0%	115,477	6.8%
Township	Pittsford	1,600	0.31%	117,629	121,890	3.6%	128,024	5.0%
Township	Ransom	982	7.79%	67,551	72,955	8.0%	78,791	8.0%
Township	Reading	1,781	0.74%	129,603	132,007	1.9%	138,109	4.6%
Township	Scipio	1,822	23.19%	109,355	141,065	29.0%	148,256	5.1%
Township	Somerset	4,277	25.20%	262,044	322,928	23.2%	337,124	4.4%
Township	Wheatland	1,258	2.69%	93,374	99,975	7.1%	104,075	4.1%
Township	Woodbridge	1,337	15.26%	85,576	103,651	21.1%	109,013	5.2%
Township	Wright	1,198	-2.44%	90,755	89,789	-1.1%	93,648	4.3%
City	Hillsdale	8,203	0.74%	1,077,959	1,160,881	7.7%	1,181,029	1.7%
City	Litchfield	1,458	10.71%	169,895	176,785	4.1%	178,084	0.7%
City	Reading	1,134	0.62%	128,963	139,280	8.0%	150,422	8.0%
Village	Allen	225	11.94%	15,162	18,305	20.7%	19,287	5.4%
Village	Camden	550	14.11%	53,172	67,337	26.6%	69,646	3.4%
Village	Jonesville	2,337	2.37%	283,411	295,459	4.3%	294,815	-0.2%

GENERAL REVENUE SHARING PAYMENTS TO LOCAL UNITS

APPENDIX B

Local Unit		2000		FY 1999-2000	FY 2000-01 Year-to-Date		FY 2001-02 Year-to-Date	
Type	Name	Population	% Change	Enacted Final	Enacted Final	% Change	Enacted Estimate	% Change
Village	Montgomery	386	-0.52%	39,080	42,206	8.0%	45,582	8.0%
Village	North Adams	514	0.39%	55,327	59,753	8.0%	63,519	6.3%
Village	Waldron	590	1.55%	66,293	71,596	8.0%	77,324	8.0%
Houghton County		35,874	1.24%	742,410	758,035	2.1%	751,205	-0.9%
Township	Adams	1,901	15.70%	124,269	152,361	22.6%	160,719	5.5%
Township	Calumet	3,787	1.50%	289,806	310,309	7.1%	326,217	5.1%
Township	Chassell	1,822	8.07%	136,893	147,844	8.0%	159,672	8.0%
Township	Duncan	280	-7.89%	23,908	23,302	-2.5%	23,203	-0.4%
Township	Elm River	169	6.29%	13,044	13,390	2.7%	13,851	3.4%
Township	Franklin	1,320	13.40%	88,891	111,259	25.2%	118,680	6.7%
Township	Hancock	408	42.16%	22,258	31,184	40.1%	32,635	4.7%
Township	Laird	634	8.93%	50,110	54,119	8.0%	58,449	8.0%
Township	Osceola	1,908	1.60%	148,528	160,410	8.0%	173,243	8.0%
Township	Portage	3,156	7.31%	244,486	264,045	8.0%	285,169	8.0%
Township	Quincy	251	12.56%	17,937	21,919	22.2%	22,909	4.5%
Township	Schoolcraft	782	-6.24%	62,277	60,699	-2.5%	62,331	2.7%
Township	Stanton	1,268	7.09%	100,575	108,621	8.0%	117,311	8.0%
Township	Torch Lake	1,860	19.77%	115,023	139,216	21.0%	145,796	4.7%
City	Hancock	4,323	-4.93%	521,928	563,682	8.0%	587,048	4.1%
City	Houghton	6,987	-6.65%	891,856	963,204	8.0%	1,024,238	6.3%
Village	Calumet	879	7.46%	126,358	136,467	8.0%	147,384	8.0%
Village	Copper City	205	3.54%	21,466	23,183	8.0%	25,038	8.0%
Village	Lake Linden	1,081	-10.14%	144,836	156,423	8.0%	163,203	4.3%
Village	Laurium	2,126	-6.26%	306,089	330,576	8.0%	357,022	8.0%
Village	South Range	727	-2.42%	89,822	97,008	8.0%	104,769	8.0%
Huron County		36,046	3.23%	800,600	829,776	3.6%	822,913	-0.8%
Township	Bingham	878	10.30%	65,797	70,082	6.5%	72,524	3.5%
Township	Bloomfield	535	-4.97%	47,930	46,716	-2.5%	46,355	-0.8%
Township	Brookfield	618	-6.65%	56,282	54,856	-2.5%	53,422	-2.6%
Township	Caseville	1,835	43.14%	97,714	132,848	36.0%	138,374	4.2%
Township	Chandler	501	-1.57%	46,389	45,214	-2.5%	45,389	0.4%
Township	Colfax	1,954	0.93%	162,424	165,935	2.2%	171,828	3.6%
Township	Dwight	579	-4.77%	50,084	48,815	-2.5%	48,791	-0.1%
Township	Fair Haven	1,259	0.72%	113,730	116,882	2.8%	121,082	3.6%
Township	Gore	139	11.20%	9,968	10,712	7.5%	11,094	3.6%
Township	Grant	833	7.07%	63,949	68,799	7.6%	71,479	3.9%
Township	Hume	801	12.18%	54,202	59,176	9.2%	61,603	4.1%
Township	Huron	423	12.50%	31,417	33,759	7.5%	34,878	3.3%
Township	Lake	996	24.50%	60,473	72,846	20.5%	75,897	4.2%
Township	Lincoln	690	-1.99%	58,354	56,876	-2.5%	58,341	2.6%
Township	Mckinley	503	-4.55%	44,754	43,620	-2.5%	43,294	-0.7%
Township	Meade	799	2.83%	65,516	66,377	1.3%	68,615	3.4%
Township	Oliver	763	4.95%	77,275	75,538	-2.2%	76,511	1.3%
Township	Paris	557	-10.74%	51,191	49,894	-2.5%	47,380	-5.0%
Township	Pte Aux Barques	10	-33.33%	1,388	1,353	-2.5%	1,285	-5.0%
Township	Port Austin	854	29.59%	54,352	65,761	21.0%	68,070	3.5%
Township	Rubicon	468	3.31%	38,179	38,183	0.0%	39,388	3.2%
Township	Sand Beach	1,470	8.25%	116,480	122,421	5.1%	126,392	3.2%

GENERAL REVENUE SHARING PAYMENTS TO LOCAL UNITS

APPENDIX B

Local Unit		2000		FY 1999-2000	FY 2000-01 Year-to-Date		FY 2001-02 Year-to-Date	
Type	Name	Population	% Change	Enacted Final	Enacted Final	% Change	Enacted Estimate	% Change
Township	Sebewaing	970	-4.34%	104,123	101,485	-2.5%	96,767	-4.6%
Township	Sheridan	736	6.05%	56,588	59,277	4.8%	61,539	3.8%
Township	Sherman	1,165	0.87%	103,149	101,064	-2.0%	103,822	2.7%
Township	Sigel	576	-3.84%	49,749	48,489	-2.5%	48,790	0.6%
Township	Verona	1,349	12.79%	99,744	109,698	10.0%	113,714	3.7%
Township	Winsor	837	1.45%	75,654	73,738	-2.5%	74,934	1.6%
City	Bad Axe	3,429	-0.64%	508,954	507,717	-0.2%	517,556	1.9%
City	Harbor Beach	1,837	-12.06%	313,210	305,276	-2.5%	289,895	-5.0%
Village	Caseville	888	3.62%	95,670	93,915	-1.8%	94,988	1.1%
Village	Elkton	863	-9.92%	135,692	132,255	-2.5%	127,739	-3.4%
Village	Kinde	534	12.90%	57,328	71,026	23.9%	73,590	3.6%
Village	Owendale	296	3.86%	36,801	39,745	8.0%	42,925	8.0%
Village	Pigeon	1,207	0.00%	147,591	148,627	0.7%	151,969	2.2%
Village	Port Austin	737	-9.57%	84,946	82,794	-2.5%	78,623	-5.0%
Village	Port Hope	310	-0.96%	32,871	33,547	2.1%	34,442	2.7%
Village	Sebewaing	1,974	2.65%	268,749	290,249	8.0%	301,444	3.9%
Village	Ubyly	873	6.33%	93,414	100,887	8.0%	108,938	8.0%
Ingham County		279,021	-0.94%	6,457,050	6,458,937	0.0%	6,405,810	-0.8%
Township	Alaiedon	3,498	10.24%	233,999	254,840	8.9%	266,376	4.5%
Township	Aurelius	3,318	23.53%	198,854	250,971	26.2%	262,375	4.5%
Township	Bunker Hill	1,979	4.82%	135,987	146,866	8.0%	157,230	7.1%
Township	Delhi	22,569	17.61%	1,765,258	2,158,284	22.3%	2,239,444	3.8%
Township	Ingham	1,632	8.44%	111,884	120,835	8.0%	128,752	6.6%
Township	Lansing	8,458	-5.17%	985,198	960,241	-2.5%	919,462	-4.2%
Township	Leroy	2,150	15.41%	143,444	162,989	13.6%	169,872	4.2%
Township	Leslie	2,327	9.35%	172,868	186,697	8.0%	201,529	7.9%
Township	Locke	1,671	9.86%	113,062	122,107	8.0%	131,295	7.5%
Township	Meridian	39,116	10.95%	3,291,663	3,623,263	10.1%	3,741,133	3.3%
Township	Onondaga	2,958	21.03%	181,802	228,576	25.7%	239,359	4.7%
Township	Stockbridge	2,175	22.95%	130,950	159,099	21.5%	165,628	4.1%
Township	Vevay	3,614	-1.47%	273,496	275,215	0.6%	287,532	4.5%
Township	Wheatfield	1,641	4.46%	116,312	122,439	5.3%	127,979	4.5%
Township	White Oak	1,177	9.59%	79,689	86,064	8.0%	92,474	7.4%
Township	Williamstown	4,834	12.81%	317,051	356,600	12.5%	372,240	4.4%
City	East Lansing	46,525	-8.89%	6,502,385	7,016,611	7.9%	7,204,839	2.7%
City	Lansing	119,128	-6.43%	21,075,599	21,458,757	1.8%	21,761,943	1.4%
City	Leslie	2,044	-6.24%	316,640	333,264	5.3%	340,693	2.2%
City	Mason	6,415	-1.73%	742,257	756,844	2.0%	762,165	0.7%
City	Williamston	3,441	17.76%	358,345	406,232	13.4%	411,657	1.3%
Village	Dansville	429	-1.83%	41,618	44,947	8.0%	47,048	4.7%
Village	Stockbridge	1,260	4.83%	134,203	143,317	6.8%	142,383	-0.7%
Village	Webberville	1,503	-11.48%	182,894	179,916	-1.6%	184,574	2.6%
Ionia County		58,895	7.90%	1,187,031	1,283,276	8.1%	1,272,063	-0.9%
Township	Berlin	1,829	10.85%	121,911	135,869	11.4%	141,977	4.5%
Township	Boston	3,635	27.45%	210,487	268,633	27.6%	280,931	4.6%
Township	Campbell	1,926	32.46%	121,316	159,968	31.9%	165,899	3.7%
Township	Danby	2,696	13.71%	176,170	207,682	17.9%	217,076	4.5%
Township	Easton	2,835	15.24%	182,619	221,646	21.4%	232,827	5.0%

GENERAL REVENUE SHARING PAYMENTS TO LOCAL UNITS

APPENDIX B

Local Unit		2000		FY 1999-2000	FY 2000-01 Year-to-Date		FY 2001-02 Year-to-Date	
Type	Name	Population	% Change	Enacted Final	Enacted Final	% Change	Enacted Estimate	% Change
Township	Ionia	3,637	17.21%	230,267	282,955	22.9%	297,032	5.0%
Township	Keene	1,660	20.64%	101,558	126,440	24.5%	132,264	4.6%
Township	Lyons	1,558	19.11%	102,918	119,713	16.3%	124,569	4.1%
Township	North Plains	1,014	6.96%	70,039	75,642	8.0%	80,856	6.9%
Township	Odessa	1,764	8.29%	131,323	138,661	5.6%	143,674	3.6%
Township	Orange	1,040	-0.67%	77,103	77,231	0.2%	80,842	4.7%
Township	Orleans	2,736	7.38%	189,065	204,190	8.0%	220,525	8.0%
Township	Otisco	2,243	20.40%	152,088	184,367	21.2%	192,158	4.2%
Township	Portland	2,460	3.23%	180,200	188,378	4.5%	196,951	4.6%
Township	Ronald	1,903	10.96%	127,315	149,786	17.6%	157,630	5.2%
Township	Sebewa	1,202	3.62%	95,614	102,487	7.2%	106,728	4.1%
City	Belding	5,877	-1.54%	813,317	878,382	8.0%	917,644	4.5%
City	Ionia	8,904	6.19%	1,089,745	1,176,925	8.0%	1,271,079	8.0%
City	Portland	3,789	-2.57%	548,667	567,095	3.4%	574,582	1.3%
Village	Clarksville	317	-11.94%	38,621	38,875	0.7%	39,783	2.3%
Village	Hubbardston	394	-2.48%	38,026	41,068	8.0%	44,353	8.0%
Village	Lake Odessa	2,272	0.71%	258,998	279,718	8.0%	289,463	3.5%
Village	Lyons	726	-11.89%	102,279	104,745	2.4%	107,041	2.2%
Village	Muir	634	-4.95%	79,766	86,147	8.0%	91,169	5.8%
Village	Pewamo	560	7.69%	55,082	59,489	8.0%	64,248	8.0%
Village	Saranac	1,326	-9.24%	179,685	183,189	2.0%	185,939	1.5%
Iosco County		27,313	-9.49%	618,050	566,972	-8.3%	561,771	-0.9%
Township	Alabaster	503	27.66%	32,750	39,079	19.3%	40,433	3.5%
Township	Ausable	2,230	-3.55%	205,740	200,528	-2.5%	200,639	0.1%
Township	Baldwin	1,726	3.35%	136,690	137,725	0.8%	142,574	3.5%
Township	Burleigh	775	11.51%	56,679	63,896	12.7%	66,621	4.3%
Township	Grant	1,560	35.18%	92,724	120,481	29.9%	125,457	4.1%
Township	Oscoda	7,248	-39.39%	1,067,338	1,040,300	-2.5%	987,886	-5.0%
Township	Plainfield	4,292	22.98%	267,343	323,296	20.9%	337,448	4.4%
Township	Reno	656	14.69%	43,688	50,174	14.8%	52,474	4.6%
Township	Sherman	493	-1.79%	38,867	38,364	-1.3%	39,966	4.2%
Township	Tawas	1,684	14.95%	114,271	134,728	17.9%	140,466	4.3%
Township	Wilber	740	15.99%	49,836	57,057	14.5%	59,332	4.0%
City	East Tawas	2,951	2.22%	351,402	367,231	4.5%	374,332	1.9%
City	Tawas	1,979	0.05%	251,846	254,064	0.9%	254,676	0.2%
City	Whittemore	476	2.81%	47,574	51,380	8.0%	55,490	8.0%
Iron County		13,004	-1.22%	277,476	276,846	-0.2%	274,371	-0.9%
Township	Bates	1,021	5.69%	83,902	88,267	5.2%	91,140	3.3%
Township	Crystal Falls	1,722	6.69%	149,569	152,668	2.1%	156,792	2.7%
Township	Hematite	352	-3.83%	33,835	32,978	-2.5%	32,945	-0.1%
Township	Iron River	1,255	4.76%	100,899	105,386	4.4%	109,112	3.5%
Township	Mansfield	243	-2.02%	20,630	20,107	-2.5%	20,287	0.9%
Township	Mastodon	470	8.05%	36,088	37,259	3.2%	38,468	3.2%
Township	Stambaugh	1,248	5.23%	99,559	102,181	2.6%	105,639	3.4%
City	Caspian	997	-3.30%	140,668	151,921	8.0%	164,075	8.0%
City	Crystal Falls	1,773	-7.22%	236,521	255,443	8.0%	275,878	8.0%
City	Gaastra	339	-9.84%	52,648	56,860	8.0%	61,409	8.0%
City	Iron River	1,929	-7.92%	305,946	314,338	2.7%	321,633	2.3%

GENERAL REVENUE SHARING PAYMENTS TO LOCAL UNITS

APPENDIX B

Local Unit		2000		FY 1999-2000	FY 2000-01 Year-to-Date		FY 2001-02 Year-to-Date	
Type	Name	Population	% Change	Enacted Final	Enacted Final	% Change	Enacted Estimate	% Change
City	Stambaugh	1,243	-5.76%	178,112	192,361	8.0%	207,750	8.0%
Village	Alpha	198	-9.59%	28,557	30,842	8.0%	33,309	8.0%
Village	Mineral Hills	214	7.00%	26,412	28,525	8.0%	30,807	8.0%
Isabella County		63,180	15.92%	1,150,452	1,333,409	15.9%	1,321,379	-0.9%
Township	Broomfield	1,293	18.41%	87,792	96,668	10.1%	101,069	4.6%
Township	Chippewa	4,617	11.79%	308,416	373,614	21.1%	393,603	5.4%
Township	Coe	1,457	-6.24%	114,864	111,954	-2.5%	113,147	1.1%
Township	Coldwater	737	0.68%	54,228	56,219	3.7%	58,823	4.6%
Township	Deerfield	3,081	18.59%	198,841	238,710	20.1%	248,722	4.2%
Township	Denver	1,147	12.56%	75,671	90,427	19.5%	95,183	5.3%
Township	Fremont	1,358	11.59%	95,399	109,358	14.6%	114,706	4.9%
Township	Gilmore	1,376	28.36%	79,242	104,016	31.3%	109,247	5.0%
Township	Isabella	1,766	4.37%	125,600	135,648	8.0%	143,813	6.0%
Township	Lincoln	1,936	7.92%	133,423	144,097	8.0%	155,625	8.0%
Township	Nottawa	2,278	15.75%	146,021	175,106	19.9%	183,592	4.8%
Township	Rolland	1,210	6.33%	88,092	95,139	8.0%	102,727	8.0%
Township	Sherman	1,700	35.67%	119,314	128,270	7.5%	133,781	4.3%
Township	Union	7,615	48.59%	414,663	624,369	50.6%	648,537	3.9%
Township	Vernon	1,342	3.95%	95,814	103,479	8.0%	108,848	5.2%
Township	Wise	1,301	5.52%	98,602	106,490	8.0%	114,753	7.8%
City	Clare						<i>Split Unit: See Clare in Clare County</i>	
City	Mt Pleasant	25,775	11.20%	2,836,722	3,604,189	27.1%	3,745,722	3.9%
Village	Lake Isabella	1,243	92.41%	44,751	89,795	100.7%	94,386	5.1%
Village	Rosebush	379	13.81%	26,851	32,826	22.3%	34,422	4.9%
Village	Shepherd	1,536	8.70%	155,610	168,059	8.0%	181,504	8.0%
Jackson County		154,831	5.94%	3,420,237	3,621,025	5.9%	3,591,543	-0.8%
Township	Blackman	19,379	13.25%	1,419,078	1,686,978	18.9%	1,763,721	4.5%
Township	Columbia	6,028	14.75%	407,103	459,240	12.8%	479,091	4.3%
Township	Concord	1,591	8.67%	112,588	121,595	8.0%	126,620	4.1%
Township	Grass Lake	3,504	22.05%	222,789	266,265	19.5%	276,606	3.9%
Township	Hanover	3,368	4.30%	246,867	260,894	5.7%	272,484	4.4%
Township	Henrietta	4,483	16.68%	284,043	341,801	20.3%	357,880	4.7%
Township	Leoni	13,459	-0.10%	1,075,570	1,109,926	3.2%	1,157,592	4.3%
Township	Liberty	2,903	18.39%	186,955	222,088	18.8%	231,922	4.4%
Township	Napoleon	6,962	10.98%	463,527	525,104	13.3%	551,387	5.0%
Township	Norvell	2,922	9.97%	204,471	220,829	8.0%	233,836	5.9%
Township	Parma	2,445	7.85%	168,569	182,055	8.0%	196,619	8.0%
Township	Pulaski	1,931	6.33%	137,508	148,509	8.0%	160,390	8.0%
Township	Rives	4,725	17.36%	298,108	366,868	23.1%	385,032	5.0%
Township	Sandstone	3,145	15.84%	200,399	234,544	17.0%	245,651	4.7%
Township	Spring Arbor	7,577	9.19%	516,473	557,791	8.0%	602,414	8.0%
Township	Springport	1,478	6.87%	111,632	120,563	8.0%	128,869	6.9%
Township	Summit	21,534	1.91%	1,578,044	1,704,288	8.0%	1,830,297	7.4%
Township	Tompkins	2,758	18.83%	171,922	212,859	23.8%	223,723	5.1%
Township	Waterloo	2,997	11.00%	207,921	232,507	11.8%	242,205	4.2%
City	Jackson	36,218	-2.98%	6,361,943	6,741,026	6.0%	6,810,986	1.0%
Village	Brooklyn	1,176	14.51%	128,413	142,181	10.7%	146,305	2.9%
Village	Cement City						<i>Split Unit: See Cement City in Lenawee County</i>	

GENERAL REVENUE SHARING PAYMENTS TO LOCAL UNITS

APPENDIX B

Local Unit		2000		FY 1999-2000	FY 2000-01 Year-to-Date		FY 2001-02 Year-to-Date	
Type	Name	Population	% Change	Enacted Final	Enacted Final	% Change	Enacted Estimate	% Change
Village	Concord	1,101	16.63%	113,225	137,906	21.8%	140,350	1.8%
Village	Grass Lake	1,082	19.82%	89,492	109,677	22.6%	111,790	1.9%
Village	Hanover	424	-11.85%	46,407	46,982	1.2%	48,715	3.7%
Village	Parma	907	12.11%	71,931	88,278	22.7%	92,255	4.5%
Village	Springport	704	-0.42%	91,099	98,387	8.0%	106,258	8.0%
Kalamazoo County		238,359	6.88%	5,205,163	5,553,067	6.7%	5,507,681	-0.8%
Township	Alamo	3,820	16.61%	258,816	303,008	17.1%	315,579	4.1%
Township	Brady	3,581	14.26%	238,503	271,195	13.7%	283,083	4.4%
Township	Charleston	1,781	1.42%	132,704	135,083	1.8%	140,768	4.2%
Township	Climax	1,621	4.99%	122,169	127,332	4.2%	132,406	4.0%
Township	Comstock	13,851	17.13%	1,059,553	1,226,690	15.8%	1,290,028	5.2%
Township	Cooper	8,754	3.70%	657,423	703,487	7.0%	734,278	4.4%
Township	Kalamazoo	21,675	3.33%	2,496,685	2,696,420	8.0%	2,833,112	5.1%
Township	Oshtemo	17,003	26.88%	1,234,172	1,483,765	20.2%	1,527,431	2.9%
Township	Pavilion	5,829	5.98%	407,581	440,187	8.0%	467,418	6.2%
Township	Prairie Ronde	2,086	52.82%	102,141	153,110	49.9%	160,259	4.7%
Township	Richland	5,898	27.28%	364,953	451,659	23.8%	470,201	4.1%
Township	Ross	4,180	9.08%	293,244	313,863	7.0%	326,776	4.1%
Township	Schoolcraft	4,035	9.20%	277,497	298,613	7.6%	311,226	4.2%
Township	Texas	10,919	41.60%	583,950	813,253	39.3%	849,617	4.5%
Township	Wakeshma	1,414	2.61%	101,938	108,420	6.4%	113,382	4.6%
City	Galesburg	1,988	6.71%	186,608	201,537	8.0%	217,660	8.0%
City	Kalamazoo	76,901	-3.74%	12,557,592	12,870,505	2.5%	13,034,828	1.3%
City	Parchment	1,936	-1.12%	234,088	228,158	-2.5%	225,980	-1.0%
City	Portage	44,897	9.39%	4,570,538	4,835,724	5.8%	4,935,630	2.1%
Village	Augusta	899	-3.02%	87,732	91,904	4.8%	95,256	3.6%
Village	Climax	791	16.84%	69,742	86,416	23.9%	89,711	3.8%
Village	Richland	593	27.53%	49,610	56,997	14.9%	58,168	2.1%
Village	Schoolcraft	1,587	4.61%	179,982	192,042	6.7%	195,150	1.6%
Village	Vicksburg	2,320	4.69%	274,358	285,414	4.0%	288,836	1.2%
Kalkaska County		16,551	22.77%	279,467	343,074	22.8%	339,923	-0.9%
Township	Bear Lake	746	16.74%	51,799	57,898	11.8%	60,001	3.6%
Township	Blue Lake	428	13.23%	27,839	30,440	9.3%	31,733	4.2%
Township	Boardman	1,373	27.60%	88,314	117,352	32.9%	122,414	4.3%
Township	Clearwater	2,382	21.59%	147,435	178,480	21.1%	186,406	4.4%
Township	Coldsprings	1,449	35.04%	83,507	109,336	30.9%	114,088	4.3%
Township	Excelsior	855	19.75%	55,820	65,472	17.3%	68,256	4.3%
Township	Garfield	794	33.22%	45,074	58,905	30.7%	61,539	4.5%
Township	Kalkaska	2,604	12.39%	171,559	189,801	10.6%	198,464	4.6%
Township	Oliver	263	-9.62%	21,469	20,925	-2.5%	20,555	-1.8%
Township	Orange	1,176	32.88%	67,909	94,228	38.8%	98,945	5.0%
Township	Rapid River	1,005	34.72%	59,652	77,488	29.9%	80,706	4.2%
Township	Springfield	1,270	45.81%	66,490	98,730	48.5%	103,212	4.5%
Village	Kalkaska	2,206	13.95%	198,498	222,968	12.3%	233,475	4.7%
Kent County		573,750	14.72%	11,354,104	12,913,674	13.7%	12,804,427	-0.8%
Township	Ada	9,882	30.40%	607,502	753,213	24.0%	782,341	3.9%
Township	Algoma	7,596	38.21%	428,066	582,625	36.1%	604,299	3.7%

GENERAL REVENUE SHARING PAYMENTS TO LOCAL UNITS

APPENDIX B

Local Unit		2000		FY 1999-2000	FY 2000-01 Year-to-Date		FY 2001-02 Year-to-Date	
Type	Name	Population	% Change	Enacted Final	Enacted Final	% Change	Enacted Estimate	% Change
Township	Alpine	13,976	41.70%	768,006	1,101,086	43.4%	1,150,337	4.5%
Township	Bowne	2,743	43.84%	162,404	218,615	34.6%	226,454	3.6%
Township	Byron	17,553	32.63%	1,038,877	1,401,249	34.9%	1,465,775	4.6%
Township	Caledonia	7,862	46.43%	430,908	599,097	39.0%	622,662	3.9%
Township	Cannon	12,075	52.31%	618,243	915,547	48.1%	955,254	4.3%
Township	Cascade	15,107	17.39%	1,055,314	1,183,942	12.2%	1,225,827	3.5%
Township	Courtland	5,817	47.27%	307,751	443,270	44.0%	462,427	4.3%
Township	Gaines	20,112	38.39%	1,099,317	1,621,906	47.5%	1,692,223	4.3%
Township	Grand Rapids	14,056	30.63%	832,572	1,062,327	27.6%	1,106,663	4.2%
Township	Grattan	3,551	23.47%	223,950	272,454	21.7%	283,818	4.2%
Township	Lowell	5,219	9.32%	360,986	389,865	8.0%	421,054	8.0%
Township	Nelson	3,700	25.42%	226,907	288,820	27.3%	301,898	4.5%
Township	Oakfield	5,058	31.65%	290,418	389,756	34.2%	407,565	4.6%
Township	Plainfield	30,195	21.04%	2,035,597	2,528,800	24.2%	2,640,604	4.4%
Township	Solon	4,662	27.80%	279,755	362,454	29.6%	381,557	5.3%
Township	Sparta	4,779	6.70%	336,788	356,521	5.9%	371,790	4.3%
Township	Spencer	3,681	15.61%	248,475	292,178	17.6%	304,640	4.3%
Township	Tyrone	3,067	14.91%	211,705	241,469	14.1%	251,440	4.1%
Township	Vergennes	3,611	44.90%	187,835	267,016	42.2%	278,995	4.5%
City	Cedar Springs	3,112	19.69%	303,205	384,397	26.8%	382,759	-0.4%
City	East Grand Rapids	10,764	-0.40%	1,233,965	1,202,706	-2.5%	1,214,755	1.0%
City	Grand Rapids	197,215	4.55%	24,990,793	26,990,056	8.0%	29,028,103	7.6%
City	Grandville	16,263	4.09%	1,563,223	1,601,742	2.5%	1,633,372	2.0%
City	Kentwood	45,255	19.64%	3,425,096	4,076,237	19.0%	4,226,577	3.7%
City	Lowell	4,013	0.75%	505,085	508,317	0.6%	515,001	1.3%
City	Rockford	4,626	23.36%	463,193	507,485	9.6%	512,915	1.1%
City	Walker	21,842	26.41%	1,752,225	2,091,017	19.3%	2,150,561	2.8%
City	Wyoming	69,368	8.57%	7,197,064	7,663,753	6.5%	7,900,674	3.1%
Village	Caledonia	1,102	24.52%	85,213	98,908	16.1%	101,434	2.6%
Village	Casnovia	315	-16.22%	36,438	35,515	-2.5%	34,797	-2.0%
Village	Kent City	1,061	18.02%	91,074	111,725	22.7%	115,571	3.4%
Village	Sand Lake	492	7.89%	56,882	61,433	8.0%	65,774	7.1%
Village	Sparta	4,159	4.81%	525,386	539,574	2.7%	543,340	0.7%
Keweenaw County		2,299	35.16%	34,195	46,405	35.7%	45,967	-0.9%
Township	Allouez	1,427	12.01%	95,563	118,405	23.9%	123,715	4.5%
Township	Eagle Harbor	351	328.05%	6,888	25,052	263.7%	26,133	4.3%
Township	Grant	172	65.38%	9,693	13,783	42.2%	14,195	3.0%
Township	Houghton	132	144.44%	4,393	9,735	121.6%	10,171	4.5%
Township	Sherman	60	53.85%	3,379	4,777	41.4%	4,936	3.3%
Village	Ahmeek	157	6.08%	17,190	18,565	8.0%	20,050	8.0%
Lake County		11,077	29.31%	191,857	243,405	26.9%	241,296	-0.9%
Township	Chase	1,194	19.52%	74,293	93,356	25.7%	97,660	4.6%
Township	Cherry Valley	368	48.39%	18,302	27,502	50.3%	28,866	5.0%
Township	Dover	332	4.40%	24,767	26,250	6.0%	27,361	4.2%
Township	Eden	377	60.43%	19,018	28,775	51.3%	29,901	3.9%
Township	Elk	900	55.17%	43,946	65,703	49.5%	68,634	4.5%
Township	Ellsworth	712	42.97%	39,104	56,733	45.1%	59,603	5.1%
Township	Lake	849	21.29%	52,624	61,920	17.7%	64,503	4.2%

GENERAL REVENUE SHARING PAYMENTS TO LOCAL UNITS

APPENDIX B

Local Unit		2000		FY 1999-2000	FY 2000-01 Year-to-Date		FY 2001-02 Year-to-Date	
Type	Name	Population	% Change	Enacted Final	Enacted Final	% Change	Enacted Estimate	% Change
Township	Newkirk	489	33.24%	28,722	37,301	29.9%	38,893	4.3%
Township	Peacock	445	29.36%	27,060	33,741	24.7%	35,106	4.0%
Township	Pinora	643	55.31%	32,549	50,550	55.3%	52,858	4.6%
Township	Pleasant Plains	953	8.42%	74,862	78,165	4.4%	80,697	3.2%
Township	Sauble	323	8.75%	22,965	24,470	6.6%	25,446	4.0%
Township	Sweetwater	238	6.73%	16,999	18,054	6.2%	18,859	4.5%
Township	Webber	1,186	62.02%	63,127	93,705	48.4%	96,311	2.8%
Township	Yates	714	22.05%	53,728	62,657	16.6%	64,419	2.8%
Village	Baldwin	1,015	26.24%	94,461	127,869	35.4%	130,971	2.4%
Village	Luther	339	-1.17%	34,795	37,579	8.0%	40,585	8.0%
Lapeer County		87,375	17.54%	1,542,694	1,816,101	17.7%	1,799,464	-0.9%
Township	Almont	3,238	40.42%	182,749	243,474	33.2%	252,954	3.9%
Township	Arcadia	3,197	30.60%	184,446	243,422	32.0%	254,312	4.5%
Township	Attica	4,678	20.78%	303,064	368,830	21.7%	384,021	4.1%
Township	Burlington	1,078	-5.52%	86,874	84,673	-2.5%	87,212	3.0%
Township	Burnside	1,920	9.53%	132,897	143,529	8.0%	154,375	7.6%
Township	Deerfield	5,736	16.99%	370,627	447,553	20.8%	467,883	4.5%
Township	Dryden	3,809	37.46%	236,954	303,539	28.1%	313,808	3.4%
Township	Elba	5,462	20.41%	358,917	426,383	18.8%	444,249	4.2%
Township	Goodland	1,734	17.48%	114,863	134,826	17.4%	140,414	4.1%
Township	Hadley	4,655	21.54%	293,961	351,446	19.6%	366,173	4.2%
Township	Imlay	2,713	26.60%	163,570	207,459	26.8%	216,994	4.6%
Township	Lapeer	5,078	12.37%	343,288	386,412	12.6%	403,598	4.4%
Township	Marathon	3,510	19.67%	222,281	269,693	21.3%	282,113	4.6%
Township	Mayfield	7,659	7.37%	544,768	588,349	8.0%	628,732	6.9%
Township	Metamora	3,677	18.73%	259,120	293,133	13.1%	302,978	3.4%
Township	North Branch	2,568	29.50%	158,970	201,693	26.9%	208,500	3.4%
Township	Oregon	6,166	4.28%	449,087	481,968	7.3%	503,105	4.4%
Township	Rich	1,412	21.51%	88,349	108,956	23.3%	114,020	4.6%
City	Brown City				<i>Split Unit: See Brown City in Sanilac County</i>			
City	Imlay City	3,869	32.45%	459,061	532,208	15.9%	530,101	-0.4%
City	Lapeer	8,543	16.55%	863,112	1,005,963	16.6%	1,028,986	2.3%
Village	Almont	2,803	19.07%	290,999	348,393	19.7%	352,394	1.1%
Village	Clifford	324	-8.47%	47,313	49,741	5.1%	50,826	2.2%
Village	Columbiaville	815	-12.74%	110,265	111,981	1.6%	114,573	2.3%
Village	Dryden	815	29.78%	69,809	87,291	25.0%	88,835	1.8%
Village	Metamora	507	13.42%	45,625	49,411	8.3%	50,223	1.6%
Village	North Branch	1,027	0.39%	123,635	133,526	8.0%	135,112	1.2%
Village	Otter Lake	437	-7.81%	50,688	54,103	6.7%	55,799	3.1%
Leelanau County		21,109	27.80%	336,141	430,577	28.1%	426,558	-0.9%
Township	Bingham	2,425	18.24%	152,034	177,448	16.7%	185,101	4.3%
Township	Centerville	1,095	30.98%	61,144	78,639	28.6%	82,179	4.5%
Township	Cleveland	1,040	32.82%	56,938	73,818	29.6%	77,155	4.5%
Township	Elmwood	4,264	24.42%	263,821	319,992	21.3%	333,272	4.2%
Township	Empire	707	40.56%	37,896	50,623	33.6%	52,738	4.2%
Township	Glen Arbor	788	22.36%	50,239	58,090	15.6%	60,263	3.7%
Township	Kasson	1,577	38.94%	84,486	115,954	37.2%	121,371	4.7%
Township	Leelanau	1,491	36.91%	83,141	107,668	29.5%	112,025	4.0%

GENERAL REVENUE SHARING PAYMENTS TO LOCAL UNITS

APPENDIX B

Local Unit		2000		FY 1999-2000	FY 2000-01 Year-to-Date		FY 2001-02 Year-to-Date	
Type	Name	Population	% Change	Enacted Final	Enacted Final	% Change	Enacted Estimate	% Change
Township	Leland	2,023	23.96%	121,229	144,748	19.4%	150,881	4.2%
Township	Solon	1,542	21.61%	92,951	112,632	21.2%	117,757	4.6%
Township	Suttons Bay	2,393	50.60%	118,166	172,037	45.6%	179,790	4.5%
City	Traverse City	<i>Split Unit: See Traverse City in Grand Traverse County</i>						
Village	Empire	378	6.48%	33,927	34,311	1.1%	35,069	2.2%
Village	Northport	648	7.11%	55,299	56,813	2.7%	58,302	2.6%
Village	Suttons Bay	589	4.99%	50,696	50,949	0.5%	52,270	2.6%
Lenawee County		97,643	7.46%	2,016,047	2,168,337	7.6%	2,149,747	-0.9%
Township	Adrian	5,749	34.57%	319,491	429,225	34.3%	448,330	4.5%
Township	Blissfield	698	3.10%	58,557	57,539	-1.7%	59,108	2.7%
Township	Cambridge	4,486	23.65%	281,698	337,320	19.7%	349,332	3.6%
Township	Clinton	1,331	23.01%	103,824	115,992	11.7%	118,719	2.4%
Township	Deerfield	765	3.80%	61,950	62,240	0.5%	64,224	3.2%
Township	Dover	1,634	1.62%	119,432	128,120	7.3%	134,327	4.8%
Township	Fairfield	1,756	-6.74%	159,428	155,389	-2.5%	158,379	1.9%
Township	Franklin	2,939	18.84%	193,867	226,605	16.9%	235,713	4.0%
Township	Hudson	1,403	7.92%	101,919	110,073	8.0%	115,386	4.8%
Township	Macon	1,448	1.90%	108,121	110,514	2.2%	115,218	4.3%
Township	Madison	7,101	35.41%	430,054	583,349	35.6%	606,675	4.0%
Township	Medina	1,227	-10.31%	109,000	106,239	-2.5%	103,385	-2.7%
Township	Ogden	1,063	-7.24%	93,785	91,409	-2.5%	89,822	-1.7%
Township	Palmyra	2,360	5.73%	165,187	178,099	7.8%	186,631	4.8%
Township	Raisin	6,507	15.21%	428,329	505,748	18.1%	527,075	4.2%
Township	Ridgeway	881	0.34%	74,795	73,328	-2.0%	75,540	3.0%
Township	Riga	1,439	-2.18%	119,708	116,676	-2.5%	120,244	3.1%
Township	Rollin	2,721	-5.88%	219,266	213,712	-2.5%	214,314	0.3%
Township	Rome	1,772	8.58%	126,484	136,603	8.0%	145,735	6.7%
Township	Seneca	1,303	1.09%	95,455	99,063	3.8%	103,637	4.6%
Township	Tecumseh	1,881	22.22%	115,186	139,548	21.2%	145,826	4.5%
Township	Woodstock	2,874	15.42%	196,449	221,506	12.8%	230,109	3.9%
City	Adrian	21,426	-2.72%	2,791,155	2,960,644	6.1%	3,024,310	2.2%
City	Hudson	2,499	-3.14%	345,163	351,451	1.8%	360,598	2.6%
City	Morenci	2,398	2.39%	295,787	319,450	8.0%	345,006	8.0%
City	Tecumseh	8,574	14.90%	952,093	1,033,646	8.6%	1,046,113	1.2%
Village	Addison	627	-0.79%	72,238	76,818	6.3%	78,379	2.0%
Village	Blissfield	3,223	1.61%	386,895	409,200	5.8%	417,451	2.0%
Village	Britton	699	0.72%	71,799	77,543	8.0%	81,617	5.3%
Village	Cement City	452	-8.32%	47,875	50,706	5.9%	52,598	3.7%
Village	Clayton	326	-15.10%	38,413	38,002	-1.1%	39,247	3.3%
Village	Clinton	2,293	-7.35%	276,332	269,332	-2.5%	261,400	-2.9%
Village	Deerfield	1,005	9.00%	92,569	99,975	8.0%	107,973	8.0%
Village	Onsted	813	1.50%	77,236	83,415	8.0%	84,756	1.6%
Livingston County		156,508	35.82%	2,363,770	3,206,191	35.6%	3,176,391	-0.9%
Township	Brighton	17,673	19.29%	1,131,433	1,330,057	17.6%	1,386,917	4.3%
Township	Cohoctah	3,394	26.03%	212,188	265,896	25.3%	277,565	4.4%
Township	Conway	2,732	50.28%	144,066	212,841	47.7%	219,179	3.0%
Township	Deerfield	4,087	36.23%	231,791	309,702	33.6%	323,885	4.6%
Township	Genoa	15,901	46.96%	835,484	1,187,996	42.2%	1,237,006	4.1%

GENERAL REVENUE SHARING PAYMENTS TO LOCAL UNITS

APPENDIX B

Local Unit		2000		FY 1999-2000	FY 2000-01 Year-to-Date		FY 2001-02 Year-to-Date	
Type	Name	Population	% Change	Enacted Final	Enacted Final	% Change	Enacted Estimate	% Change
Township	Green Oak	15,403	35.59%	888,266	1,166,278	31.3%	1,215,635	4.2%
Township	Hamburg	20,512	58.42%	1,000,156	1,616,208	61.6%	1,694,792	4.9%
Township	Handy	4,032	41.97%	219,631	300,872	37.0%	313,693	4.3%
Township	Hartland	10,996	60.29%	532,652	824,259	54.7%	859,218	4.2%
Township	Howell	5,679	32.25%	354,724	447,569	26.2%	462,562	3.3%
Township	Iosco	3,039	93.94%	124,401	232,627	87.0%	240,589	3.4%
Township	Marion	6,757	37.39%	380,851	512,889	34.7%	532,623	3.8%
Township	Oceola	8,362	71.85%	387,991	637,145	64.2%	661,904	3.9%
Township	Putnam	5,359	17.01%	343,551	397,605	15.7%	414,597	4.3%
Township	Tyrone	8,459	23.42%	506,787	620,954	22.5%	650,118	4.7%
Township	Unadilla	3,190	8.17%	225,219	243,237	8.0%	262,336	7.9%
City	Brighton	6,701	17.85%	708,399	749,598	5.8%	756,434	0.9%
City	Howell	9,119	12.40%	1,054,361	1,083,149	2.7%	1,088,816	0.5%
Village	Fowlerville	2,972	12.24%	346,457	384,508	11.0%	389,629	1.3%
Village	Pinckney	2,141	33.56%	162,755	209,573	28.8%	214,144	2.2%
Luce County		6,557	15.06%	120,519	138,670	15.1%	137,423	-0.9%
Township	Columbus	215	-1.38%	15,984	16,005	0.1%	16,733	4.5%
Township	Lakefield	1,074	23.59%	63,813	79,370	24.4%	82,689	4.2%
Township	Mcmillan	1,261	15.90%	80,575	91,943	14.1%	96,075	4.5%
Township	Pentland	2,255	36.58%	122,795	180,545	47.0%	190,201	5.3%
Village	Newberry	1,752	-6.46%	239,989	259,188	8.0%	279,923	8.0%
Mackinac County		11,934	11.86%	218,929	246,128	12.4%	243,857	-0.9%
Township	Bois Blanc	71	20.34%	5,857	6,311	7.8%	6,431	1.9%
Township	Brevort	649	34.09%	42,889	53,936	25.8%	55,776	3.4%
Township	Clark	2,200	9.34%	166,668	175,051	5.0%	180,891	3.3%
Township	Garfield	1,251	8.22%	88,929	94,436	6.2%	98,236	4.0%
Township	Hendricks	183	13.66%	13,730	14,981	9.1%	15,478	3.3%
Township	Hudson	214	8.63%	16,181	16,880	4.3%	17,455	3.4%
Township	Marquette	659	19.82%	44,045	52,069	18.2%	54,036	3.8%
Township	Moran	1,080	28.88%	67,762	82,689	22.0%	85,841	3.8%
Township	Newton	356	-0.56%	26,654	26,021	-2.4%	27,097	4.1%
Township	Portage	1,055	18.54%	76,248	85,965	12.7%	88,759	3.3%
Township	St Ignace	1,024	9.87%	75,869	81,939	8.0%	88,494	8.0%
City	Mackinac Island	523	11.51%	50,168	51,377	2.4%	52,133	1.5%
City	St Ignace	2,669	4.14%	295,658	296,886	0.4%	302,616	1.9%
Macomb County		786,852	9.75%	15,816,019	17,344,038	9.7%	17,194,206	-0.9%
Township	Armada	3,673	24.80%	249,779	293,615	17.5%	303,550	3.4%
Township	Bruce	6,395	52.52%	381,191	520,354	36.5%	534,991	2.8%
Township	Chesterfield	37,405	44.39%	2,308,398	3,222,977	39.6%	3,344,237	3.8%
Township	Clinton	95,648	11.39%	8,365,531	9,634,697	15.2%	9,960,875	3.4%
Township	Harrison	24,461	-0.91%	2,231,627	2,264,844	1.5%	2,338,687	3.3%
Township	Lake	0	0.00%	0	0	0.0%	0	
Township	Lenox	4,746	54.64%	240,323	353,089	46.9%	367,926	4.2%
Township	Macomb	50,478	122.23%	1,857,120	4,067,514	119.0%	4,248,006	4.4%
Township	Ray	3,740	15.79%	280,629	310,544	10.7%	320,322	3.1%
Township	Richmond	3,416	35.13%	190,867	255,046	33.6%	266,084	4.3%
Township	Shelby	65,159	33.92%	4,790,904	6,104,940	27.4%	6,301,613	3.2%

GENERAL REVENUE SHARING PAYMENTS TO LOCAL UNITS

APPENDIX B

Local Unit		2000		FY 1999-2000	FY 2000-01 Year-to-Date		FY 2001-02 Year-to-Date	
Type	Name	Population	% Change	Enacted Final	Enacted Final	% Change	Enacted Estimate	% Change
Township	Washington	17,122	50.38%	911,415	1,350,925	48.2%	1,408,390	4.3%
City	Center Line	8,531	-5.48%	1,502,880	1,464,809	-2.5%	1,391,006	-5.0%
City	Eastpointe	34,077	-3.42%	4,436,793	4,720,683	6.4%	4,846,623	2.7%
City	Fraser	15,297	10.06%	1,783,146	1,818,236	2.0%	1,833,306	0.8%
City	Memphis	1,129	-7.53%	144,289	143,202	-0.8%	146,447	2.3%
City	Mt Clemens	16,631	-7.30%	2,819,836	2,748,404	-2.5%	2,716,005	-1.2%
City	New Baltimore	7,405	27.72%	672,299	770,887	14.7%	782,016	1.4%
City	Richmond	4,897	18.26%	592,793	632,064	6.6%	624,902	-1.1%
City	Roseville	48,129	-6.39%	6,367,299	6,222,742	-2.3%	6,325,707	1.7%
City	St Clair Shores	63,096	-7.36%	7,338,197	7,152,306	-2.5%	7,235,433	1.2%
City	Sterling Heights	124,471	5.65%	12,739,632	13,397,453	5.2%	13,705,957	2.3%
City	Utica	4,577	-9.92%	649,529	633,075	-2.5%	601,178	-5.0%
City	Warren	138,247	-4.57%	19,356,696	18,866,352	-2.5%	18,619,216	-1.3%
Village	Armada	1,573	1.61%	201,273	204,595	1.7%	206,756	1.1%
Village	Grosse Pte Shores				<i>Split Unit: See Grosse Pte Shores in Wayne County</i>			
Village	New Haven	3,071	31.75%	310,823	443,834	42.8%	458,221	3.2%
Village	Romeo	3,721	5.71%	578,861	564,197	-2.5%	535,771	-5.0%
Manistee County		24,150	13.66%	487,142	548,936	12.7%	544,338	-0.8%
Township	Arcadia	621	12.30%	44,435	48,199	8.5%	49,853	3.4%
Township	Bear Lake	1,269	17.50%	82,581	95,598	15.8%	99,585	4.2%
Township	Brown	712	21.09%	44,123	53,641	21.6%	56,520	5.4%
Township	Cleon	700	42.57%	38,436	53,617	39.5%	56,066	4.6%
Township	Dickson	929	26.39%	58,488	72,271	23.6%	75,249	4.1%
Township	Filer	2,208	12.31%	156,292	169,836	8.7%	176,366	3.8%
Township	Manistee	2,946	18.84%	193,349	228,506	18.2%	239,367	4.8%
Township	Maple Grove	776	21.44%	55,442	64,215	15.8%	66,326	3.3%
Township	Marilla	362	35.07%	20,805	27,884	34.0%	29,066	4.2%
Township	Norman	1,676	40.96%	99,048	141,827	43.2%	147,282	3.8%
Township	Onekama	867	15.45%	57,317	63,923	11.5%	66,447	3.9%
Township	Pleasanton	817	42.58%	43,470	60,558	39.3%	63,261	4.5%
Township	Springdale	730	46.59%	37,197	54,197	45.7%	56,651	4.5%
Township	Stronach	804	16.86%	55,202	62,130	12.6%	64,778	4.3%
City	Manistee	6,586	-1.94%	996,885	999,565	0.3%	996,415	-0.3%
Village	Bear Lake	318	-6.19%	32,844	33,996	3.5%	35,022	3.0%
Village	Copemish	232	4.50%	23,105	24,953	8.0%	26,949	8.0%
Village	Eastlake	441	-6.77%	40,586	41,765	2.9%	43,753	4.8%
Village	Kaleva	509	5.17%	42,812	46,237	8.0%	49,936	8.0%
Village	Onekama	647	25.63%	46,794	59,888	28.0%	61,893	3.3%
Marquette County		64,034	-9.06%	1,492,187	1,379,025	-7.6%	1,366,831	-0.9%
Township	Champion	297	-14.16%	34,445	33,572	-2.5%	32,519	-3.1%
Township	Chocolay	6,115	1.49%	516,069	549,546	6.5%	572,263	4.1%
Township	Ely	2,010	3.50%	157,292	169,875	8.0%	179,932	5.9%
Township	Ewing	159	1.92%	13,169	13,205	0.3%	13,663	3.5%
Township	Forsyth	4,824	-45.03%	869,737	847,705	-2.5%	804,994	-5.0%
Township	Humboldt	469	-6.20%	43,890	42,778	-2.5%	42,203	-1.3%
Township	Ishpeming	3,522	0.09%	289,835	310,158	7.0%	324,154	4.5%
Township	Marquette	3,286	19.19%	261,453	290,752	11.2%	298,251	2.6%
Township	Michigamme	377	11.21%	34,944	35,950	2.9%	36,560	1.7%

GENERAL REVENUE SHARING PAYMENTS TO LOCAL UNITS

APPENDIX B

Local Unit		2000		FY 1999-2000	FY 2000-01 Year-to-Date		FY 2001-02 Year-to-Date	
Type	Name	Population	% Change	Enacted Final	Enacted Final	% Change	Enacted Estimate	% Change
Township	Negaunee	2,707	14.32%	212,703	248,161	16.7%	255,349	2.9%
Township	Powell	724	9.70%	52,685	56,020	6.3%	58,080	3.7%
Township	Republic	1,106	-5.47%	109,655	106,877	-2.5%	105,481	-1.3%
Township	Richmond	974	-11.05%	93,245	91,411	-2.0%	95,719	4.7%
Township	Sands	2,127	-21.11%	239,141	233,083	-2.5%	221,339	-5.0%
Township	Skandia	907	-2.79%	79,359	84,015	5.9%	87,787	4.5%
Township	Tilden	1,003	-0.69%	79,034	83,366	5.5%	87,590	5.1%
Township	Turin	131	-16.03%	12,461	12,145	-2.5%	11,533	-5.0%
Township	Wells	292	3.91%	24,356	24,171	-0.8%	24,852	2.8%
Township	West Branch	1,648	-26.46%	176,340	171,873	-2.5%	163,213	-5.0%
City	Ishpeming	6,686	-7.14%	1,152,628	1,231,393	6.8%	1,253,692	1.8%
City	Marquette	20,094	-6.57%	2,552,014	2,554,422	0.1%	2,616,465	2.4%
City	Negaunee	4,576	-3.48%	626,204	676,300	8.0%	724,660	7.2%
Mason County		28,166	10.59%	556,930	615,468	10.5%	610,106	-0.9%
Township	Amber	2,054	21.97%	129,042	155,347	20.4%	161,846	4.2%
Township	Branch	1,181	21.38%	74,203	90,142	21.5%	93,873	4.1%
Township	Custer	989	14.47%	66,290	76,812	15.9%	80,102	4.3%
Township	Eden	555	13.03%	37,494	42,460	13.2%	44,240	4.2%
Township	Freesoil	697	5.93%	50,318	54,072	7.5%	56,237	4.0%
Township	Grant	850	13.48%	56,938	64,182	12.7%	66,959	4.3%
Township	Hamlin	3,192	22.91%	192,373	234,026	21.7%	244,509	4.5%
Township	Logan	329	62.07%	16,085	24,663	53.3%	25,678	4.1%
Township	Meade	158	11.27%	11,315	12,214	7.9%	12,670	3.7%
Township	Pere Marquette	2,228	7.89%	166,399	171,427	3.0%	177,400	3.5%
Township	Riverton	1,335	19.73%	85,641	105,883	23.6%	110,953	4.8%
Township	Sheridan	969	15.77%	63,684	73,412	15.3%	76,541	4.3%
Township	Sherman	915	16.26%	60,391	71,823	18.9%	74,898	4.3%
Township	Summit	1,021	25.28%	61,935	74,166	19.7%	77,273	4.2%
Township	Victory	1,444	33.21%	83,127	113,705	36.8%	119,217	4.8%
City	Ludington	8,313	-2.11%	1,045,798	1,050,916	0.5%	1,064,574	1.3%
City	Scottville	1,266	-1.63%	190,417	202,936	6.6%	206,367	1.7%
Village	Custer	318	1.92%	24,936	26,931	8.0%	28,524	5.9%
Village	Fountain	175	6.06%	13,872	14,982	8.0%	16,181	8.0%
Village	Freesoil	177	19.59%	12,048	16,302	35.3%	17,089	4.8%
Mecosta County		40,519	8.68%	821,422	892,940	8.7%	885,226	-0.9%
Township	Aetna	1,734	34.00%	96,603	134,283	39.0%	141,299	5.2%
Township	Austin	1,415	28.64%	83,152	105,416	26.8%	110,242	4.6%
Township	Big Rapids	3,249	-3.16%	263,805	261,895	-0.7%	273,103	4.3%
Township	Chippewa	1,239	19.71%	83,339	97,904	17.5%	101,985	4.2%
Township	Colfax	1,975	3.13%	143,309	152,787	6.6%	159,757	4.6%
Township	Deerfield	1,445	40.16%	76,236	112,298	47.3%	118,018	5.1%
Township	Fork	1,297	29.44%	79,903	104,280	30.5%	109,246	4.8%
Township	Grant	680	5.59%	48,104	51,952	8.0%	54,549	5.0%
Township	Green	3,209	13.27%	212,796	252,586	18.7%	265,077	4.9%
Township	Hinton	1,035	4.02%	75,775	81,371	7.4%	85,176	4.7%
Township	Martiny	1,606	19.14%	99,866	119,404	19.6%	124,965	4.7%
Township	Mecosta	2,231	24.71%	140,420	178,141	26.9%	186,662	4.8%
Township	Millbrook	1,081	6.82%	85,092	91,899	8.0%	95,518	3.9%

GENERAL REVENUE SHARING PAYMENTS TO LOCAL UNITS

APPENDIX B

Local Unit		2000		FY 1999-2000	FY 2000-01 Year-to-Date		FY 2001-02 Year-to-Date	
Type	Name	Population	% Change	Enacted Final	Enacted Final	% Change	Enacted Estimate	% Change
Township	Morton	3,157	82.59%	134,015	229,723	71.4%	239,634	4.3%
Township	Sheridan	1,357	33.04%	75,601	105,132	39.1%	110,183	4.8%
Township	Wheatland	1,474	7.99%	113,057	122,102	8.0%	130,925	7.2%
City	Big Rapids	10,815	-12.24%	1,689,898	1,775,518	5.1%	1,815,276	2.2%
Village	Barryton	381	-3.05%	39,122	42,046	7.5%	43,640	3.8%
Village	Mecosta	440	11.96%	33,858	43,905	29.7%	46,044	4.9%
Village	Morley	495	-6.25%	53,663	57,470	7.1%	59,523	3.6%
Village	Stanwood	204	13.97%	19,035	24,049	26.3%	25,042	4.1%
Menominee County		25,309	1.60%	545,651	558,404	2.3%	553,586	-0.9%
Township	Cedarville	276	49.19%	13,854	20,087	45.0%	20,973	4.4%
Township	Daggett	470	-3.09%	40,503	39,814	-1.7%	41,229	3.6%
Township	Faithorn	214	0.47%	16,549	16,618	0.4%	17,285	4.0%
Township	Gourley	409	12.98%	30,254	35,141	16.2%	36,736	4.5%
Township	Harris	1,895	22.89%	121,467	161,853	33.2%	169,992	5.0%
Township	Holmes	296	1.37%	22,240	22,138	-0.5%	23,032	4.0%
Township	Ingallston	1,042	-1.23%	79,454	79,778	0.4%	83,272	4.4%
Township	Lake	576	-4.48%	45,340	44,191	-2.5%	45,772	3.6%
Township	Mellen	1,260	6.51%	89,564	96,729	8.0%	104,467	8.0%
Township	Menominee	3,939	-0.43%	299,746	314,435	4.9%	330,493	5.1%
Township	Meyer	1,036	11.16%	76,198	90,560	18.8%	94,866	4.8%
Township	Nadeau	935	-2.20%	75,076	75,543	0.6%	78,890	4.4%
Township	Spalding	1,331	4.80%	99,702	107,678	8.0%	114,061	5.9%
Township	Stephenson	716	3.02%	52,600	56,787	8.0%	59,614	5.0%
City	Menominee	9,114	-2.92%	1,353,083	1,439,951	6.4%	1,474,240	2.4%
City	Stephenson	875	-3.21%	78,984	85,303	8.0%	90,328	5.9%
Village	Carney	225	9.76%	14,501	15,547	7.2%	16,253	4.5%
Village	Daggett	270	3.85%	20,759	22,420	8.0%	24,214	8.0%
Village	Powers	430	1.42%	37,618	40,627	8.0%	43,877	8.0%
Midland County		82,826	9.54%	1,864,583	2,022,522	8.5%	2,006,751	-0.8%
Township	Edenville	2,528	6.80%	182,501	196,322	7.6%	204,557	4.2%
Township	Geneva	1,137	8.49%	80,998	87,478	8.0%	94,476	8.0%
Township	Greendale	1,788	19.60%	112,608	143,697	27.6%	150,673	4.9%
Township	Homer	3,924	-7.34%	329,703	321,351	-2.5%	333,185	3.7%
Township	Hope	1,286	5.41%	96,042	102,154	6.4%	106,355	4.1%
Township	Ingersoll	3,018	8.25%	209,513	226,274	8.0%	244,376	8.0%
Township	Jasper	1,145	4.47%	85,002	91,640	7.8%	95,989	4.7%
Township	Jerome	3,945	10.16%	281,004	311,248	10.8%	323,436	3.9%
Township	Larkin	4,514	25.81%	264,811	330,623	24.9%	345,548	4.5%
Township	Lee	4,411	9.81%	320,314	345,939	8.0%	373,614	8.0%
Township	Lincoln	2,277	26.01%	143,862	181,993	26.5%	189,519	4.1%
Township	Midland	2,297	3.42%	185,365	191,781	3.5%	197,737	3.1%
Township	Mills	1,871	14.43%	131,267	156,182	19.0%	162,901	4.3%
Township	Mt Haley	1,654	-0.12%	124,653	129,791	4.1%	135,747	4.6%
Township	Porter	1,270	11.40%	85,599	99,103	15.8%	104,019	5.0%
Township	Warren	2,107	16.28%	138,782	166,693	20.1%	174,747	4.8%
City	Coleman	1,296	4.77%	165,286	178,509	8.0%	192,790	8.0%
City	Midland	41,637	9.52%	4,105,229	4,333,135	5.6%	4,424,019	2.1%
Village	Sanford	943	6.07%	68,586	74,073	8.0%	78,194	5.6%

GENERAL REVENUE SHARING PAYMENTS TO LOCAL UNITS

APPENDIX B

Local Unit		2000		FY 1999-2000	FY 2000-01 Year-to-Date		FY 2001-02 Year-to-Date	
Type	Name	Population	% Change	Enacted Final	Enacted Final	% Change	Enacted Estimate	% Change
Missaukee County		14,466	19.14%	252,380	300,906	19.2%	298,152	-0.9%
Township	Aetna	491	18.03%	32,891	38,400	16.7%	39,906	3.9%
Township	Bloomfield	475	21.79%	30,534	37,035	21.3%	38,534	4.0%
Township	Butterfield	548	21.24%	37,287	43,827	17.5%	45,555	3.9%
Township	Caldwell	1,363	23.46%	85,607	108,109	26.3%	113,301	4.8%
Township	Clam Union	882	3.28%	67,604	71,006	5.0%	74,038	4.3%
Township	Enterprise	194	52.76%	10,668	14,918	39.8%	15,490	3.8%
Township	Forest	1,082	23.23%	67,092	86,201	28.5%	90,664	5.2%
Township	Holland	223	31.95%	12,816	16,498	28.7%	17,252	4.6%
Township	Lake	2,468	24.65%	151,257	185,048	22.3%	193,043	4.3%
Township	Norwich	646	27.92%	39,509	48,967	23.9%	51,268	4.7%
Township	Pioneer	460	18.56%	30,418	36,665	20.5%	38,299	4.5%
Township	Reeder	1,112	44.04%	58,556	86,647	48.0%	90,709	4.7%
Township	Richland	1,445	16.91%	94,149	113,841	20.9%	119,221	4.7%
Township	Riverside	1,050	23.09%	69,508	87,434	25.8%	91,332	4.5%
Township	West Branch	532	12.47%	35,862	41,445	15.6%	43,451	4.8%
City	Lake City	911	6.80%	91,457	98,262	7.4%	100,878	2.7%
City	Mcbain	584	-15.61%	73,819	71,949	-2.5%	68,324	-5.0%
Monroe County		145,808	9.19%	2,895,546	3,165,240	9.3%	3,137,478	-0.9%
Township	Ash	5,048	7.18%	361,344	384,031	6.3%	399,873	4.1%
Township	Bedford	28,606	20.46%	1,845,911	2,337,917	26.7%	2,448,674	4.7%
Township	Berlin	5,154	11.20%	362,555	398,274	9.9%	414,248	4.0%
Township	Dundee	2,819	3.95%	211,657	214,690	1.4%	222,469	3.6%
Township	Erie	4,850	7.97%	352,720	380,938	8.0%	409,362	7.5%
Township	Exeter	3,222	17.04%	204,176	239,911	17.5%	251,220	4.7%
Township	Frenchtown	20,777	14.00%	1,657,190	1,847,371	11.5%	1,908,993	3.3%
Township	Ida	4,949	8.67%	348,033	375,876	8.0%	398,472	6.0%
Township	Lasalle	5,001	0.32%	399,235	403,314	1.0%	420,009	4.1%
Township	London	3,024	3.74%	222,917	236,392	6.0%	246,416	4.2%
Township	Milan	1,670	0.66%	131,704	132,152	0.3%	137,404	4.0%
Township	Monroe	13,491	13.28%	1,046,996	1,181,578	12.9%	1,221,910	3.4%
Township	Raisinville	4,896	6.00%	339,530	363,806	7.1%	380,639	4.6%
Township	Summerfield	3,233	5.10%	252,072	262,980	4.3%	272,208	3.5%
Township	Whiteford	4,420	-0.29%	350,779	348,123	-0.8%	361,446	3.8%
City	Luna Pier	1,483	-1.59%	169,532	165,237	-2.5%	162,239	-1.8%
City	Milan				<i>Split Unit: See Milan in Washtenaw County</i>			
City	Monroe	21,939	-3.94%	2,852,494	2,780,235	-2.5%	2,712,529	-2.4%
City	Petersburg	1,157	-3.66%	174,891	186,131	6.4%	189,061	1.6%
Village	Carleton	2,562	-7.51%	280,927	293,375	4.4%	302,690	3.2%
Village	Dundee	3,522	32.21%	309,727	391,876	26.5%	394,349	0.6%
Village	Estral Beach	486	13.02%	37,566	44,000	17.1%	45,652	3.8%
Village	Maybee	505	1.00%	48,292	52,080	7.8%	53,935	3.6%
Village	South Rockwood	1,284	5.16%	128,526	135,845	5.7%	138,689	2.1%
Montcalm County		60,121	15.16%	1,175,868	1,343,239	14.2%	1,331,793	-0.9%
Township	Belvidere	2,438	14.25%	197,246	216,550	9.8%	222,613	2.8%
Township	Bloomer	2,547	20.83%	157,531	211,075	34.0%	222,780	5.5%
Township	Bushnell	1,496	16.42%	95,347	117,434	23.2%	123,751	5.4%

GENERAL REVENUE SHARING PAYMENTS TO LOCAL UNITS

APPENDIX B

Local Unit		2000		FY 1999-2000	FY 2000-01 Year-to-Date		FY 2001-02 Year-to-Date	
Type	Name	Population	% Change	Enacted Final	Enacted Final	% Change	Enacted Estimate	% Change
Township	Cato	1,808	29.89%	107,767	137,274	27.4%	143,285	4.4%
Township	Crystal	2,824	11.14%	199,354	227,368	14.1%	237,426	4.4%
Township	Day	1,050	9.38%	78,825	85,131	8.0%	91,457	7.4%
Township	Douglass	2,377	22.27%	143,334	180,556	26.0%	189,682	5.1%
Township	Eureka	3,271	26.10%	199,139	252,554	26.8%	263,800	4.5%
Township	Evergreen	2,392	18.42%	149,115	183,714	23.2%	193,100	5.1%
Township	Fairplains	1,826	16.23%	116,698	144,731	24.0%	151,606	4.8%
Township	Ferris	1,379	15.98%	91,782	112,101	22.1%	117,451	4.8%
Township	Home	1,464	5.55%	116,593	119,741	2.7%	123,434	3.1%
Township	Maple Valley	2,083	14.20%	140,072	168,034	20.0%	176,897	5.3%
Township	Montcalm	3,178	10.39%	226,504	259,216	14.4%	271,473	4.7%
Township	Pierson	2,681	36.09%	143,384	195,937	36.7%	205,149	4.7%
Township	Pine	1,654	18.82%	103,146	126,688	22.8%	132,766	4.8%
Township	Reynolds	2,694	60.64%	128,017	201,252	57.2%	210,712	4.7%
Township	Richland	2,868	21.78%	181,247	235,237	29.8%	246,798	4.9%
Township	Sidney	2,390	10.34%	160,064	183,186	14.4%	192,222	4.9%
Township	Winfield	2,049	53.37%	99,087	154,448	55.9%	161,792	4.8%
City	Carson City	1,190	2.76%	153,888	166,199	8.0%	176,400	6.1%
City	Greenville	7,935	-2.05%	986,163	974,548	-1.2%	986,656	1.2%
City	Stanton	1,464	-0.07%	176,359	190,468	8.0%	205,705	8.0%
Village	Edmore	1,244	10.48%	124,979	150,412	20.3%	153,648	2.2%
Village	Howard City	1,585	17.32%	142,294	165,726	16.5%	170,699	3.0%
Village	Lakeview	1,112	0.36%	142,724	152,610	6.9%	155,626	2.0%
Village	Mcbride	232	-1.69%	19,580	21,146	8.0%	22,781	7.7%
Village	Pierson	185	-10.63%	21,024	22,706	8.0%	24,522	8.0%
Village	Sheridan	705	-3.42%	79,642	82,550	3.7%	84,592	2.5%
Montmorency County		10,294	15.20%	186,014	214,726	15.4%	212,767	-0.9%
Township	Albert	2,695	28.52%	168,192	207,505	23.4%	215,774	4.0%
Township	Avery	717	23.83%	45,402	54,953	21.0%	57,467	4.6%
Township	Briley	2,008	9.67%	159,781	169,930	6.4%	175,803	3.5%
Township	Hillman	1,582	2.33%	117,521	119,546	1.7%	124,826	4.4%
Township	Loud	284	29.09%	17,260	21,278	23.3%	22,169	4.2%
Township	Montmorency	1,202	11.81%	80,691	88,864	10.1%	92,682	4.3%
Township	Rust	549	6.81%	38,309	40,339	5.3%	42,220	4.7%
Township	Vienna	572	32.71%	34,996	43,845	25.3%	45,614	4.0%
Village	Hillman	685	6.53%	67,468	72,252	7.1%	75,128	4.0%
Muskegon County		168,261	6.88%	3,631,261	3,876,973	6.8%	3,844,935	-0.8%
Township	Blue Lake	1,990	62.45%	101,893	164,404	61.3%	168,898	2.7%
Township	Casnovia	2,513	15.59%	169,573	202,184	19.2%	211,051	4.4%
Township	Cedar Creek	3,109	9.24%	212,805	229,829	8.0%	248,215	8.0%
Township	Dalton	7,041	25.35%	469,169	605,982	29.2%	629,677	3.9%
Township	Egelston	9,537	24.83%	686,955	916,018	33.3%	954,737	4.2%
Township	Fruitland	5,235	19.22%	340,124	401,333	18.0%	418,073	4.2%
Township	Fruitport	11,409	7.31%	849,184	917,119	8.0%	970,694	5.8%
Township	Holton	2,532	9.23%	191,684	207,019	8.0%	223,581	8.0%
Township	Laketon	7,363	12.62%	495,454	576,971	16.5%	604,136	4.7%
Township	Montague	1,637	14.56%	107,039	125,357	17.1%	131,270	4.7%
Township	Moorland	1,616	4.73%	126,924	137,078	8.0%	146,985	7.2%

GENERAL REVENUE SHARING PAYMENTS TO LOCAL UNITS

APPENDIX B

Local Unit		2000		FY 1999-2000	FY 2000-01 Year-to-Date		FY 2001-02 Year-to-Date	
Type	Name	Population	% Change	Enacted Final	Enacted Final	% Change	Enacted Estimate	% Change
Township	Muskegon	17,737	15.91%	1,535,916	1,921,264	25.1%	2,005,606	4.4%
Township	Ravenna	1,650	14.98%	107,797	123,139	14.2%	128,259	4.2%
Township	Sullivan	2,477	11.08%	165,587	192,270	16.1%	201,470	4.8%
Township	Whitehall	1,648	12.57%	114,537	130,069	13.6%	135,346	4.1%
Township	White River	1,338	7.04%	92,630	98,567	6.4%	102,894	4.4%
City	Montague	2,407	5.76%	282,516	298,881	5.8%	294,244	-1.6%
City	Muskegon	38,166	-0.85%	5,240,127	5,659,337	8.0%	5,825,355	2.9%
City	Muskegon Heights	12,049	-8.55%	2,039,396	2,202,548	8.0%	2,266,557	2.9%
City	North Muskegon	4,031	2.86%	419,058	417,977	-0.3%	425,471	1.8%
City	Norton Shores	22,527	3.55%	2,060,718	2,154,337	4.5%	2,219,651	3.0%
City	Roosevelt Park	3,890	0.13%	427,015	429,630	0.6%	436,348	1.6%
City	Whitehall	2,884	-4.72%	434,615	423,605	-2.5%	402,262	-5.0%
Village	Casnovia							
					<i>Split Unit: See Casnovia in Kent County</i>			
Village	Fruitport	1,124	3.12%	107,803	113,426	5.2%	116,101	2.4%
Village	Lakewood Club	1,006	50.37%	65,533	107,235	63.6%	111,949	4.4%
Village	Ravenna	1,206	31.23%	87,987	118,634	34.8%	121,910	2.8%
Newaygo County		47,777	25.15%	825,337	1,023,510	24.0%	1,014,412	-0.9%
Township	Ashland	2,570	28.69%	170,903	228,891	33.9%	238,377	4.1%
Township	Barton	820	31.41%	51,235	70,675	37.9%	73,960	4.6%
Township	Beaver	608	45.80%	32,521	49,451	52.1%	51,830	4.8%
Township	Big Prairie	2,465	42.40%	127,910	187,347	46.5%	196,826	5.1%
Township	Bridgeton	2,098	33.29%	127,525	182,152	42.8%	189,766	4.2%
Township	Brooks	3,671	34.57%	200,845	275,022	36.9%	288,619	4.9%
Township	Croton	3,042	54.81%	154,516	232,993	50.8%	243,107	4.3%
Township	Dayton	2,002	2.35%	145,864	154,942	6.2%	162,510	4.9%
Township	Denver	1,607	29.70%	95,605	131,864	37.9%	138,192	4.8%
Township	Ensley	2,474	24.70%	162,650	206,777	27.1%	216,259	4.6%
Township	Everett	1,985	30.68%	120,096	168,768	40.5%	176,832	4.8%
Township	Garfield	2,464	27.08%	158,820	205,170	29.2%	214,017	4.3%
Township	Goodwell	551	53.91%	31,369	44,556	42.0%	46,252	3.8%
Township	Grant	3,130	22.36%	214,069	277,562	29.7%	289,943	4.5%
Township	Home	261	29.21%	16,682	20,697	24.1%	21,492	3.8%
Township	Lilley	788	39.47%	51,160	66,985	30.9%	69,153	3.2%
Township	Lincoln	1,338	38.08%	79,262	113,716	43.5%	118,700	4.4%
Township	Merrill	590	30.82%	40,425	52,339	29.5%	53,811	2.8%
Township	Monroe	324	31.17%	20,261	26,507	30.8%	27,645	4.3%
Township	Norwich	557	11.62%	43,827	48,940	11.7%	50,723	3.6%
Township	Sheridan	2,423	7.50%	167,620	181,030	8.0%	195,288	7.9%
Township	Sherman	2,159	15.70%	138,954	169,405	21.9%	178,084	5.1%
Township	Troy	243	40.46%	13,201	18,166	37.6%	18,969	4.4%
Township	Wilcox	1,145	37.79%	65,449	97,691	49.3%	102,354	4.8%
City	Fremont	4,224	8.64%	534,401	530,068	-0.8%	531,530	0.3%
City	Grant	881	15.31%	100,316	125,121	24.7%	128,245	2.5%
City	Newaygo	1,670	14.07%	198,224	216,208	9.1%	214,404	-0.8%
City	White Cloud	1,323	18.55%	142,245	188,987	32.9%	197,248	4.4%
Village	Hesperia							
					<i>Split Unit: See Hesperia in Oceana County</i>			
Oakland County		1,193,195	10.24%	23,609,290	26,020,656	10.2%	25,793,462	-0.9%
Township	Addison	6,107	27.63%	431,955	513,179	18.8%	528,775	3.0%

GENERAL REVENUE SHARING PAYMENTS TO LOCAL UNITS

APPENDIX B

Local Unit		2000		FY 1999-2000	FY 2000-01 Year-to-Date		FY 2001-02 Year-to-Date	
Type	Name	Population	% Change	Enacted Final	Enacted Final	% Change	Enacted Estimate	% Change
Township	Bloomfield	43,023	1.29%	3,923,952	4,001,967	2.0%	4,123,567	3.0%
Township	Brandon	13,230	22.51%	1,041,734	1,191,417	14.4%	1,221,839	2.6%
Township	Commerce	30,349	36.98%	1,803,779	2,453,226	36.0%	2,561,548	4.4%
Township	Groveland	6,150	30.71%	391,559	490,941	25.4%	509,221	3.7%
Township	Highland	19,169	6.84%	1,564,303	1,637,914	4.7%	1,688,190	3.1%
Township	Holly	3,902	19.80%	257,746	296,632	15.1%	307,934	3.8%
Township	Independence	32,581	37.37%	2,216,340	2,900,255	30.9%	2,998,775	3.4%
Township	Lyon	11,041	25.07%	736,836	884,781	20.1%	914,057	3.3%
Township	Milford	8,999	35.85%	531,446	680,766	28.1%	706,462	3.8%
Township	Novi	193	28.67%	13,056	15,707	20.3%	16,239	3.4%
Township	Oakland	13,071	58.88%	659,409	1,021,754	54.9%	1,065,595	4.3%
Township	Orion	30,748	46.29%	1,860,853	2,596,787	39.5%	2,697,485	3.9%
Township	Oxford	12,485	38.66%	919,293	1,128,877	22.8%	1,154,059	2.2%
Township	Rose	6,210	26.07%	378,123	472,193	24.9%	492,625	4.3%
Township	Royal Oak	5,446	8.79%	712,205	769,181	8.0%	830,715	8.0%
Township	Southfield	26	44.44%	1,786	2,203	23.3%	2,251	2.2%
Township	Springfield	13,338	34.36%	825,682	1,059,782	28.4%	1,098,634	3.7%
Township	Waterford	73,060	9.55%	6,787,789	7,330,812	8.0%	7,562,853	3.2%
Township	West Bloomfield	64,860	18.97%	5,006,984	5,858,812	17.0%	6,061,847	3.5%
Township	White Lake	28,144	25.08%	1,979,187	2,456,822	24.1%	2,550,985	3.8%
City	Auburn Hills	19,673	15.55%	1,838,241	1,968,118	7.1%	2,002,331	1.7%
City	Berkley	15,531	-8.43%	1,950,363	1,900,956	-2.5%	1,855,806	-2.4%
City	Birmingham	19,291	-3.53%	2,388,760	2,328,248	-2.5%	2,252,291	-3.3%
City	Bloomfield Hills	3,940	-8.12%	378,749	369,155	-2.5%	353,420	-4.3%
City	Clarkston	962	-4.28%	107,971	105,236	-2.5%	102,870	-2.2%
City	Clawson	12,732	-8.23%	1,596,800	1,556,350	-2.5%	1,519,303	-2.4%
City	Farmington	10,423	2.49%	1,232,636	1,211,997	-1.7%	1,223,570	1.0%
City	Farmington Hills	82,111	10.05%	7,616,416	8,301,904	9.0%	8,527,961	2.7%
City	Ferndale	22,105	-11.88%	4,493,291	4,379,467	-2.5%	4,158,813	-5.0%
City	Hazel Park	18,963	-5.43%	2,954,580	3,187,097	7.9%	3,241,172	1.7%
City	Huntington Woods	6,151	-4.18%	793,056	772,966	-2.5%	743,768	-3.8%
City	Keego Harbor	2,769	-5.56%	333,160	324,720	-2.5%	318,017	-2.1%
City	Lake Angelus	326	-0.61%	32,777	31,947	-2.5%	31,873	-0.2%
City	Lathrup Village	4,236	-2.15%	528,267	514,885	-2.5%	501,390	-2.6%
City	Madison Heights	31,101	-3.40%	4,272,892	4,164,651	-2.5%	4,051,848	-2.7%
City	Northville	6,459	3.74%	769,831	751,782	-2.3%	756,704	0.7%
City	Novi	47,386	43.60%	3,372,487	4,448,257	31.9%	4,583,019	3.0%
City	Oak Park	29,793	-2.22%	4,868,695	5,009,880	2.9%	5,032,552	0.5%
City	Orchard Lake Village	2,215	-3.11%	231,796	225,924	-2.5%	220,843	-2.2%
City	Pleasant Ridge	2,594	-6.52%	384,550	374,809	-2.5%	355,925	-5.0%
City	Pontiac	65,738	-6.33%	17,460,019	17,017,722	-2.5%	16,390,204	-3.7%
City	Rochester	10,467	46.80%	846,337	1,058,866	25.1%	1,076,242	1.6%
City	Rochester Hills	68,825	11.43%	5,882,590	6,494,767	10.4%	6,698,565	3.1%
City	Royal Oak	60,062	-8.18%	7,480,290	7,290,799	-2.5%	7,128,463	-2.2%
City	Southfield	78,263	3.38%	9,392,178	9,362,849	-0.3%	9,456,312	1.0%
City	South Lyon	10,036	54.90%	797,503	1,059,848	32.9%	1,067,245	0.7%
City	Sylvan Lake	1,735	-9.35%	203,086	197,941	-2.5%	187,968	-5.0%
City	Troy	80,959	11.08%	7,625,643	8,282,260	8.6%	8,486,126	2.5%
City	Walled Lake	6,713	6.93%	771,514	777,927	0.8%	784,463	0.8%
City	Wixom	13,263	55.12%	1,082,111	1,372,133	26.8%	1,394,693	1.6%

GENERAL REVENUE SHARING PAYMENTS TO LOCAL UNITS

APPENDIX B

Local Unit		2000		FY 1999-2000	FY 2000-01 Year-to-Date		FY 2001-02 Year-to-Date	
Type	Name	Population	% Change	Enacted Final	Enacted Final	% Change	Enacted Estimate	% Change
Village	Beverly Hills	10,437	-1.63%	1,088,436	1,060,864	-2.5%	1,058,566	-0.2%
Village	Bingham Farms	1,030	2.90%	89,863	88,076	-2.0%	90,248	2.5%
Village	Franklin	2,937	11.84%	240,137	253,109	5.4%	259,753	2.6%
Village	Holly	6,135	9.65%	678,844	733,152	8.0%	788,278	7.5%
Village	Lake Orion	2,715	-11.19%	328,245	319,930	-2.5%	303,811	-5.0%
Village	Leonard	332	-7.00%	31,253	30,461	-2.5%	29,786	-2.2%
Village	Milford	6,272	14.04%	650,288	677,256	4.1%	684,128	1.0%
Village	Ortonville	1,535	22.60%	115,559	139,724	20.9%	143,439	2.7%
Village	Oxford	3,540	20.86%	271,055	309,218	14.1%	317,551	2.7%
Village	Wolverine Lake	4,415	-6.60%	455,993	444,442	-2.5%	433,202	-2.5%
Oceana County		26,846	19.73%	461,637	553,878	20.0%	548,767	-0.9%
Township	Benona	1,520	34.16%	85,882	111,207	29.5%	115,935	4.3%
Township	Claybanks	831	22.39%	50,712	61,174	20.6%	63,870	4.4%
Township	Colfax	574	53.48%	29,526	43,715	48.1%	45,599	4.3%
Township	Crystal	832	26.44%	52,013	69,290	33.2%	72,655	4.9%
Township	Elbridge	1,233	50.37%	65,889	104,326	58.3%	109,685	5.1%
Township	Ferry	1,296	25.46%	81,200	107,402	32.3%	112,390	4.6%
Township	Golden	1,810	39.02%	102,611	135,795	32.3%	141,266	4.0%
Township	Grant	2,456	17.46%	162,504	196,769	21.1%	204,675	4.0%
Township	Greenwood	1,154	26.12%	71,214	94,061	32.1%	98,754	5.0%
Township	Hart	2,026	33.91%	116,929	161,118	37.8%	168,623	4.7%
Township	Leavitt	591	9.04%	43,163	46,616	8.0%	49,794	6.8%
Township	Newfield	1,893	21.27%	121,507	150,550	23.9%	157,355	4.5%
Township	Otto	662	63.86%	33,172	54,234	63.5%	56,484	4.1%
Township	Pentwater	555	49.19%	29,568	40,731	37.8%	42,290	3.8%
Township	Shelby	1,636	18.46%	114,674	130,756	14.0%	135,504	3.6%
Township	Weare	1,261	21.13%	83,152	104,086	25.2%	108,648	4.4%
City	Hart	1,923	0.73%	241,030	249,562	3.5%	255,091	2.2%
Village	Hesperia	954	8.29%	103,952	112,268	8.0%	121,249	8.0%
Village	New Era	461	-11.35%	49,229	47,982	-2.5%	47,939	-0.1%
Village	Pentwater	958	-8.76%	109,036	106,274	-2.5%	100,920	-5.0%
Village	Rothbury	416	2.21%	35,984	38,166	6.1%	39,109	2.5%
Village	Shelby	1,914	2.30%	221,469	239,187	8.0%	258,322	8.0%
Village	Walkerville	254	-3.05%	27,502	29,702	8.0%	32,078	8.0%
Ogemaw County		21,620	15.82%	396,739	459,027	15.7%	454,911	-0.9%
Township	Churchill	1,603	41.86%	87,841	121,198	38.0%	126,438	4.3%
Township	Cumming	796	16.03%	61,815	68,848	11.4%	71,286	3.5%
Township	Edwards	1,390	14.88%	96,113	113,150	17.7%	117,888	4.2%
Township	Foster	821	14.19%	52,814	60,081	13.8%	62,855	4.6%
Township	Goodar	493	29.40%	29,406	36,967	25.7%	38,561	4.3%
Township	Hill	1,584	2.46%	115,626	117,440	1.6%	122,481	4.3%
Township	Horton	997	4.40%	70,335	74,877	6.5%	78,454	4.8%
Township	Klacking	617	43.49%	34,061	47,959	40.8%	50,101	4.5%
Township	Logan	581	6.22%	40,065	42,834	6.9%	44,762	4.5%
Township	Mills	4,005	26.18%	257,971	336,583	30.5%	352,478	4.7%
Township	Ogemaw	1,118	25.20%	69,868	89,196	27.7%	92,231	3.4%
Township	Richland	670	23.62%	42,410	51,148	20.6%	53,294	4.2%
Township	Rose	1,409	11.83%	102,526	114,598	11.8%	119,479	4.3%

GENERAL REVENUE SHARING PAYMENTS TO LOCAL UNITS

APPENDIX B

Local Unit		2000		FY 1999-2000	FY 2000-01 Year-to-Date		FY 2001-02 Year-to-Date	
Type	Name	Population	% Change	Enacted Final	Enacted Final	% Change	Enacted Estimate	% Change
Township	West Branch	2,628	14.56%	171,650	196,160	14.3%	205,773	4.9%
City	Rose City	721	5.10%	92,413	99,806	8.0%	107,790	8.0%
City	West Branch	1,901	0.05%	238,099	234,454	-1.5%	233,925	-0.2%
Village	Prescott	286	-8.92%	27,347	28,632	4.7%	29,988	4.7%
Ontonagon County		7,813	-11.67%	201,183	182,392	-9.3%	180,904	-0.8%
Township	Bergland	550	-11.00%	49,017	47,775	-2.5%	45,632	-4.5%
Township	Bohemia	77	-14.44%	7,410	7,222	-2.5%	6,858	-5.0%
Township	Carp Lake	891	-25.31%	88,314	86,077	-2.5%	81,740	-5.0%
Township	Greenland	870	-13.09%	75,149	73,245	-2.5%	75,228	2.7%
Township	Haight	228	4.59%	16,379	17,225	5.2%	18,003	4.5%
Township	Interior	375	-21.88%	38,649	37,670	-2.5%	35,772	-5.0%
Township	Matchwood	115	-5.74%	8,996	8,768	-2.5%	8,917	1.7%
Township	Mcmillan	601	-7.54%	54,127	55,343	2.2%	57,987	4.8%
Township	Ontonagon	1,185	-1.09%	89,647	87,915	-1.9%	91,844	4.5%
Township	Rockland	324	-12.67%	31,161	30,372	-2.5%	28,842	-5.0%
Township	Stannard	833	-4.58%	66,574	67,622	1.6%	70,939	4.9%
Village	Ontonagon	1,764	-13.15%	230,875	225,026	-2.5%	222,499	-1.1%
Osceola County		23,164	15.06%	535,322	599,463	12.0%	595,053	-0.7%
Township	Burdell	1,004	9.49%	74,034	79,957	8.0%	85,185	6.5%
Township	Cedar	406	52.06%	20,314	29,993	47.6%	31,351	4.5%
Township	Ewart	1,513	23.11%	90,591	113,564	25.4%	119,256	5.0%
Township	Hartwick	629	37.94%	33,579	46,491	38.5%	48,798	5.0%
Township	Hersey	1,472	33.70%	88,438	114,568	29.5%	119,385	4.2%
Township	Highland	1,207	19.27%	75,250	94,364	25.4%	99,062	5.0%
Township	Leroy	892	26.17%	56,093	71,388	27.3%	74,574	4.5%
Township	Lincoln	1,629	32.65%	110,775	137,281	23.9%	141,066	2.8%
Township	Marion	744	16.61%	48,225	55,564	15.2%	58,033	4.4%
Township	Middle Branch	858	22.40%	51,879	65,572	26.4%	68,964	5.2%
Township	Orient	803	16.04%	51,658	59,936	16.0%	62,678	4.6%
Township	Osceola	1,118	19.32%	69,475	86,561	24.6%	90,993	5.1%
Township	Richmond	1,695	1.44%	131,304	133,253	1.5%	138,339	3.8%
Township	Rose Lake	1,231	27.17%	76,854	95,895	24.8%	99,998	4.3%
Township	Sherman	1,081	14.03%	74,096	89,033	20.2%	93,656	5.2%
Township	Sylvan	1,033	21.24%	63,043	78,823	25.0%	82,672	4.9%
City	Ewart	1,738	-0.34%	223,150	217,497	-2.5%	213,939	-1.6%
City	Reed City	2,397	-0.79%	306,224	330,722	8.0%	340,087	2.8%
Village	Hersey	374	5.65%	30,059	32,464	8.0%	35,061	8.0%
Village	Leroy	267	6.37%	22,783	24,606	8.0%	26,574	8.0%
Village	Marion	836	3.59%	117,781	127,203	8.0%	137,379	8.0%
Village	Tustin	237	0.42%	24,263	26,204	8.0%	28,300	8.0%
Oscoda County		9,418	20.10%	160,936	193,768	20.4%	191,975	-0.9%
Township	Big Creek	3,380	21.67%	205,141	255,720	24.7%	268,947	5.2%
Township	Clinton	511	14.32%	32,903	37,076	12.7%	38,703	4.4%
Township	Comins	2,017	13.00%	137,425	157,165	14.4%	164,664	4.8%
Township	Elmer	1,095	28.22%	62,914	81,404	29.4%	85,389	4.9%
Township	Greenwood	1,195	35.80%	67,863	88,496	30.4%	92,177	4.2%
Township	Mentor	1,220	11.11%	84,813	93,986	10.8%	98,176	4.5%

GENERAL REVENUE SHARING PAYMENTS TO LOCAL UNITS

APPENDIX B

Local Unit		2000		FY 1999-2000	FY 2000-01 Year-to-Date		FY 2001-02 Year-to-Date	
Type	Name	Population	% Change	Enacted Final	Enacted Final	% Change	Enacted Estimate	% Change
Otsego County		23,281	29.75%	379,642	489,175	28.9%	484,742	-0.9%
Township	Bagley	5,838	18.44%	350,516	420,266	19.9%	441,044	4.9%
Township	Charlton	1,330	45.67%	72,899	99,378	36.3%	103,351	4.0%
Township	Chester	1,265	35.44%	68,326	89,767	31.4%	93,924	4.6%
Township	Corwith	1,132	39.58%	60,125	82,130	36.6%	85,800	4.5%
Township	Dover	614	26.60%	36,919	45,157	22.3%	47,047	4.2%
Township	Elmira	1,598	53.95%	77,548	117,187	51.1%	122,580	4.6%
Township	Hayes	2,385	65.97%	105,317	171,411	62.8%	179,943	5.0%
Township	Livingston	2,339	33.28%	127,917	170,229	33.1%	175,802	3.3%
Township	Otsego Lake	2,532	41.14%	135,203	184,764	36.7%	193,039	4.5%
City	Gaylord	3,661	12.92%	402,505	412,860	2.6%	416,065	0.8%
Village	Vanderbilt	587	-2.98%	64,226	68,417	6.5%	70,130	2.5%
Ottawa County		238,045	26.82%	4,035,308	5,072,014	25.7%	5,026,688	-0.9%
Township	Allendale	13,042	62.58%	640,556	1,113,262	73.8%	1,162,342	4.4%
Township	Blendon	5,721	20.70%	368,158	447,187	21.5%	467,377	4.5%
Township	Chester	2,315	8.53%	211,856	227,491	7.4%	233,523	2.7%
Township	Crockery	3,782	5.08%	275,919	297,814	7.9%	311,068	4.5%
Township	Georgetown	41,658	27.50%	2,497,891	3,414,828	36.7%	3,589,227	5.1%
Township	Grand Haven	13,278	36.75%	843,866	1,087,152	28.8%	1,123,933	3.4%
Township	Holland	28,911	64.99%	1,627,312	2,504,308	53.9%	2,601,958	3.9%
Township	Jamestown	5,062	24.71%	331,815	408,809	23.2%	419,182	2.5%
Township	Olive	4,557	59.00%	244,048	371,215	52.1%	384,714	3.6%
Township	Park	17,579	29.82%	1,079,014	1,411,426	30.8%	1,474,019	4.4%
Township	Polkton	2,335	2.55%	182,716	186,850	2.3%	194,266	4.0%
Township	Port Sheldon	4,503	53.74%	221,881	322,531	45.4%	336,535	4.3%
Township	Robinson	5,588	42.37%	308,486	437,259	41.7%	455,711	4.2%
Township	Spring Lake	10,626	29.36%	688,069	846,646	23.0%	876,900	3.6%
Township	Tallmadge	6,881	9.22%	470,370	508,000	8.0%	545,744	7.4%
Township	Wright	3,286	0.03%	284,543	284,909	0.1%	294,078	3.2%
Township	Zeeland	7,613	70.24%	412,875	647,311	56.8%	666,475	3.0%
City	Coopersville	3,910	14.29%	397,409	436,195	9.8%	448,906	2.9%
City	Ferrysburg	3,040	4.15%	322,058	320,195	-0.6%	324,691	1.4%
City	Grand Haven	11,033	-7.13%	1,440,508	1,404,017	-2.5%	1,338,882	-4.6%
City	Holland	35,048	14.00%	3,805,711	4,033,030	6.0%	4,087,677	1.4%
City	Hudsonville	7,160	16.05%	652,105	742,978	13.9%	763,059	2.7%
City	Zeeland	5,805	7.16%	725,246	714,902	-1.4%	717,029	0.3%
Village	Spring Lake	2,514	-0.91%	267,483	260,707	-2.5%	260,121	-0.2%
Presque Isle County		14,402	4.85%	294,022	309,914	5.4%	307,172	-0.9%
Township	Allis	1,035	16.69%	65,978	79,972	21.2%	83,615	4.6%
Township	Bearinger	329	33.74%	18,704	23,923	27.9%	24,906	4.1%
Township	Belknap	854	-7.17%	68,439	67,269	-1.7%	70,800	5.2%
Township	Bismarck	408	27.90%	23,465	29,392	25.3%	30,727	4.5%
Township	Case	679	30.58%	42,733	53,193	24.5%	55,250	3.9%
Township	Krakow	622	0.81%	47,046	46,656	-0.8%	48,525	4.0%
Township	Metz	331	-17.87%	30,926	30,143	-2.5%	28,624	-5.0%
Township	Moltke	352	13.92%	23,645	27,295	15.4%	28,625	4.9%
Township	North Allis	618	23.11%	37,073	46,145	24.5%	48,343	4.8%

GENERAL REVENUE SHARING PAYMENTS TO LOCAL UNITS

APPENDIX B

Local Unit		2000		FY 1999-2000	FY 2000-01 Year-to-Date		FY 2001-02 Year-to-Date	
Type	Name	Population	% Change	Enacted Final	Enacted Final	% Change	Enacted Estimate	% Change
Township	Ocqueoc	634	21.69%	39,707	47,064	18.5%	49,048	4.2%
Township	Posen	667	-5.92%	56,069	54,649	-2.5%	55,491	1.5%
Township	Presque Isle	1,691	28.89%	97,169	121,763	25.3%	127,232	4.5%
Township	Pulawski	372	-12.88%	35,174	34,283	-2.5%	32,556	-5.0%
Township	Rogers	949	10.74%	63,166	69,596	10.2%	72,825	4.6%
City	Onaway	993	-4.43%	145,050	156,654	8.0%	163,631	4.5%
City	Rogers City	3,313	-8.86%	465,376	471,526	1.3%	482,538	2.3%
Village	Millersburg	263	5.20%	22,127	23,897	8.0%	25,809	8.0%
Village	Posen	292	11.03%	22,831	27,290	19.5%	28,588	4.8%
Roscommon County		25,401	28.61%	405,096	521,179	28.7%	516,343	-0.9%
Township	Ausable	281	21.65%	17,037	21,048	23.5%	22,317	6.0%
Township	Backus	350	40.56%	20,359	27,981	37.4%	29,203	4.4%
Township	Denton	5,817	36.20%	365,939	469,093	28.2%	486,101	3.6%
Township	Gerrish	3,072	26.89%	197,528	236,689	19.8%	245,291	3.6%
Township	Higgins	928	12.21%	71,201	76,458	7.4%	78,856	3.1%
Township	Lake	1,351	9.48%	100,156	105,517	5.4%	109,226	3.5%
Township	Lyon	1,462	40.98%	81,941	109,173	33.2%	113,493	4.0%
Township	Markey	2,424	37.10%	150,355	193,687	28.8%	200,523	3.5%
Township	Nester	263	16.89%	18,410	20,509	11.4%	21,223	3.5%
Township	Richfield	4,139	21.27%	296,323	359,238	21.2%	373,290	3.9%
Township	Roscommon	4,230	31.24%	279,523	359,399	28.6%	372,616	3.7%
Village	Roscommon	1,084	27.23%	97,704	130,186	33.2%	134,316	3.2%
Saginaw County		209,133	-1.24%	4,908,183	4,896,907	-0.2%	4,857,087	-0.8%
Township	Albee	2,338	-2.66%	178,153	180,731	1.4%	189,761	5.0%
Township	Birch Run	4,538	4.15%	329,792	341,212	3.5%	355,619	4.2%
Township	Blumfield	2,014	0.75%	154,437	155,183	0.5%	161,502	4.1%
Township	Brady	2,005	-1.43%	159,322	163,777	2.8%	171,146	4.5%
Township	Brant	1,992	3.59%	154,092	166,360	8.0%	173,260	4.1%
Township	Bridgeport	11,709	-8.14%	1,154,788	1,171,208	1.4%	1,225,227	4.6%
Township	Buena Vista	10,318	-5.34%	1,221,637	1,190,690	-2.5%	1,196,665	0.5%
Township	Carrollton	6,602	1.24%	629,856	680,244	8.0%	734,664	8.0%
Township	Chapin	1,045	7.84%	76,233	82,332	8.0%	88,919	8.0%
Township	Chesaning	2,313	-1.03%	190,771	185,938	-2.5%	192,080	3.3%
Township	Frankenmuth	2,049	-3.44%	165,281	161,094	-2.5%	165,322	2.6%
Township	Fremont	2,099	-1.78%	158,046	159,606	1.0%	167,215	4.8%
Township	James	1,930	-3.74%	159,062	158,282	-0.5%	165,210	4.4%
Township	Jonesfield	928	-5.79%	80,291	78,257	-2.5%	77,832	-0.5%
Township	Kochville	3,241	18.28%	229,627	259,661	13.1%	268,392	3.4%
Township	Lakefield	1,030	7.07%	82,262	88,843	8.0%	94,576	6.5%
Township	Maple Grove	2,640	-6.71%	209,743	204,430	-2.5%	213,243	4.3%
Township	Marion	925	-0.32%	82,136	88,707	8.0%	93,072	4.9%
Township	Richland	4,281	2.49%	365,524	386,516	5.7%	399,954	3.5%
Township	Saginaw	39,657	5.24%	3,283,485	3,535,454	7.7%	3,670,077	3.8%
Township	St Charles	1,377	-10.23%	122,677	119,569	-2.5%	113,545	-5.0%
Township	Spaulding	2,399	-9.88%	213,505	208,961	-2.1%	218,705	4.7%
Township	Swan Creek	2,368	8.03%	174,994	187,600	7.2%	195,139	4.0%
Township	Taymouth	4,624	2.21%	336,285	362,140	7.7%	380,502	5.1%
Township	Thomas	11,877	8.26%	902,266	974,447	8.0%	1,039,133	6.6%

GENERAL REVENUE SHARING PAYMENTS TO LOCAL UNITS

APPENDIX B

Local Unit		2000		FY 1999-2000	FY 2000-01 Year-to-Date		FY 2001-02 Year-to-Date	
Type	Name	Population	% Change	Enacted Final	Enacted Final	% Change	Enacted Estimate	% Change
Township	Tittabawassee	7,079	52.99%	371,376	570,013	53.5%	586,613	2.9%
Township	Zilwaukee	61	-25.61%	9,793	9,545	-2.5%	9,064	-5.0%
City	Frankenmuth	4,838	9.75%	451,981	470,155	4.0%	479,751	2.0%
City	Saginaw	61,520	-11.27%	13,237,169	13,407,691	1.3%	13,521,563	0.8%
City	Zilwaukee	1,799	-2.76%	241,205	247,191	2.5%	247,553	0.1%
Village	Birch Run	1,653	65.80%	88,702	132,874	49.8%	137,748	3.7%
Village	Chesaning	2,548	-0.74%	298,091	309,089	3.7%	316,365	2.4%
Village	Merrill	782	3.58%	89,370	96,520	8.0%	104,242	8.0%
Village	Oakley	339	-6.35%	31,268	31,613	1.1%	32,890	4.0%
Village	St Charles	2,215	3.31%	239,396	258,548	8.0%	279,232	8.0%
St Clair County		164,126	12.79%	3,420,812	3,818,707	11.6%	3,787,464	-0.8%
Township	Berlin	3,162	31.37%	181,951	241,307	32.6%	252,125	4.5%
Township	Brockway	1,900	18.09%	132,734	158,490	19.4%	164,345	3.7%
Township	Burtchville	3,956	11.15%	275,629	309,807	12.4%	323,102	4.3%
Township	Casco	4,747	4.28%	338,019	361,360	6.9%	377,699	4.5%
Township	China	3,340	26.32%	214,228	253,258	18.2%	262,339	3.6%
Township	Clay	9,822	10.83%	723,237	782,623	8.2%	811,259	3.7%
Township	Clyde	5,523	9.32%	371,091	400,778	8.0%	432,840	8.0%
Township	Columbus	4,615	42.66%	240,748	341,760	42.0%	358,229	4.8%
Township	Cottrellville	3,814	15.54%	242,141	283,129	16.9%	296,836	4.8%
Township	East China	3,630	12.87%	289,633	304,309	5.1%	311,965	2.5%
Township	Emmett	2,255	48.45%	115,123	172,849	50.1%	179,760	4.0%
Township	Fort Gratiot	10,691	19.21%	709,846	832,545	17.3%	866,551	4.1%
Township	Grant	1,667	37.77%	102,866	139,550	35.7%	144,604	3.6%
Township	Greenwood	1,373	32.40%	81,576	102,495	25.6%	106,002	3.4%
Township	Ira	6,966	24.68%	445,246	564,569	26.8%	591,002	4.7%
Township	Kenockee	2,423	30.69%	144,586	190,623	31.8%	198,839	4.3%
Township	Kimball	8,628	19.06%	535,560	665,285	24.2%	694,569	4.4%
Township	Lynn	1,187	28.88%	70,359	91,078	29.4%	95,184	4.5%
Township	Mussey	1,965	28.43%	118,221	147,161	24.5%	153,207	4.1%
Township	Port Huron	8,615	13.04%	650,335	734,388	12.9%	757,451	3.1%
Township	Riley	3,046	41.41%	158,193	224,447	41.9%	234,724	4.6%
Township	St Clair	6,423	39.21%	338,202	468,095	38.4%	490,670	4.8%
Township	Wales	2,986	30.17%	168,534	222,449	32.0%	232,760	4.6%
City	Algonac	4,613	1.36%	509,532	539,522	5.9%	551,807	2.3%
City	Marine City	4,652	2.11%	636,950	645,973	1.4%	649,853	0.6%
City	Marysville	9,684	13.73%	1,396,079	1,372,448	-1.7%	1,364,135	-0.6%
City	Memphis							
City	Port Huron	32,229	-4.09%	5,162,120	5,197,763	0.7%	5,250,354	1.0%
City	Richmond							
City	St Clair	5,802	13.41%	625,076	652,620	4.4%	660,187	1.2%
City	Yale	2,063	4.35%	219,505	237,065	8.0%	256,030	8.0%
Village	Capac	1,775	12.13%	233,562	275,230	17.8%	279,206	1.4%
Village	Emmett	251	-15.49%	27,070	26,384	-2.5%	25,198	-4.5%
St Joseph County		62,338	5.95%	1,397,532	1,478,486	5.8%	1,466,617	-0.8%
Township	Burr Oak	1,942	16.99%	124,021	148,519	19.8%	155,149	4.5%
Township	Colon	2,178	9.28%	152,759	164,980	8.0%	173,495	5.2%
Township	Constantine	2,086	-1.60%	162,004	158,334	-2.3%	164,640	4.0%

GENERAL REVENUE SHARING PAYMENTS TO LOCAL UNITS

APPENDIX B

Local Unit		2000		FY 1999-2000	FY 2000-01 Year-to-Date		FY 2001-02 Year-to-Date	
Type	Name	Population	% Change	Enacted Final	Enacted Final	% Change	Enacted Estimate	% Change
Township	Fabius	3,285	4.75%	223,183	236,402	5.9%	247,703	4.8%
Township	Fawn River	1,648	4.90%	112,569	121,575	8.0%	131,301	8.0%
Township	Florence	1,436	-5.40%	112,532	110,962	-1.4%	116,108	4.6%
Township	Flowerfield	1,592	12.27%	104,657	121,289	15.9%	126,909	4.6%
Township	Leonidas	1,239	5.81%	92,108	99,477	8.0%	105,280	5.8%
Township	Lockport	3,701	13.88%	240,966	284,686	18.1%	298,286	4.8%
Township	Mendon	1,858	4.68%	145,476	150,895	3.7%	156,355	3.6%
Township	Mottville	1,499	-0.13%	111,377	113,408	1.8%	118,220	4.2%
Township	Nottawa	2,533	11.78%	177,524	196,363	10.6%	204,294	4.0%
Township	Park	2,699	-2.53%	216,307	212,522	-1.7%	220,570	3.8%
Township	Sherman	3,248	9.07%	216,388	233,699	8.0%	252,395	8.0%
Township	Sturgis	2,403	22.29%	140,233	177,405	26.5%	186,711	5.2%
Township	White Pigeon	2,220	9.79%	152,507	164,133	7.6%	170,864	4.1%
City	Sturgis	11,285	11.40%	1,174,151	1,307,961	11.4%	1,352,244	3.4%
City	Three Rivers	7,328	-1.82%	1,173,146	1,178,135	0.4%	1,181,548	0.3%
Village	Burr Oak	797	-9.64%	117,497	123,568	5.2%	125,381	1.5%
Village	Centreville	1,495	3.82%	163,845	176,953	8.0%	191,109	8.0%
Village	Colon	1,227	0.25%	140,578	148,620	5.7%	151,654	2.0%
Village	Constantine	2,095	3.10%	275,776	278,382	0.9%	279,240	0.3%
Village	Mendon	917	-0.33%	94,620	98,605	4.2%	101,745	3.2%
Village	White Pigeon	1,627	-0.31%	181,985	196,544	8.0%	202,017	2.8%
Sanilac County		44,504	11.52%	888,000	987,086	11.2%	978,613	-0.9%
Township	Argyle	770	-6.10%	66,582	65,238	-2.0%	68,081	4.4%
Township	Austin	673	5.32%	51,053	55,128	8.0%	57,498	4.3%
Township	Bridgehampton	768	11.95%	52,185	58,294	11.7%	60,920	4.5%
Township	Buel	1,237	46.56%	64,261	97,063	51.0%	101,169	4.2%
Township	Custer	1,036	1.77%	79,412	82,797	4.3%	86,497	4.5%
Township	Delaware	803	-0.62%	65,872	64,203	-2.5%	66,262	3.2%
Township	Elk	985	8.60%	73,363	78,483	7.0%	81,498	3.8%
Township	Elmer	790	2.07%	60,278	62,712	4.0%	65,084	3.8%
Township	Evergreen	995	9.70%	69,477	75,035	8.0%	81,038	8.0%
Township	Flynn	1,040	13.79%	69,797	82,604	18.3%	86,092	4.2%
Township	Forester	1,108	20.57%	66,670	79,332	19.0%	83,044	4.7%
Township	Fremont	913	16.01%	61,998	73,285	18.2%	76,488	4.4%
Township	Greenleaf	804	20.54%	52,414	62,687	19.6%	66,284	5.7%
Township	Lamotte	981	3.37%	76,590	81,554	6.5%	85,222	4.5%
Township	Lexington	2,584	14.90%	164,003	186,984	14.0%	195,594	4.6%
Township	Maple Valley	1,114	9.00%	78,726	85,024	8.0%	91,826	8.0%
Township	Marion	859	5.27%	63,648	65,785	3.4%	68,470	4.1%
Township	Marlette	2,051	7.38%	157,115	169,684	8.0%	177,128	4.4%
Township	Minden	391	-10.53%	35,192	34,301	-2.5%	32,679	-4.7%
Township	Moore	1,262	1.94%	104,060	111,262	6.9%	116,518	4.7%
Township	Sanilac	1,951	14.36%	125,559	141,698	12.9%	147,995	4.4%
Township	Speaker	1,248	21.99%	80,681	98,569	22.2%	102,576	4.1%
Township	Washington	990	18.42%	63,846	74,954	17.4%	78,212	4.3%
Township	Watertown	1,376	11.42%	98,548	111,963	13.6%	116,742	4.3%
Township	Wheatland	530	3.31%	40,910	41,921	2.5%	43,500	3.8%
Township	Worth	4,021	27.81%	230,400	294,204	27.7%	308,339	4.8%
City	Brown City	1,334	7.23%	173,569	187,455	8.0%	202,056	7.8%

GENERAL REVENUE SHARING PAYMENTS TO LOCAL UNITS

APPENDIX B

Local Unit		2000		FY 1999-2000	FY 2000-01 Year-to-Date		FY 2001-02 Year-to-Date	
Type	Name	Population	% Change	Enacted Final	Enacted Final	% Change	Enacted Estimate	% Change
City	Croswell	2,467	13.48%	320,163	375,553	17.3%	388,633	3.5%
City	Marlette	2,104	9.36%	267,556	288,960	8.0%	305,100	5.6%
City	Sandusky	2,702	13.48%	327,935	365,349	11.4%	371,888	1.8%
Village	Applegate	287	-3.37%	28,886	31,197	8.0%	33,447	7.2%
Village	Carsonville	502	-13.89%	76,864	78,500	2.1%	80,096	2.0%
Village	Deckerville	944	-7.00%	140,028	136,481	-2.5%	136,938	0.3%
Village	Forestville	127	-16.99%	15,043	14,662	-2.5%	13,923	-5.0%
Village	Lexington	1,104	41.72%	77,252	97,965	26.8%	100,691	2.8%
Village	Melvin	160	8.11%	12,938	13,973	8.0%	15,091	8.0%
Village	Minden City	242	3.86%	28,833	31,140	8.0%	33,631	8.0%
Village	Peck	599	7.35%	64,723	69,901	8.0%	75,493	8.0%
Village	Port Sanilac	658	0.30%	72,746	70,903	-2.5%	70,545	-0.5%
Schoolcraft County		8,792	5.97%	182,170	193,611	6.3%	191,938	-0.9%
Township	Doyle	630	2.27%	45,803	46,810	2.2%	48,859	4.4%
Township	Germfask	491	-9.41%	45,555	44,423	-2.5%	46,132	3.8%
Township	Hiawatha	1,328	3.83%	91,148	96,467	5.8%	101,151	4.9%
Township	Inwood	722	13.17%	48,772	54,889	12.5%	57,063	4.0%
Township	Manistique	1,053	14.96%	68,405	80,116	17.1%	83,692	4.5%
Township	Mueller	245	18.93%	16,471	18,664	13.3%	19,326	3.5%
Township	Seney	180	-2.70%	13,816	13,466	-2.5%	13,991	3.9%
Township	Thompson	671	44.61%	34,407	48,846	42.0%	50,991	4.4%
City	Manistique	3,472	0.61%	498,430	538,304	8.0%	558,240	3.7%
Shiawassee County		71,606	2.71%	1,506,074	1,557,148	3.4%	1,543,514	-0.9%
Township	Antrim	2,050	22.10%	128,151	159,051	24.1%	166,810	4.9%
Township	Bennington	3,017	10.67%	219,637	248,594	13.2%	258,740	4.1%
Township	Burns	2,905	18.77%	186,325	226,404	21.5%	236,301	4.4%
Township	Caledonia	4,427	-1.93%	336,274	336,720	0.1%	352,490	4.7%
Township	Fairfield	745	-5.70%	64,097	62,473	-2.5%	63,914	2.3%
Township	Hazelton	1,603	-5.59%	132,214	128,865	-2.5%	130,842	1.5%
Township	Middlebury	1,489	-3.06%	118,017	119,700	1.4%	125,399	4.8%
Township	New Haven	1,293	0.54%	105,196	106,943	1.7%	110,730	3.5%
Township	Owosso	4,670	13.32%	346,660	395,196	14.0%	410,245	3.8%
Township	Perry	3,556	17.83%	234,673	285,431	21.6%	297,762	4.3%
Township	Rush	1,409	0.28%	114,622	118,311	3.2%	123,448	4.3%
Township	Sciota	1,801	14.13%	120,939	143,226	18.4%	149,649	4.5%
Township	Shiawassee	2,291	7.46%	163,235	176,294	8.0%	187,843	6.6%
Township	Venice	2,156	-8.72%	175,121	170,685	-2.5%	172,266	0.9%
Township	Vernon	4,133	1.40%	318,974	332,188	4.1%	347,117	4.5%
Township	Woodhull	3,850	7.39%	273,198	295,054	8.0%	312,452	5.9%
City	Corunna	3,300	8.70%	390,633	421,884	8.0%	455,635	8.0%
City	Durand	3,933	-8.17%	644,744	662,116	2.7%	671,083	1.4%
City	Laingsburg	1,223	6.53%	145,942	157,617	8.0%	170,226	8.0%
City	Owosso	15,713	-3.73%	2,013,876	2,174,986	8.0%	2,253,994	3.6%
City	Perry	2,065	-6.69%	257,368	267,909	4.1%	273,117	1.9%
Village	Bancroft	616	2.84%	65,224	70,442	8.0%	76,077	8.0%
Village	Byron	595	3.84%	62,466	67,463	8.0%	72,860	8.0%
Village	Lennon	517	-3.18%	54,004	56,334	4.3%	58,312	3.5%
Village	Morrice	882	40.00%	70,520	109,826	55.7%	114,173	4.0%

GENERAL REVENUE SHARING PAYMENTS TO LOCAL UNITS

APPENDIX B

Local Unit		2000		FY 1999-2000	FY 2000-01 Year-to-Date		FY 2001-02 Year-to-Date	
Type	Name	Population	% Change	Enacted Final	Enacted Final	% Change	Enacted Estimate	% Change
Village	New Lothrop	603	1.17%	61,693	66,628	8.0%	70,544	5.9%
Village	Ovid				<i>Split Unit: See Ovid in Clinton County</i>			
Village	Vernon	847	-7.23%	102,412	106,992	4.5%	110,149	3.0%
Tuscola County		58,000	5.18%	1,172,447	1,239,914	5.8%	1,228,870	-0.9%
Township	Akron	1,297	-3.64%	111,327	108,507	-2.5%	109,959	1.3%
Township	Almer	2,276	10.38%	163,993	179,665	9.6%	186,959	4.1%
Township	Arbela	3,219	1.16%	267,129	288,499	8.0%	301,604	4.5%
Township	Columbia	814	2.65%	65,070	65,309	0.4%	67,593	3.5%
Township	Dayton	1,869	12.05%	130,387	150,451	15.4%	157,182	4.5%
Township	Denmark	1,874	-0.37%	142,277	141,470	-0.6%	147,593	4.3%
Township	Elkland	1,019	-11.70%	94,311	91,922	-2.5%	87,291	-5.0%
Township	Ellington	1,304	7.33%	104,573	112,939	8.0%	121,974	8.0%
Township	Elmwood	824	-10.73%	79,394	77,383	-2.5%	73,484	-5.0%
Township	Fairgrove	953	-2.95%	79,161	77,156	-2.5%	78,753	2.1%
Township	Fremont	2,504	16.85%	162,740	194,758	19.7%	203,334	4.4%
Township	Gilford	833	1.09%	65,588	65,434	-0.2%	67,911	3.8%
Township	Indianfields	2,774	-4.05%	237,101	231,095	-2.5%	232,996	0.8%
Township	Juniata	1,673	0.42%	139,868	147,090	5.2%	153,206	4.2%
Township	Kingston	1,226	9.27%	84,986	91,785	8.0%	99,128	8.0%
Township	Koylton	1,518	9.76%	106,090	114,577	8.0%	123,743	8.0%
Township	Millington	3,322	7.68%	236,540	255,463	8.0%	270,844	6.0%
Township	Novesta	1,603	9.49%	118,092	127,539	8.0%	137,742	8.0%
Township	Tuscola	2,152	0.37%	170,275	173,888	2.1%	181,577	4.4%
Township	Vassar	4,356	12.67%	302,966	366,847	21.1%	384,592	4.8%
Township	Watertown	2,231	4.64%	161,337	174,244	8.0%	187,512	7.6%
Township	Wells	1,946	27.36%	117,158	162,071	38.3%	170,063	4.9%
Township	Wisner	749	-5.79%	66,209	64,532	-2.5%	65,741	1.9%
City	Vassar	2,823	10.32%	426,380	468,004	9.8%	474,267	1.3%
Village	Akron	461	9.50%	47,828	51,654	8.0%	55,786	8.0%
Village	Caro	4,099	2.02%	509,009	538,163	5.7%	549,790	2.2%
Village	Cass City	2,643	16.12%	310,461	339,631	9.4%	346,291	2.0%
Village	Fairgrove	627	3.98%	64,563	69,728	8.0%	75,306	8.0%
Village	Gagetown	389	15.43%	44,072	55,595	26.1%	57,464	3.4%
Village	Kingston	450	2.51%	55,279	59,701	8.0%	64,477	8.0%
Village	Mayville	1,055	0.67%	129,331	139,677	8.0%	147,803	5.8%
Village	Millington	1,137	2.06%	131,931	142,485	8.0%	150,084	5.3%
Village	Reese	1,375	-7.59%	165,744	169,938	2.5%	175,283	3.1%
Village	Unionville	605	2.54%	69,531	75,093	8.0%	81,100	8.0%
Van Buren County		76,208	8.85%	1,526,633	1,663,262	8.9%	1,648,752	-0.9%
Township	Almena	4,226	18.01%	277,860	333,213	19.9%	347,048	4.2%
Township	Antwerp	6,327	25.56%	394,713	484,821	22.8%	504,686	4.1%
Township	Arlington	2,075	7.57%	163,314	176,379	8.0%	190,489	8.0%
Township	Bangor	2,121	8.88%	177,049	191,213	8.0%	205,912	7.7%
Township	Bloomington	2,836	20.63%	201,851	246,879	22.3%	256,048	3.7%
Township	Columbia	2,479	5.99%	203,370	219,640	8.0%	233,994	6.5%
Township	Covert	3,141	10.02%	242,788	253,860	4.6%	261,756	3.1%
Township	Decatur	2,078	11.96%	156,759	171,035	9.1%	177,175	3.6%
Township	Geneva	3,975	25.71%	268,091	374,327	39.6%	392,972	5.0%

GENERAL REVENUE SHARING PAYMENTS TO LOCAL UNITS

APPENDIX B

Local Unit		2000		FY 1999-2000	FY 2000-01 Year-to-Date		FY 2001-02 Year-to-Date	
Type	Name	Population	% Change	Enacted Final	Enacted Final	% Change	Enacted Estimate	% Change
Township	Hamilton	1,797	18.61%	128,571	155,799	21.2%	161,947	3.9%
Township	Hartford	3,159	11.15%	236,723	283,070	19.6%	296,080	4.6%
Township	Keeler	2,601	10.96%	184,828	202,455	9.5%	210,757	4.1%
Township	Lawrence	2,282	7.90%	182,433	191,468	5.0%	197,719	3.3%
Township	Paw Paw	3,819	4.77%	289,911	297,362	2.6%	308,298	3.7%
Township	Pine Grove	2,773	6.90%	237,341	256,328	8.0%	269,094	5.0%
Township	Porter	2,406	15.34%	168,530	189,617	12.5%	196,829	3.8%
Township	South Haven	4,046	-3.32%	387,023	384,016	-0.8%	394,821	2.8%
Township	Waverly	2,467	12.75%	188,544	224,202	18.9%	232,854	3.9%
City	Bangor	1,933	0.57%	302,290	326,473	8.0%	345,476	5.8%
City	Gobles	815	5.98%	108,172	116,826	8.0%	126,172	8.0%
City	Hartford	2,476	-2.17%	345,388	373,019	8.0%	402,861	8.0%
City	South Haven	5,021	-9.74%	705,319	687,452	-2.5%	652,816	-5.0%
Village	Bloomington	528	4.97%	61,527	66,449	8.0%	71,765	8.0%
Village	Breedsville	235	10.33%	20,503	27,186	32.6%	28,548	5.0%
Village	Decatur	1,838	4.43%	211,417	228,330	8.0%	246,596	8.0%
Village	Lawrence	1,059	15.74%	117,037	149,401	27.7%	154,446	3.4%
Village	Lawton	1,859	10.33%	220,261	251,427	14.1%	255,452	1.6%
Village	Mattawan	2,536	3.26%	207,285	223,868	8.0%	237,450	6.1%
Village	Paw Paw	3,308	5.92%	398,735	430,634	8.0%	440,068	2.2%

GENERAL REVENUE SHARING PAYMENTS TO LOCAL UNITS

APPENDIX B

Local Unit		2000		FY 1999-2000	FY 2000-01 Year-to-Date		FY 2001-02 Year-to-Date	
Type	Name	Population	% Change	Enacted Final	Enacted Final	% Change	Enacted Estimate	% Change
Washtenaw County		321,171	14.25%	6,218,033	7,068,541	13.7%	7,007,388	-0.9%
Township	Ann Arbor	4,385	26.59%	294,411	345,732	17.4%	356,925	3.2%
Township	Augusta	4,813	9.01%	355,261	383,682	8.0%	399,859	4.2%
Township	Bridgewater	1,646	26.23%	100,301	123,689	23.3%	128,794	4.1%
Township	Dexter	5,248	19.08%	327,154	387,113	18.3%	404,394	4.5%
Township	Freedom	1,562	5.11%	109,692	114,577	4.5%	119,558	4.3%
Township	Lima	2,517	18.06%	157,773	182,730	15.8%	190,694	4.4%
Township	Lodi	5,710	46.34%	304,086	426,542	40.3%	444,302	4.2%
Township	Lyndon	2,547	24.12%	150,265	185,418	23.4%	193,996	4.6%
Township	Manchester	1,942	11.67%	135,630	146,377	7.9%	152,030	3.9%
Township	Northfield	8,252	22.58%	638,155	730,713	14.5%	749,584	2.6%
Township	Pittsfield	29,501	72.29%	1,598,606	2,527,786	58.1%	2,621,160	3.7%
Township	Salem	5,562	48.96%	273,467	400,031	46.3%	418,758	4.7%
Township	Saline	1,302	2.04%	98,340	99,251	0.9%	103,212	4.0%
Township	Scio	13,421	40.27%	764,759	1,015,688	32.8%	1,055,373	3.9%
Township	Sharon	1,678	22.84%	100,532	122,385	21.7%	127,998	4.6%
Township	Superior	10,740	23.17%	756,432	923,119	22.0%	958,286	3.8%
Township	Sylvan	2,734	9.01%	189,977	200,516	5.5%	208,494	4.0%
Township	Webster	5,198	60.68%	242,309	378,257	56.1%	394,875	4.4%
Township	York	6,547	24.99%	394,982	488,801	23.8%	509,909	4.3%
Township	Ypsilanti	49,182	8.55%	4,954,234	5,350,573	8.0%	5,667,815	5.9%
City	Ann Arbor	113,992	4.13%	13,887,212	14,085,163	1.4%	14,244,233	1.1%
City	Milan	4,775	18.19%	541,315	561,718	3.8%	565,093	0.6%
City	Saline	8,034	20.58%	984,760	1,017,094	3.3%	1,017,531	0.0%
City	Ypsilanti	22,362	-10.00%	3,876,894	3,970,348	2.4%	4,029,893	1.5%
Village	Barton Hills	335	0.30%	32,678	31,850	-2.5%	31,700	-0.5%
Village	Chelsea	4,398	16.60%	548,997	550,945	0.4%	550,138	-0.1%
Village	Dexter	2,338	56.18%	186,126	233,951	25.7%	237,387	1.5%
Village	Manchester	2,160	23.22%	248,585	259,966	4.6%	260,690	0.3%
Wayne County		2,057,519	-2.45%	53,860,626	53,240,730	-1.2%	52,848,960	-0.7%
Township	Brownstown	22,989	22.21%	2,654,755	2,979,133	12.2%	2,946,433	-1.1%
Township	Canton	76,366	33.88%	5,663,421	7,216,232	27.4%	7,443,182	3.1%
Township	Grosse Ile	10,894	11.38%	1,043,839	1,104,311	5.8%	1,125,180	1.9%
Township	Grosse Pointe	0	0.00%	46	45	-2.2%	43	-5.0%
Township	Huron	13,737	31.49%	936,219	1,224,688	30.8%	1,274,868	4.1%
Township	Northville	20,372	23.38%	1,434,872	1,741,581	21.4%	1,803,485	3.6%
Township	Plymouth	27,419	17.06%	2,303,563	2,579,804	12.0%	2,648,435	2.7%
Township	Redford	51,622	-5.08%	7,285,850	7,184,806	-1.4%	7,304,124	1.7%
Township	Sumpter	11,856	8.86%	945,969	1,021,647	8.0%	1,103,379	8.0%
Township	Vanburen	23,559	12.13%	2,274,820	2,492,149	9.6%	2,516,502	1.0%
City	Allen Park	29,376	-4.89%	3,791,853	3,695,798	-2.5%	3,611,946	-2.3%
City	Belleville	3,997	22.23%	394,951	474,334	20.1%	486,260	2.5%
City	Dearborn	97,775	9.51%	11,934,535	12,282,754	2.9%	12,390,177	0.9%
City	Dearborn Heights	58,264	-4.23%	7,080,723	7,266,172	2.6%	7,445,921	2.5%
City	Detroit	949,238	-7.57%	333,900,000	333,900,000	0.0%	333,900,000	0.0%
City	Ecorse	11,229	-7.81%	2,764,686	2,694,651	-2.5%	2,558,884	-5.0%
City	Flat Rock	8,488	16.43%	997,609	1,038,972	4.1%	1,029,108	-0.9%
City	Garden	30,047	-5.65%	3,921,989	4,060,167	3.5%	4,165,808	2.6%
City	Gibraltar	4,264	-0.77%	575,348	560,773	-2.5%	545,086	-2.8%

Fourth Floor, North Tower, Anderson Building
124 North Capitol Avenue, Lansing, Michigan 48933

Mail to: P. O. Box 30014
Lansing, Michigan 48909-7514

Phone: 517-373-8080 FAX: 517-373-5874
www.house.state.mi.us/hfa



Mitchell E. Bean, Director
Bill Fairgrieve, Deputy Director

COMMUNITY HEALTH Bill Fairgrieve, Deputy Director

Medicaid Bill Fairgrieve, Senior Analyst
Mental Health–Substance Abuse Margaret Alston, Senior Analyst
Public Health–Aging Susan Frey, Senior Analyst

EDUCATION AND HUMAN SERVICES Hank Prince, Associate Director

Higher Education Hank Prince, Senior Analyst
Career Development–Consumer and Industry Services Robert Schneider, Senior Analyst
Community Colleges–Department of Education Caven West, Fiscal Analyst
Family Independence Agency
Administration–Grants–Staffing Myron Freeman, Senior Analyst
Child and Family Services–Juvenile Justice Erin Black, Fiscal Analyst
Michigan Strategic Fund Steve Stauff, Senior Analyst
School Aid Mary Ann Cleary, Senior Analyst; Laurie Cummings, Fiscal Analyst
Transportation William E. Hamilton, Senior Analyst

GENERAL GOVERNMENT Al Valenzio, Associate Director

Capital Outlay–Retirement–Supplementals Al Valenzio, Senior Analyst
Agriculture–Judiciary–Legislative Transfers Tim Aben, Senior Analyst
Attorney General–Auditor General–Civil Rights–Executive Office–
Legislature–Library of Michigan–Management and Budget Robin Risko, Senior Analyst
Civil Service–Lottery–State–Treasury Steve Stauff, Senior Analyst
Corrections–Bill Analysis Marilyn Peterson, Senior Analyst
Environmental Quality–Federal Funds Monitoring–Natural Resources–
Natural Resources Trust Fund–Clean Michigan Initiative– Kirk Lindquist, Senior Analyst
Military and Veterans Affairs–State Police Kyle I. Jen, Fiscal Analyst

ECONOMIC AND REVENUE FORECAST–TAX ANALYSIS Rebecca Ross, Senior Economist

Jim Stansell, Economist

FISCAL OVERSIGHT, AUDIT AND LITIGATION Myron Freeman, Senior Analyst

MANAGEMENT SUPPORT STAFF

Office Manager Sharon Risko, Administrative Assistant
Publications and Data Jeanne Dee, Administrative Assistant
Community Health–Corrections–Family Independence Agency–HFA Library Tumai Burris, Budget Assistant
Community Colleges–Education–Consumer and Industry Services–Higher Education–
Career Development–Michigan Strategic Fund–School Aid–Transportation–
HFA Internet Barb Endres, Budget Assistant
Capital Outlay–Environmental Quality–Natural Resources–Retirement–
Supplementals–Bill Analysis–Daily Calendar–Revenue and Tax Analysis Stephanie Rogers, Budget Assistant
Agriculture–General Government–Public Safety–Judiciary–Transfers Julie Stapelman, Budget Assistant
Facilities Coordinator Tina Gee, Receptionist

January 2001



Additional copies of this report can be obtained from:

House Fiscal Agency
P.O. Box 30014
Lansing, MI 48909-7514
(517) 373-8080
FAX (517) 373-5874
www.house.state.mi.us/hfa